

上海精众新材料科技有限公司
**SHANGHAI JONZOO
NEW MATERIAL
TECHNOLOGY
CO.,LTD**

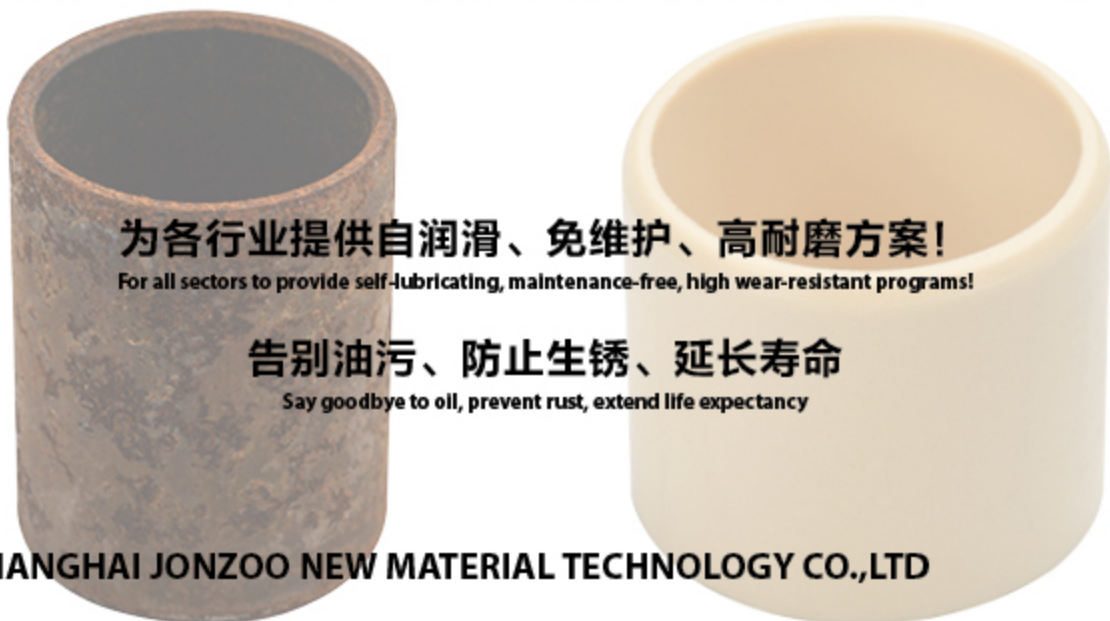


公司简介 Company Profile

上海精众新材料科技有限公司

上海精众新材料科技有限公司是一家专注于高性能工程塑料的改性研究、生产、应用以及推广的高新技术型企业，现已开发出 HPP 系列工程塑料轴承和工程塑料棒材板材、XW 系列纤维缠绕轴承、GB 系列关节轴承、直线滑动轴承和导轨、丝杠螺母及直线运动模组等几大系列产品。

我们将在各种轴承材料的选择、性能测试、应用等方面为各行业客户提供专业的免维护、高耐磨方案服务，使您解决问题并降低成本。我们的工程师将随时为您服务，期待与您的沟通与合作。



为各行业提供自润滑、免维护、高耐磨方案！

For all sectors to provide self-lubricating, maintenance-free, high wear-resistant programs!

告别油污、防止生锈、延长寿命

Say goodbye to oil, prevent rust, extend life expectancy

SHANGHAI JONZOO NEW MATERIAL TECHNOLOGY CO.,LTD

Shanghai Jonzoo New Materials Technology Co., Ltd. is a high-tech enterprise specializing in the modification research, production, application and promotion of high-performance engineering plastics. Now it has developed HPP series engineering plastic bearings and engineering plastic bar plates, XW series Fiber winding bearings, GB Plastic spherical bearings, maintenance-free linear plain bearings and rails, self-Run Slide screw nut and linear motion modules, and other major products.

We will be in a variety of bearing material selection, performance testing, applications and other aspects of the industry for the provision of professional services to customers, allowing you to solve problems and reduce costs. Our engineers will be at your service, looking forward to your communication and cooperation.

目录 Directory

HPP 工程塑料轴套 Plastic plain bearings

P 5-36



XW 系列纤维缠绕轴承 Filament-wound bearings

P 37-38



工程塑料定制产品 Engineering plastics custom products

P 39-41



目录 Directory

工程塑料棒材和板材 Engineering plastic bars and plates

P 42-42



GB 系列关节轴承 Plastic spherical bearings

P 43-45



陶瓷轴承和塑料滚动轴承 Ceramic bearings and plastic roller bearings

P 46-47



直线滑动轴承和轴端支撑 Linear plain bearings and shaft ends

P 48-55



目录 Directory



LPM-05



LPME-05



LPM-06



LPM-06K



LPME-06K



LPME-05L



LPMM-01



LPMM-01K



LPMM-01L



LPMM-01KL



LPMM-01S



LSH



LSHF



LPP

直线导轨和滑块 Linear guide and slider

P 56-57



LAS



SLR



LD



LDP



LDS



LDPS



LN



LNB-01



LNB-02



LNB-03



LNB-04

丝杠和螺母 Screw and nut

P 58-59



SG



SGK



N-R/L



N-R/L



N-R/L

直线运动模组 Linear motion module

P 60-61



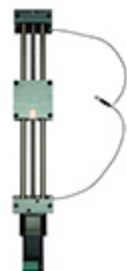
SLT



SLT-PL



LLD



SLT-E



LLD-E

HPP 工程塑料轴承 Plastic plain bearings

一般性能 Common Capability	试验方法 Testing Method	单位 Unit	HPP0	HPP1	HPP2	HPP3	HPP4	HPP5
密度 Density	ISO 1183	g/cm ³	1.46	1.46	1.15	1.48	1.25	1.44
颜色 Color			深灰 DarkGrey	深灰 DarkGrey	深灰 Dark Grey	黄色 Yellow	米黄色 Cream	黑色 Black
对钢的动摩擦系数 Dynamic friction /steel(dry)			0.05-0.15	0.08-0.18	0.09-0.30	0.05-0.15	0.09-0.20	0.09-0.25
最大 P.V 值 Max. PV (dry)		N/mm ² × m/s	0.4	0.5	0.2	0.4	0.5	1.5
最大旋转速度值 Max. rotating velocity		m/s	1.0	1.0	0.8	1.5	1.0	1.5
最大摇摆速度值 Max. oscillating velocity		m/s	0.7	0.7	0.6	1.1	0.7	1.1
最大直线速度值 Max. linear velocity		m/s	3.0	4.0	2.5	8.0	4.0	5.0
抗拉强度 Tensile strength	ISO 527	MPa	80	200	110	75	120	170
抗压强度 (轴向) Compressive strength(Axial)		MPa	65	80	50	60	60	100
弹性模量 E-module	ISO 527	MPa	2300	7700	2500	2400	3500	7900
允许最大表面静压力 Max. static pressure of the surface, 20°C		MPa	35	80	20	35	60	150
邵氏硬度 Shore hardness	ISO 868	D	75	81	79	74	77	85
连续工作温度 Continuous work temperature		°C	-40/+80	-40/+130	-40/+80	-50/+90	-40/+100	-100/+250
短时运行温度 Short-time work temperature		°C	-40/+120	-40/+220	-40/+170	-50/+120	-40/+180	-100/+315
导热性 Thermal conductivity	ASTME1461	W/ m × k	0.2	0.6	0.25	0.25	0.2	0.6
线性热膨胀系数 Linear coef. of thermal expansion	ASTMD696	K ⁻¹ × 10 ⁻⁵	10	4	10	9	9	5
RH50/23°C时的吸湿性 Moisture absorption RHS0/23°C	ASTMD570	%	0.2	0.1	1.4	0.2	1.3	0.1
最大吸水率 23°C Max. water absorption, 23°C		%	1.2	0.3	7.6	1.2	6.5	0.5
燃烧性能 Flammability	UL94		HB	HB	HB	HB	HB	V0
体电阻率 Volume resistivity	IEC60093	Ω cm	>10 ¹²	>10 ¹³	>10 ¹²	>10 ¹³	>10 ¹²	>10 ⁸
面电阻率 Surface resistivity	IEC60093	Ω cm	>10 ¹⁵	>10 ¹¹	>10 ¹¹	>10 ¹²	>10 ¹²	>10 ⁷

HPP 工程塑料轴承 Plastic plain bearings

HPP6	HPP7	HPP8	HPP9	HPP10	HPP11	HPP12	HPP13	HPP14	HPP15	HPP16
1.40	1.70	1.53	3.9	1.79	1.60	1.48	1.46	1.24	1.40	1.58
棕色 Brown	黑色 Black	浅黄色 Buff	深绿色 Dark Green	棕色 Brown	灰色 Grey	黑色 Black	深黄色 Dark Yellow	黑色 Black	黑色 Black	黑色 Black
0.05-0.15	0.07-0.20	0.05-0.20	0.15-0.30	0.08-0.25	0.07-0.18	0.05-0.20	0.15-0.35	0.10-0.40	0.10-0.25	0.06-0.20
1.0	1.4	0.80	0.7	0.7	0.8	0.6	0.70	0.3	1.8	0.4
1.5	1.0	2.00	3.0	1.0	1.2	1.0	1.00	0.8	1.5	1.0
1.1	0.7	1.00	2.1	0.7	0.8	0.7	0.70	0.6	1.1	0.7
5.0	3.0	5.00	5.0	2.0	4.0	5.0	4.00	3.0	5.0	3.0
90	180	55	16	210	135	115	240	250	240	120
65	80	78	20	110	80	95	130	100	105	65
2500	12000	2800	950	10000	11000	4300	9000	11000	12000	5300
150	90	80	20	110	75	100	120	105	160	50
81	87	77	68	80	82	83	80	84	86	76
-100/+250	-40/+200	-40/+200	200/+260	40/+200	40/+200	-40/+130	-40/+150	40/+130	-100/+260	-40/+130
-100/+310	-40/+260	-40/+240	200/+310	40/+240	40/+260	-40/+170	-40/+220	40/+180	-100/+315	-40/+200
0.6	0.6	0.5	0.45	0.24	0.5	0.25	0.24	0.6	0.7	0.25
4	4	5	12	5	5	5	8	11	2	4
0.3	0.1	0.1	<0.1	0.1	<0.1	0.9	1.1	1.8	0.1	0.2
1.1	0.3	0.3	<0.1	0.2	<0.1	4.9	4.6	8.4	0.5	0.4
V0	HB	V0	V0	V0	V0	HB	HB	HB	V0	HB
>10 ¹¹	>10 ⁴	>10 ¹⁵	>10 ¹²	>10 ¹³	>10 ⁵	>10 ¹⁵	>10 ¹²	>10 ³	>10 ⁵	>10 ¹⁵
>10 ¹¹	>10 ⁵	>10 ¹²	>10 ¹²	>10 ¹²	>10 ⁵	>10 ¹²	>10 ¹¹	>10 ³	>10 ⁵	>10 ¹²

HPP 工程塑料轴承 Plastic plain bearings

一般性能 Common Capability	试验方法 Testing Method	单位 Unit	HPP17	HPP18	HPP19	HPP20	HPP21	HPP22
密度 Density	ISO1183	g/cm ³	1.45	1.14	1.42	1.28	1.52	1.44
颜色 Color			黄色 Yellow	白色 White	蓝色 Blue	米色 Beige	黑色 Black	黄色 Yellow
对钢的动摩擦系数 Dynamic friction /steel(dry)			0.05-0.18	0.10-0.40	0.10-0.20	0.25-0.40	0.15-0.35	0.08-0.20
最大 P.V 值 Max. PV (dry)		N/mm ² × m/s	0.4	0.1	0.4	0.28	0.15	0.45
最大旋转速度值 Max. rotating velocity		m/s	1.2	0.6	1.0	0.6	0.5	1.30
最大摇摆速度值 Max. oscillating velocity		m/s	0.8	0.4	0.8	0.4	0.4	1.00
最大直线速度值 Max. linear velocity		m/s	3.0	1.0	2.5	1.0	2.0	4.00
抗拉强度 Tensile strength	ISO 527	MPa	90	83	110	140	90	55
抗压强度 (轴向) Compressive strength(Axial)		MPa	70	50	78	118	70	60
弹性模量 E-module	ISO 527	MPa	2500	2800	2000	3600	9500	2200
允许最大表面静压力 Max. static pressure of the surface, 20°C		MPa	50	20	60	120	40	60
邵氏硬度 Shore hardness	ISO 868	D	75	76	76	83	78	80
连续工作温度 Continuous work temperature		°C	-50/+110	40/+80	100/+180	-100/+250	50/+90	-100/+180
短时运行温度 Short-time work temperature		°C	-50/+170	40/+170	100/+210	-100/+315	50/+110	-100/+210
导热性 Thermal conductivity	ASTME1461	W/ m × k	0.3	0.2	0.24	0.24	0.6	0.24
线性热膨胀系数 Linear coef. of thermal expansion	ASTMD696	K ⁻¹ × 10 ⁻⁵	8	10	8	9	6	7
RH50/23℃时的吸湿性 Moisture absorption RHS0/23°C	ASTMD570	%	0.2	1.5	0.6	0.3	0.2	0.3
最大吸水率 23℃ Max. water absorption, 23°C		%	0.5	7.6	1.9	0.5	0.8	1.6
燃烧性能 Flammability	UL94		HB	V0	V0	V0	HB	HB
体电阻率 Volume resistivity	IEC60093	Ω cm	>10 ¹³	>10 ¹²	>10 ¹¹	>10 ¹⁴	>10 ⁵	>10 ¹³
面电阻率 Surface resistivity	IEC60093	Ω cm	>10 ¹²	>10 ¹⁵	>10 ¹¹	>10 ¹³	>10 ⁵	>10 ¹⁰

HPP 工程塑料轴承 Plastic plain bearings

HPP23	HPP24	HPP25	HPP26	HPP27	HPP28	HPP29	HPP30	HPP31	HPP32	HPP33	HPP34
1.37	1.51	1.45	1.45	2.02	1.35	1.32	1.51	1.29	1.40	0.96	2.13
黑色 Black	米色 Beige	黑色 Black	白色 White	黄色 Yellow	黄色 Yellow	深灰 Dark Grey	红棕 Red Brown	橄榄绿 Olive	绿色 Green	白色 White	黑色 Black
0.05-0.15	0.15-0.20	0.05-0.20	0.05-0.18	0.05-0.15	0.05-0.15	0.05-0.20	0.08-0.20	0.07-0.20	0.05-0.25	0.05-0.15	0.08-0.18
0.3	0.5	0.3	0.3	0.4	0.9	0.7	0.6	0.5	0.3	0.2	0.3
0.8	1.0	0.8	1.0	5.0	1.5	1.2	1.0	1.0	1.2	0.5	2.0
0.6	0.7	0.6	0.7	3.5	1.1	0.8	0.7	0.7	0.8	0.4	1.4
3.5	1.0	2.5	3.0	7.0	8.0	4.0	3.0	3.0	3.0	1.0	5.0
190	47	75	75	18	130	100	80	80	75	45	13
75	105	60	65	10	70	60	75	75	60	35	8
7500	4500	2200	2300	830	4000	3500	2500	2400	2000	1000	790
75	45	30	30	10	70	60	70	50	25	30	8
78	74	74	74	67	77	77	77	75	74	70	65
-40/+100	-50/+200	-40/+80	-40/+80	200/+260	-40/+100	-40/+150	-50/+110	-50/+100	-40/+80	40/+70	-200/+260
-40/+200	-50/+250	-40/+120	-40/+120	200/+310	-40/+180	-40/+200	-50/+170	-50/+150	-40/+120	40/+100	-200/+310
0.25	0.24	0.2	0.2	0.25	0.25	0.25	0.3	0.25	0.25	0.3	0.25
11	3	10	10	13	7	5	8	10	11	12	12
1.3	<0.1	0.2	0.2	<0.1	1.3	1.3	0.2	0.2	0.2	<0.1	<0.1
5.5	0.2	1.2	1.1	<0.1	6.5	2.5	0.5	0.4	1.1	<0.1	<0.1
HB	V0	HB	HB	V0	HB	HB	HB	HB	HB	HB	V0
>10 ¹³	>10 ¹²	>10 ¹²	>10 ¹²	>10 ¹⁵	>10 ¹⁵	>10 ¹⁵	>10 ¹⁴	>10 ¹⁴	>10 ¹³	>10 ¹⁵	>10 ⁴
>10 ¹¹	>10 ¹²	>10 ¹⁵	>10 ¹⁵	>10 ¹⁵	>10 ¹⁵	>10 ¹⁵	>10 ¹⁵	>10 ¹⁵	>10 ¹²	>10 ¹⁵	>10 ³

HPP 工程塑料轴套 Plastic plain bearings

产品特性 Product Features:

免维护、不生锈、良好的化学抗性、耐灰尘和脏污、抗冲击和边缘载荷、高耐磨、可重载使用、摩擦系数小、耐高温、符合食品级、低吸水性 and 水下应用、可导电或绝缘。

Maintenance-free, rust-free, good chemical resistance, dust and dirt resistance, impact resistance, high wear resistance, low coefficient of friction, high temperature resistance, food grade, underwater applications.



HPP0 通用型轴承

HPP0 universal bearings



通用型最强
 连续使用温度: -40/+80°C
 对不同的轴材料磨损很小
 适合大部分中低载荷应用 ...

The most versatile plastic bearing
 Continuous temperature: -40/+80°C
 There is little wear and tear on different shaft materials
 Suitable for most low-load applications

HPP1 中高载荷轴承

HPP1 high load bearing



通用性强
 尺寸最全
 适合中高载荷
 连续工作温度: -40°C -130°C ...

Strong commonality
 The most complete size
 Suitable for medium-high load
 Continuous working temperature: -40 °C to 130 °C ...

HPP2 耐冲击轴承

HPP2 impact-resistant bearings



减震
 耐冲击
 低成本
 承受边缘载荷
 适合低速运动 ...

Shock absorption
 Impact resistance
 Low cost
 Load on the edge
 Suitable for slow motion...

HPP 工程塑料轴套 Plastic plain bearings

HPP3 高低速移动轴承

HPP3 high speed bearing



吸水性较低
适用于软轴
适用于快慢速
在不同轴材料上拥有较低的摩擦系数 ..

Low water absorption
Suitable for flexible shaft
Suitable for fast and slow speed
Have lower friction coefficient on non-coaxial material...

HPP4 马拉松型轴承

HPP4 marathon bearings



耐灰层
长使用寿命
在所有轴上都能达到低磨损 ...

Resistance to gray layer
Long service life
Low wear on all shafts...

HPP5 耐高温强化学抗性轴承

HPP5 high temperature resistant chemical resistance bearings



高化学抗性
高抗压强度
耐温 -100℃ ~+250℃
高温下保持较高的承载能力 ...

High chemical resistance
High compressive strength
Heat resistance - 100 °C to + 250 °C
High carrying capacity at high temperature...

HPP6 高动载荷轴承

HPP6 high dynamic load bearing



极高载荷
高线速度的应用
使用温度 -100℃ ~+250℃ ...

High load
Application of high line speed
Use temperature between 100 °C ~ + 100 °C ...

HPP 工程塑料轴套 Plastic plain bearings

HPP7-HPP9 和 HPP11 防水轴承

HPP7-HPP9 and HPP11 waterproof bearings



耐高温
水下应用
低吸湿性
好的化学抗性 ...

High temperature resistant
Underwater applications
Low moisture absorption
Good chemical resistance...

HPP9 硬轴高速运动轴承

HPP9 hard-axis high-speed motion bearings



高压密封要求
中等载荷和高速运动；
连续使用度：-200℃ -260℃ ...

High pressure seal requirement
Moderate load and high-speed movement;
Continuous use degrees: - 200 °C – 260 °C ...

HPP10 汽车行业轴承

HPP10 automotive industry bearings



高化学抗性
应用中使用燃料、油等
连续使用温度 -40℃ ~+200℃ ...

high chemical resistance
Application of fuel, oil, continuous use
temperature -40 °C ~ +200 °C ...

HPP12 高载荷轴承

HPP12 high load bearing



抗冲击性能强
适用于摆动应用
高负荷下，低成本方案
极限负载时有出色的耐磨性 ...

Strong impact resistance
Suitable for swing application
High load, low cost scheme
The extreme load has excellent wear
resistance...

HPP 工程塑料轴套 Plastic plain bearings

HPP13 极高载荷轴承

HPP13 very high load bearing



适用于摆动场合
极高载荷下极好的耐磨性 ...

Excellent wear resistance under extreme loads Suitable for swinging ...

HPP14 高载荷下导电轴承

HPP14 High-load conductive bearings



可导电
高抗压强度
良好的化学抗性 ...

Electrically conductive
High compressive strength
Good chemical resistance...

HPP15 高耐磨轴承

HPP15 high wear-resistant bearings



长寿命
高 PV 值
高温 250°C
高化学抗性和高载荷 ...

Long life
High PV value
The high temperature of 250 °C
High chemical resistance and high loading...

HPP16 低吸水性轴承

HPP16 low water absorption bearings



高强度
低吸水性
低磨损率
潮湿环境中可保持尺寸稳定性 ...

High strength
Low water absorption
Low wear rate
Maintain dimensional stability in humid environment...

HPP 工程塑料轴套 Plastic plain bearings

HPP17 多面手轴承

HPP17 multi-faceted bearings



低吸水性
适合高载荷运动
与软轴、硬轴配合有很好的耐
磨性 ...

Low water imbibition
Suitable for high load movement
Good wear resistance with soft shaft and
hard shaft...

HPP18 食品药品级轴承

HPP18 food grade drug bearing



符合 FDA 认证
耐温 -40°C -80°C
不含 PTFE 和 Silicon 材料 ...

FDA certification
Heat resistance to 40 °C to 80 °C
No PTFE and Silicon material...

HPP19 耐高温食品药品级轴承

HPP19 high temperature food grade drug bearing



高载荷下耐磨
符合 FDA 认证;
连续使用度: -100°C -180°C; ...

High load bearing down wear-resisting
FDA certification;
Continuous use degrees: - 100 °C -- 180
°C ;...

HPP20 耐高温食品药品级轴承

HPP20 high temperature food grade drug bearing



符合 FDA 认证;
较广泛的化学抗性;
连续使用度: -100°C -250°C ...

In line with FDA certification
More extensive chemical resistance;
Continuous use: -100 °C -250 °C ...

HPP 工程塑料轴套 Plastic plain bearings

HPP21 水下快速旋转运动轴承

HPP21 underwater rapid rotation motion bearing



水下应用;
 中低载荷;
 高速场合应用; ...

Underwater applications;
 Low load
 High-speed applications; ...

HPP22 耐高温多功能轴承

HPP22 high temperature multi-functional bearings



高温 180°C 下高耐磨材料;
 连续使用度: -100°C -180°C
 旋转运动耐磨性更好; ...

High temperature 180 °C high wear-resistant materials;
 Continuous use: -100 °C -180 °C
 Rotational wear better; ...

HPP23 低成本轴承

HPP23 low-cost bearings



低成本
 中等载荷的应用;
 大批量: -40°C -110°C ...

low cost
 Medium load applications;
 High-volume: -40 °C -110 °C ...

HPP24 高弹性轴承

HPP24 highly elastic bearings



高弹性
 耐磨性高
 高化学抗性
 适用于软轴
 最高使用温度 +200°C

High elastic
 High wear resistance
 High chemical resistance
 Suitable for flexible shaft
 The highest use temperature + 200 °C

HPP 工程塑料轴套 Plastic plain bearings

HPP25 低成本轴承

HPP25 low-cost bearings



低吸水性；
耐磨性良好；
摩擦系数小； ...

Low water absorption
Good wear resistance;
Small friction coefficient; ...

HPP26 低温耐磨轴承

HPP26 low temperature wear-resistant bearings



适用于软轴；
80 度下较好的耐磨材料；
连续使用度：-40℃ -80...

Suitable for flexible shaft;
80 degrees better wear-resistant materials;
Continuous use of degrees: -40 °C -80 °C ...

PP27 高速高温轴承

PP27 high-speed high-temperature bearings



中等载荷高速运动；
符合 FDA 标准的高速高温材料；
连续使用度：-200℃ -260℃ ...

Medium load high-speed movement;
Meet the FDA standard high-speed high-temperature materials;
continuous use of degrees: -200 °C -260 °C ...

PP28 极耐磨的轴承

PP28 extremely wear-resistant bearings



适用于软轴；
吸水性较低
对轴材料和粗糙度要求低；
连续使用度：-40℃ -100℃ ...

Suitable for flexible shaft
Low water absorption
Low shaft material and roughness requirements;
Continuous use of degrees: -40 °C -100 °C

HPP 工程塑料轴套 Plastic plain bearings

PP29 特殊高速高温轴承

PP29 special high-speed high-temperature bearings



适合高载摆动；
较高的抗压强度
连续使用度：-40℃-150℃； ...

Suitable for high load swing;
High compressive strength;
Continuous use of degrees: -40 °C -150 °C ...

HPP30 可被探测的轴承

HPP30 probable bearing



热传导性好；
金属粉末植入可被探测；
低吸水率和中高承载性能 ...

Good thermal conductivity;
Metal powder implantation can be detected;
Low water absorption and high bearing capacity; ...

HPP31 中低载荷应用轴承

HPP32 low-cost silicone sleeve



潮湿环境应用；
大批量，低成本
应用于中低载荷和速度 ...

Application of wet environment;
Large quantity, low cost
Applied to medium and low load and speed...

HPP32 含硅酮的低价轴套

HPP32 medium and low load bearing applications



低成本
不含 PTFE；
应用于中低载荷和速度； ...

low cost;
Free of PTFE
Applied to low load and speed; ...

HPP 工程塑料轴套 Plastic plain bearings

HPP33 不含硅和氟的轴套

HPP33 A sleeve that contains no silicon and fluorine



符合 FDA
不含硅和氟，
适合低速运行，低噪声；
连续使用温度 -40℃ +70℃ ...

Comply with the FDA
Without silicon and fluorine,
Suitable for low speed operation and low noise;
Continuous use to 40 °C to + 70 °C temperature...

HPP34 高速低成本轴套

HPP34 High speed and low cost shaft sleeve

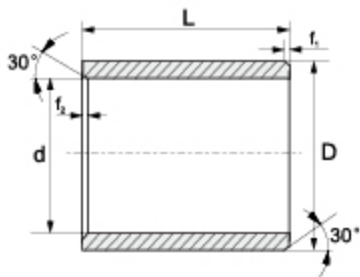


高化学抗性；
适合轻载高速运动；
连续使用温度 -200℃ +200℃ ...

High chemical resistance;
Suitable for light weight high-speed movement;
Continuous use temperature from 200 °C to + 200 °C ...

HPP0\HPP3\HPP17\HPP25\HPP26\HPP30\HPP31\HPP32 标准规格 Standard

直套 Metric Cylindrical Bushings



推荐安装公差 Recommend fitting tolerance:

座孔 Housing: H7

轴 Shaft: h9

订购编码 Order P/N:

HPP0-0304-03

— | — | — | —
 d D L

材料 Material

d	t ₁	t ₂
1-6	0.2	0.5
6-12	0.5	
12-30	0.8	
>30	1.2	

订购编码 Order PN	d [mm]	d-公差 After fitting [mm]	D [mm]	L(h13) [mm]
HPP0-0304-03	3	+0.014/+0.054	4.5	3
HPP0-0304-05	3	+0.014/+0.054	4.5	5
HPP0-0304-06	3	+0.014/+0.054	4.5	6
HPP0-0305-05	3	+0.014/+0.054	5	5
HPP0-0405-04	4	+0.02/+0.068	5.5	4
HPP0-0405-06	4	+0.02/+0.068	5.5	6
HPP0-0405-08	4	+0.02/+0.068	5.5	8
HPP0-0406-06	4	+0.02/+0.068	6	6
HPP0-0507-05	5	+0.02/+0.068	7	5
HPP0-0507-08	5	+0.02/+0.068	7	8
HPP0-0507-10	5	+0.02/+0.068	7	10
HPP0-0507-12	5	+0.02/+0.068	7	12
HPP0-0507-18	5	+0.02/+0.068	7	18
HPP0-0608-04	6	+0.02/+0.068	8	4
HPP0-0608-05	6	+0.02/+0.068	8	5
HPP0-0608-06	6	+0.02/+0.068	8	6
HPP0-0608-08	6	+0.02/+0.068	8	8
HPP0-0608-10	6	+0.02/+0.068	8	10
HPP0-0608-11	6	+0.02/+0.068	8	11
HPP0-0810-05	8	+0.025/+0.083	10	5
HPP0-0810-06	8	+0.025/+0.083	10	6
HPP0-0810-08	8	+0.025/+0.083	10	8
HPP0-0810-10	8	+0.025/+0.083	10	10
HPP0-0810-11	8	+0.025/+0.083	10	11
HPP0-0810-12	8	+0.025/+0.083	10	12
HPP0-0810-15	8	+0.025/+0.083	10	15
HPP0-0811-10	8	+0.025/+0.083	11	10
HPP0-0812-10	8	+0.025/+0.083	12	10
HPP0-0911-06	9	+0.025/+0.083	11	6
HPP0-1012-04	10	+0.025/+0.083	12	4
HPP0-1012-05	10	+0.025/+0.083	12	5
HPP0-1012-06	10	+0.025/+0.083	12	6
HPP0-1012-08	10	+0.025/+0.083	12	8
HPP0-1012-10	10	+0.025/+0.083	12	10
HPP0-1012-12	10	+0.025/+0.083	12	12

订购编码 Order PN	d [mm]	d-公差 After fitting [mm]	D [mm]	L(h13) [mm]
HPP0-1012-15	10	+0.025/+0.083	12	15
HPP0-1014-10	10	+0.025/+0.083	14	10
HPP0-1014-16	10	+0.025/+0.083	14	16
HPP0-1012-18	10	+0.025/+0.083	12	18
HPP0-1012-20	10	+0.025/+0.083	12	20
HPP0-1214-06	12	+0.032/+0.102	14	6
HPP0-1214-08	12	+0.032/+0.102	14	8
HPP0-1214-10	12	+0.032/+0.102	14	10
HPP0-1214-12	12	+0.032/+0.102	14	12
HPP0-1214-15	12	+0.032/+0.102	14	15
HPP0-1214-20	12	+0.032/+0.102	14	20
HPP0-1214-25	12	+0.032/+0.102	14	25
HPP0-1214-30	12	+0.032/+0.102	14	30
HPP0-1215-20	12	+0.032/+0.102	15	20
HPP0-1216-12	12	+0.032/+0.102	16	12
HPP0-1315-07	13	+0.032/+0.102	15	7
HPP0-1315-10	13	+0.032/+0.102	15	10
HPP0-1416-08	14	+0.032/+0.102	16	8
HPP0-1416-10	14	+0.032/+0.102	16	10
HPP0-1416-12	14	+0.032/+0.102	16	12
HPP0-1416-15	14	+0.032/+0.102	16	15
HPP0-1416-20	14	+0.032/+0.102	16	20
HPP0-1416-25	14	+0.032/+0.102	16	25
HPP0-1517-10	15	+0.032/+0.102	17	10
HPP0-1517-12	15	+0.032/+0.102	17	12
HPP0-1517-15	15	+0.032/+0.102	17	15
HPP0-1517-17	15	+0.032/+0.102	17	17
HPP0-1517-20	15	+0.032/+0.102	17	20
HPP0-1517-25	15	+0.032/+0.102	17	25
HPP0-1618-10	16	+0.032/+0.102	18	10
HPP0-1618-12	16	+0.032/+0.102	18	12
HPP0-1618-15	16	+0.032/+0.102	18	15
HPP0-1618-20	16	+0.032/+0.102	18	20
HPP0-1618-25	16	+0.032/+0.102	18	25
HPP0-1619-5.55	16	+0.015/+0.055	19	5.5

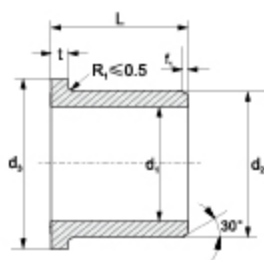
订购编码 Order PN	d [mm]	d-公差 After fitting [mm]	D [mm]	L(h13) [mm]
HPP0-1620-16	16	+0.032/+0.102	20	16
HPP0-1820-15	18	+0.032/+0.102	20	15
HPP0-1820-20	18	+0.032/+0.102	20	20
HPP0-1820-25	18	+0.032/+0.102	20	25
HPP0-2022-12	20	+0.04/+0.124	22	12
HPP0-2022-15	20	+0.04/+0.124	22	15
HPP0-2022-28	20	+0.04/+0.124	22	28
HPP0-2023-10	20	+0.04/+0.124	23	10
HPP0-2023-15	20	+0.04/+0.124	23	15
HPP0-2023-20	20	+0.04/+0.124	23	20
HPP0-2023-23	20	+0.04/+0.124	23	23
HPP0-2023-25	20	+0.04/+0.124	23	25
HPP0-2023-30	20	+0.04/+0.124	23	30
HPP0-2025-15	20	+0.04/+0.124	25	15
HPP0-2225-15	22	+0.04/+0.124	25	15
HPP0-2225-20	22	+0.04/+0.124	25	20
HPP0-2225-25	22	+0.04/+0.124	25	25
HPP0-2225-30	22	+0.04/+0.124	25	30
HPP0-2528-10	25	+0.04/+0.124	28	10
HPP0-2528-12	25	+0.04/+0.124	28	12
HPP0-2528-15	25	+0.04/+0.124	28	15
HPP0-2528-20	25	+0.04/+0.124	28	20
HPP0-2528-25	25	+0.04/+0.124	28	25
HPP0-2528-30	25	+0.04/+0.124	28	30
HPP0-252925	25	+0.04/+0.124	29	25
HPP0-2530-25	25	+0.02/+0.104	30	25
HPP0-2832-20	28	+0.04/+0.124	32	20
HPP0-2832-25	28	+0.04/+0.124	32	25
HPP0-2832-30	28	+0.04/+0.124	32	30
HPP0-3034-20	30	+0.04/+0.124	34	20
HPP0-3034-25	30	+0.04/+0.124	34	25
HPP0-3034-30	30	+0.04/+0.124	34	30
HPP0-3034-40	30	+0.04/+0.124	34	40

订购编码 Order PN	d [mm]	d-公差 After fitting [mm]	D [mm]	L(h13) [mm]
HPP0-3236-20	32	+0.05/+0.15	36	20
HPP0-3236-23	32	+0.05/+0.15	36	23
HPP0-3236-25	32	+0.05/+0.15	36	25
HPP0-3236-30	32	+0.05/+0.15	36	30
HPP0-3236-40	32	+0.05/+0.15	36	40
HPP0-3539-15	35	+0.05/+0.15	39	15
HPP0-3539-20	35	+0.05/+0.15	39	20
HPP0-3539-25	35	+0.05/+0.15	39	25
HPP0-3539-30	35	+0.05/+0.15	39	30
HPP0-3539-40	35	+0.05/+0.15	39	40
HPP0-3539-50	35	+0.05/+0.15	39	50
HPP0-4044-20	40	+0.05/+0.15	44	20
HPP0-4044-30	40	+0.05/+0.15	44	30
HPP0-4044-40	40	+0.05/+0.15	44	40
HPP0-4044-50	40	+0.05/+0.15	44	50
HPP0-4550-30	45	+0.05/+0.15	50	30
HPP0-4550-40	45	+0.05/+0.15	50	40
HPP0-4550-50	45	+0.05/+0.15	50	50
HPP0-5055-10	50	+0.05/+0.15	55	10
HPP0-5055-20	50	+0.05/+0.15	55	20
HPP0-5055-30	50	+0.05/+0.15	55	30
HPP0-5055-40	50	+0.05/+0.15	55	40
HPP0-5055-50	50	+0.05/+0.15	55	50
HPP0-5456-30	54	+0.060/+0.180	56	30
HPP0-6065-50	60	+0.060/+0.180	65	50
HPP0-7075-50	70	+0.060/+0.180	75	50
HPP0-8085-40	80	+0.060/+0.180	85	40
HPP0-8590-40	85	+0.072/+0.212	90	40
HPP0-125130-60S	125	+0.043/+0.143	130	60
HPP0-150155-60S	150	+0.043/+0.143	155	60

*d 公差为压入标准 H7 座孔 (ISO3547-1) 后公差

*Tolerance d: after being pressed into housing H7(ISO3547-1)

翻边轴套 Metric Flange Bushings



推荐安装公差 Recommend fitting tolerance:

座孔, Housing: H7

轴 Shaft: h9

订购编码 Order P/N:

HPP0 F-0304-03


 翻边轴套 Flange bushes
 材料 Material

d	f
1-6	0.3
6-12	0.5
12-20	0.8
>20	1.2

订购编码 Order PN	d ₁ [mm]	d ₁ -公差 After fitting [mm]	d ₂ [mm]	d ₂ [d13] [mm]	L[h13] [mm]	t _{max} [mm]
HPP0F-0304-03	3	+0.014/+0.054	4.5	7.5	3	0.75
HPP0F-0304-05	3	+0.014/+0.054	4.5	7.5	5	0.75
HPP0F-0405-03	4	+0.02/+0.068	5.5	9.5	3	0.75
HPP0F-0405-06	4	+0.02/+0.068	5.5	9.5	6	0.75
HPP0F-0507-03	5	+0.02/+0.068	7	11	3	1
HPP0F-0507-04	5	+0.02/+0.068	7	11	4	1
HPP0F-0507-05	5	+0.02/+0.068	7	11	5	1
HPP0F-0608-04	6	+0.02/+0.068	8	12	4	1
HPP0F-0608-05	6	+0.02/+0.068	8	12	5	1
HPP0F-0608-06	6	+0.02/+0.068	8	12	6	1
HPP0F-0608-08	6	+0.02/+0.068	8	12	8	1
HPP0F-0608-10	6	+0.02/+0.068	8	12	10	1
HPP0F-0810-05	8	+0.025/+0.083	10	15	5	1
HPP0F-0810-06	8	+0.025/+0.083	10	15	6	1
HPP0F-0810-07	8	+0.025/+0.083	10	15	7	1
HPP0F-0810-09	8	+0.025/+0.083	10	15	9	1
HPP0F-0810-10	8	+0.025/+0.083	10	15	10	1
HPP0F-081014-12	8	+0.025/+0.083	10	14	12	1
HPP0F-081014-12F2	8	+0.025/+0.083	10	14	12	2
HPP0F-0810-12	8	+0.025/+0.083	10	15	12	1
HPP0F-081018-13	8	+0.025/+0.083	10	18	13	1
HPP0F-081017-15	8	+0.025/+0.083	10	17	15	1
HPP0F-081216-10	8	+0.013/+0.071	12	16	10	2
HPP0F-0912-10	9	+0.025/+0.083	12	18	10	2
HPP0F-1012-05	10	+0.025/+0.083	12	18	5	1
HPP0F-1012-06	10	+0.025/+0.083	12	18	6	1
HPP0F-1012-07	10	+0.025/+0.083	12	18	7	1
HPP0F-1012-08	10	+0.025/+0.083	12	18	8	1
HPP0F-1012-09	10	+0.025/+0.083	12	18	9	1
HPP0F-1012-10	10	+0.025/+0.083	12	18	10	1
HPP0F-1012-12	10	+0.025/+0.083	12	18	12	1
HPP0F-1012-15	10	+0.025/+0.083	12	18	15	1
HPP0F-1012-17	10	+0.025/+0.083	12	18	17	1
HPP0F-101216-12	10	+0.013/+0.071	12	16	12	2
HPP0F-101418-10	10	+0.013/+0.071	14	18	10	2
HPP0F-1214-04	12	+0.032/+0.102	14	20	4	1
HPP0F-1214-05	12	+0.032/+0.102	14	20	5	1
HPP0F-1214-06	12	+0.032/+0.102	14	20	6	1
HPP0F-1214-07	12	+0.032/+0.102	14	20	7	1
HPP0F-1214-09	12	+0.032/+0.102	14	20	9	1
HPP0F-1214-10	12	+0.032/+0.102	14	20	10	1
HPP0F-1214-12	12	+0.032/+0.102	14	20	12	1
HPP0F-1214-13	12	+0.032/+0.102	14	20	13	1
HPP0F-1214-15	12	+0.032/+0.102	14	20	15	1
HPP0F-1214-17	12	+0.032/+0.102	14	20	17	1
HPP0F-1214-18	12	+0.032/+0.102	14	20	18	1
HPP0F-1214-20	12	+0.032/+0.102	14	20	20	1
HPP0F121417-04	12	+0.032/+0.102	14	17	4	1
HPP0F-121417-05	12	+0.032/+0.102	14	17	5	1
HPP0F-121418-12F2	12	+0.016/+0.086	14	18	12	2
HPP0F-121418-25	12	+0.032/+0.102	14	18	25	1
HPP0F-121418-40F2	12	+0.016/+0.086	14	18	40	2
HPP0F-121620-10	12	+0.016/+0.086	16	20	10	2
HPP0F-121620-12	12	+0.016/+0.086	16	20	12	2

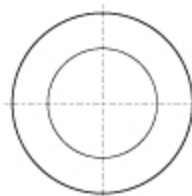
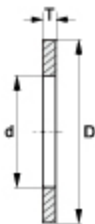
订购编码 Order PN	d ₁ [mm]	d ₁ -公差 After fitting [mm]	d ₂ [mm]	d ₂ [d13] [mm]	L[h13] [mm]	t _{max} [mm]
HPP0F-131519-12	13	+0.032/+0.102	15	19	12	1
HPP0F1416-052	14	+0.032/+0.102	16	22	5.2	1
HPP0F-1416-08	14	+0.032/+0.102	16	22	8	1
HPP0F-1416-10	14	+0.032/+0.102	16	22	10	1
HPP0F-1416-12	14	+0.032/+0.102	16	22	12	1
HPP0F-1416-17	14	+0.032/+0.102	16	22	17	1
HPP0F-141620-06	14	+0.016/+0.086	16	20	6	2
HPP0F-141620-15	14	+0.016/+0.086	16	20	15	2
HPP0F-141822-20	14	+0.032/+0.102	18	22	20	2
HPP0F-151720-05	15	+0.032/+0.102	17	20	5	1
HPP0F-1517-09	15	+0.032/+0.102	17	23	9	1
HPP0F-1517-12	15	+0.032/+0.102	17	23	12	1
HPP0F-151720-12	15	+0.032/+0.102	17	20	12	1
HPP0F-1517-15	15	+0.032/+0.102	17	23	15	1
HPP0F-1517-17	15	+0.032/+0.102	17	23	17	1
HPP0F-1517-20	15	+0.032/+0.102	17	23	20	1
HPP0F-1518-12	15	+0.032/+0.102	18	23	12	1
HPP0F-1517-25	15	+0.032/+0.102	17	23	25	1
HPP0F-1618-12	16	+0.032/+0.102	18	24	12	1
HPP0F-1618-17	16	+0.032/+0.102	18	24	17	1
HPP0F-161822-22	16	+0.016/+0.086	18	22	22	2
HPP0F-162024-16	16	+0.016/+0.086	20	24	16	2
HPP0F-162024-22	16	+0.016/+0.086	20	24	22	2
HPP0F-1820-12	18	+0.032/+0.102	20	26	12	1
HPP0F-1820-17	18	+0.032/+0.102	20	26	17	1
HPP0F-1820-20	18	+0.032/+0.102	20	26	20	1
HPP0F-182024-22	18	+0.016/+0.086	20	24	22	2
HPP0F-2022-15	20	+0.04/+0.124	22	25	15	1.5
HPP0F-2023-11.5	20	+0.04/+0.124	23	30	11.5	1.5
HPP0F-2023-16.5	20	+0.04/+0.124	23	30	16.5	1.5
HPP0F-2023-21.5	20	+0.04/+0.124	23	30	21.5	1.5
HPP0F-2023-25	20	+0.04/+0.124	23	30	25	1.5
HPP0F-202330-15	20	+0.02/+0.104	23	30	15	2
HPP0F-202330-22	20	+0.02/+0.104	23	30	22	2
HPP0F-202430-20	20	+0.02/+0.104	24	30	20	2
HPP0F-202530-15	20	+0.02/+0.104	25	30	15	2
HPP0F-202732-20	20	+0.02/+0.104	27	32	20	2
HPP0F-2225-11.5	22	+0.04/+0.124	25	33	11.5	1.5
HPP0F-2528-11.5	25	+0.04/+0.124	28	35	11.5	1.5
HPP0F-2528-16.5	25	+0.04/+0.124	28	35	16.5	1.5
HPP0F-2528-21.5	25	+0.04/+0.124	28	35	21.5	1.5
HPP0F-252835-22	25	+0.02/+0.104	28	35	22	2
HPP0F-252835-32	25	+0.02/+0.104	28	35	32	2
HPP0F-253035-20	25	+0.02/+0.104	30	35	20	2.5
HPP0F-253035-25	25	+0.02/+0.104	30	35	25	2.5
HPP0F-303335-04	30	+0.02/+0.104	33	35	4	1
HPP0F-3034-09	30	+0.04/+0.124	34	42	9	2
HPP0F-3034-16	30	+0.04/+0.124	34	42	16	2
HPP0F-3034-26	30	+0.04/+0.124	34	42	26	2
HPP0F-3034-32	30	+0.04/+0.124	34	42	32	2
HPP0F-3034-37	30	+0.04/+0.124	34	42	37	2
HPP0F-303445-18	30	+0.02/+0.104	34	45	18	2
HPP0F-303445-22	30	+0.02/+0.104	34	45	22	2
HPP0F-303445-32	30	+0.04/+0.124	34	45	32	2

订购编码 Order PN	d ₁ [mm]	d ₁ -公差 After fitting [mm]	d ₂ [mm]	d ₂ [d13] [mm]	L[h13] [mm]	t _{0.14} [mm]
HPP0F-3236-16	32	+0.05/+0.15	36	40	16	2
HPP0F-3236-26	32	+0.05/+0.15	36	40	26	2
HPP0F-3539-16	35	+0.05/+0.15	39	47	16	2
HPP0F-3539-26	35	+0.05/+0.15	39	47	26	2
HPP0F-353950-22	35	+0.025/+0.125	39	50	22	2
HPP0F-4044-30	40	+0.05/+0.15	44	52	30	2
HPP0F-4044-40	40	+0.05/+0.15	44	52	40	2
HPP0F-404455-17	40	+0.025/+0.125	44	55	17	2
HPP0F-4550-25	45	+0.05/+0.15	50	58	25	2
HPP0F-4550-45	45	+0.05/+0.15	50	58	45	2
HPP0F-4550-50	45	+0.05/+0.15	50	58	50	2
HPP0F-455060-45	45	+0.025/+0.125	50	60	45	2.5
HPP0F-5055-20	50	+0.05/+0.15	55	63	20	2
HPP0F-5055-30	50	+0.05/+0.15	55	63	30	2

订购编码 Order PN	d ₁ [mm]	d ₁ -公差 After fitting [mm]	d ₂ [mm]	d ₂ [d13] [mm]	L[h13] [mm]	t _{0.14} [mm]
HPP0F-5055-40	50	+0.05/+0.15	55	63	40	2
HPP0F-5055-50	50	+0.05/+0.15	55	63	50	2
HPP0F-505563-50	50	+0.025/+0.125	55	63	50	2
HPP0F-505565-20.5	50	+0.025/+0.125	55	65	20.5	2.5
HPP0F-6065-60	60	+0.06/+0.18	65	73	60	2
HPP0F-657080-60	65	+0.03/+0.15	70	80	60	2.5
HPP0F-7075-50	70	+0.060/+0.180	75	83	50	2
HPP0F-758090-25	75	+0.030/+0.150	80	90	25	2.5
HPP0F-758090-40	75	+0.030/+0.150	80	90	40	2.5
HPP0F-9095110-50	90	+0.036/+0.176	95	110	50	2.5
HPP0F-120125140-50	120	+0.072/+0.212	125	140	50	2.5

*d₁ 公差为压入标准 H7 座孔 (ISO3547-1) 后公差*Tolerance d₁: after being pressed into housing H7(ISO3547-1)

垫片 Metric Thrust Washers



订购编码 Order PN:

HPP0 W-0509-006

	d	D	T

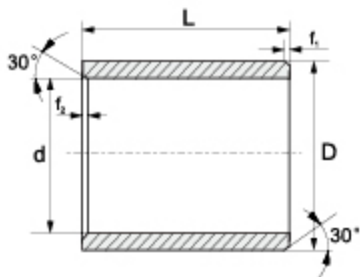
材料 Material

订购编码 Order PN	d ^{+0.25} [mm]	D _{±0.25} [mm]	T _{±0.05} [mm]
HPP0W-0509-006	5	9	0.6
HPP0W-0615-015	6	15	1.5
HPP0W-0620-015	6	20	1.5
HPP0W-0815-005	8	15	0.5
HPP0W-0815-015	8	15	1.5
HPP0W-0818-010	8	18	1.0
HPP0W-0818-015	8	18	1.5
HPP0W-1018-010	10	18	1.0
HPP0W-1018-015	10	18	1.5
HPP0W-1018-020	10	18	2.0
HPP0W-1024-015	10	24	1.5
HPP0W-1224-015	12	24	1.5
HPP0W-1226-015	12	26	1.5
HPP0W-1426-015	14	26	1.5
HPP0W-1430-015	14	30	1.5
HPP0W-1524-015	15	24	1.5
HPP0W-1630-015	16	30	1.5
HPP0W-1632-015	16	32	1.5
HPP0W-1832-015	18	32	1.5
HPP0W-1836-015	18	36	1.5

订购编码 Order PN	d ^{+0.25} [mm]	D _{±0.25} [mm]	T _{±0.05} [mm]
HPP0W-2030-015	20	30	1.5
HPP0W-2036-015	20	36	1.5
HPP0W-2038-015	20	38	1.5
HPP0W-2238-015	22	38	1.5
HPP0W-2242-015	22	42	1.5
HPP0W-2442-015	24	42	1.5
HPP0W-2444-015	24	44	1.5
HPP0W-2548-015	25	48	1.5
HPP0W-2644-015	26	44	1.5
HPP0W-2848-015	28	48	1.5
HPP0W-3054-015	30	54	1.5
HPP0W-3254-015	32	54	1.5
HPP0W-3662-015	36	62	1.5
HPP0W-3862-015	38	62	1.5
HPP0W-4266-015	42	66	1.5
HPP0W-4674-020	46	74	2.0
HPP0W-4874-020	48	74	2.0
HPP0W-5178-020	51	78	2.0
HPP0W-5278-020	52	78	2.0
HPP0W-6290-020	62	90	2.0

HPP1\HPP8\HPP12\HPP13\HPP14\HPP16\HPP19\HPP20\HPP21\HPP22\HPP23\HPP24 标准规格 Standard

直套 Metric Cylindrical Bushings



推荐安装公差 Recommend fitting tolerance:

座孔 Housing: H7

轴 Shaft: h9

订购编码 Order P/N:

HPP1-0203-03

—	d	D	L
---	---	---	---

材料 Material

d	t	t ₁
1-6	0.3	0.5
6-12	0.5	
12-30	0.8	
>30	1.2	

订购编码 Order PN	d [mm]	d-公差 After fitting [mm]	D [mm]	L(h13) [mm]
HPP1-0203-03	2	+0.014/+0.054	3.5	3
HPP1-0304-03	3	+0.014/+0.054	4.5	3
HPP1-0304-05	3	+0.014/+0.054	4.5	5
HPP1-0304-06	3	+0.014/+0.054	4.5	6
HPP1-0405-04	4	+0.02/+0.068	5.5	4
HPP1-0405-06	4	+0.02/+0.068	5.5	6
HPP1-0506-055	5	+0.01/+0.04	6	5
HPP1-0507-05	5	+0.02/+0.068	7	5
HPP1-050708	5	+0.02/+0.068	7	8
HPP1-0507-10	5	+0.02/+0.068	7	10
HPP1-0608-04	6	+0.02/+0.068	8	4
HPP1-0608-05	6	+0.02/+0.068	8	5
HPP1-0608-06	6	+0.02/+0.068	8	6
HPP1-0608-08	6	+0.02/+0.068	8	8
HPP1-0608-09	6	+0.02/+0.068	8	9
HPP1-0608-10	6	+0.02/+0.068	8	10
HPP1-0608-11	6	+0.02/+0.068	8	11
HPP1-0810-05	8	+0.025/+0.083	10	5
HPP1-0810-06	8	+0.025/+0.083	10	6
HPP1-0810-07	8	+0.025/+0.083	10	7
HPP1-0810-08	8	+0.025/+0.083	10	8
HPP1-0810-10	8	+0.025/+0.083	10	10
HPP1-0810-12	8	+0.025/+0.083	10	12
HPP1-0810-13	8	+0.025/+0.083	10	13
HPP1-0810-15	8	+0.025/+0.083	10	15
HPP1-0810-21	8	+0.025/+0.083	10	21
HPP1-1011-06	10	+0.025/+0.083	11	6
HPP1-1012-04	10	+0.025/+0.083	12	4
HPP1-1012-05	10	+0.025/+0.083	12	5
HPP1-1012-06	10	+0.025/+0.083	12	6
HPP1-1012-07	10	+0.025/+0.083	12	7
HPP1-1012-08	10	+0.025/+0.083	12	8
HPP1-1012-09	10	+0.025/+0.083	12	9
HPP1-1012-10	10	+0.025/+0.083	12	10
HPP1-1012-12	10	+0.025/+0.083	12	12
HPP1-1012-14	10	+0.025/+0.083	12	14

订购编码 Order PN	d [mm]	d-公差 After fitting [mm]	D [mm]	L(h13) [mm]
HPP1-1012-15	10	+0.025/+0.083	12	15
HPP1-1012-17	10	+0.025/+0.083	12	17
HPP1-1012-20	10	+0.025/+0.083	12	20
HPP1-1213-125	12	+0.016/+0.059	13	12
HPP1-1214-04	12	+0.032/+0.102	14	4
HPP1-1214-06	12	+0.032/+0.102	14	6
HPP1-1214-08	12	+0.032/+0.102	14	8
HPP1-1214-10	12	+0.032/+0.102	14	10
HPP1-1214-12	12	+0.032/+0.102	14	12
HPP1-1214-14	12	+0.032/+0.102	14	14
HPP1-1214-15	12	+0.032/+0.102	14	15
HPP1-1214-20	12	+0.032/+0.102	14	20
HPP1-1214-25	12	+0.032/+0.102	14	25
HPP1-1315-15	13	+0.032/+0.102	15	15
HPP1-1315-25	13	+0.032/+0.102	15	25
HPP1-1416-03	14	+0.032/+0.102	16	3
HPP1-1416-08	14	+0.032/+0.102	16	8
HPP1-1416-10	14	+0.032/+0.102	16	10
HPP1-1416-15	14	+0.032/+0.102	16	15
HPP1-1416-20	14	+0.032/+0.102	16	20
HPP1-1416-25	14	+0.032/+0.102	16	25
HPP1-1517-10	15	+0.032/+0.102	17	10
HPP1-1517-12	15	+0.032/+0.102	17	12
HPP1-1517-15	15	+0.032/+0.102	17	15
HPP1-1517-20	15	+0.032/+0.102	17	20
HPP1-1517-25	15	+0.032/+0.102	17	25
HPP1-1618-10	16	+0.032/+0.102	18	10
HPP1-1618-12	16	+0.032/+0.102	18	12
HPP1-1618-15	16	+0.032/+0.102	18	is
HPP1-1618-20	16	+0.032/+0.102	18	20
HPP1-1618-25	16	+0.032/+0.102	18	25
HPP1-1618-30	16	+0.032/+0.102	18	30
HPP1-1820-10	18	+0.032/+0.102	20	10
HPP1-1820-12	18	+0.032/+0.102	20	12
HPP1-1820-15	18	+0.032/+0.102	20	15
HPP1-1820-20	18	+0.032/+0.102	20	20

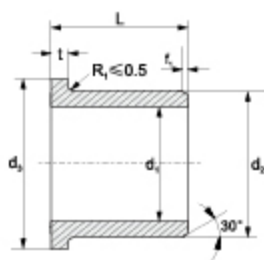
订购编码 Order PN	d [mm]	d-公差 After fitting [mm]	D [mm]	L(h13) [mm]
HPP1-1820-25	18	+0.032/+0.102	20	25
HPP1-2022-20	20	+0.04/+0.124	22	20
HPP1-2022-30	20	+0.04/+0.124	22	30
HPP1-2023-10	20	+0.04/+0.124	23	10
HPP1-2023-15	20	+0.04/+0.124	23	15
HPP1-2023-20	20	+0.04/+0.124	23	20
HPP1-2023-25	20	+0.04/+0.124	23	25
HPP1-2023-30	20	+0.04/+0.124	23	30
HPP1-2225-15	22	+0.04/+0.124	25	15
HPP1-2225-20	22	+0.04/+0.124	25	20
HPP1-2225-25	22	+0.04/+0.124	25	25
HPP1-2225-30	22	+0.04/+0.124	25	30
HPP1-2528-12	25	+0.04/+0.124	28	12
HPP1-2528-15	25	+0.04/+0.124	28	15
HPP1-2528-20	25	+0.04/+0.124	28	20
HPP1-2528-24	25	+0.04/+0.124	28	24
HPP1-2528-25	25	+0.04/+0.124	28	25
HPP1-2528-30	25	+0.04/+0.124	28	30
HPP1-2528-35	25	+0.04/+0.124	28	35
HPP1-2832-30	28	+0.04/+0.124	32	30
HPP1-3034-15	30	+0.04/+0.124	34	15
HPP1-3034-20	30	+0.04/+0.124	34	20
HPP1-3034-24	30	+0.04/+0.124	34	24
HPP1-3034-25	30	+0.04/+0.124	34	25
HPP1-3034-30	30	+0.04/+0.124	34	30
HPP1-3034-35	30	+0.04/+0.124	34	35
HPP1-3034-40	30	+0.04/+0.124	34	40
HPP1-3236-30	32	+0.05/+0.15	36	30
HPP1-3236-40	32	+0.05/+0.15	36	40
HPP1-3539-14	35	+0.05/+0.15	39	14
HPP1-3539-20	35	+0.05/+0.15	39	20
HPP1-3539-25	35	+0.05/+0.15	39	25
HPP1-3539-30	35	+0.05/+0.15	39	30

订购编码 Order PN	d [mm]	d-公差 After fitting [mm]	D [mm]	L(h13) [mm]
HPP1-3539-40	35	+0.05/+0.15	39	4C
HPP1-3539-50	35	+0.05/+0.15	39	5C
HPP1-3640-20	36	+0.05/+0.15	40	20
HPP1-4044-10	40	+0.05/+0.15	44	10
HPP1-4044-16	40	+0.05/+0.15	44	16
HPP1-4044-20	40	+0.05/+0.15	44	20
HPP1-4044-30	40	+0.05/+0.15	44	30
HPP1-4044-40	40	+0.05/+0.15	44	40
HPP1-4044-50	40	+0.05/+0.15	44	50
HPP1-4246-40	42	+0.05/+0.15	46	40
HPP1-4246-50	42	+0.05/+0.15	46	50
HPP1-4550-40	45	+0.05/+0.15	50	40
HPP1-4550-50	45	+0.05/+0.15	50	50
HPP1-5055-20	50	+0.05/+0.15	55	20
HPP1-5055-30	50	+0.05/+0.15	55	30
HPP1-5055-40	50	+0.05/+0.15	55	40
HPP1-5055-50	50	+0.05/+0.15	55	50
HPP1-5560-20	55	+0.06/+0.18	60	20
HPP1-5560-26	55	+0.06/+0.18	60	26
HPP1-5560-40	55	+0.06/+0.18	60	40
HPP1-5560-50	55	+0.06/+0.18	60	50
HPP1-5560-60	55	+0.06/+0.18	60	60
HPP1-6065-30	60	+0.06/+0.18	65	30
HPP1-6065-40	60	+0.06/+0.18	65	40
HPP1-6065-50	60	+0.06/+0.18	65	50
HPP1-6065-60	60	+0.06/+0.18	65	60
HPP1-6570-50	65	+0.06/+0.18	70	50
HPP1-7075-60	70	+0.06/+0.18	75	60
HPP1-7580-40	75	+0.06/+0.18	80	40
HPP1-115121-90	115	+0.072/+0.212	121	90
HPP1-120125-100	120	+0.072/+0.212	125	100

*d 公差为压入标准 H7 座孔 (ISO3547-1) 后公差

*Tolerance d: after being pressed into housing H7(ISO3547-1)

翻边轴套 Metric Flange Bushings



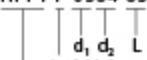
推荐安装公差 Recommend fitting tolerance:

座孔 Housing: H7

轴 Shaft: h9

订购编码 Order P/N:

HPP1 F-0304-03



 d₁ d₂ L
 翻边轴套 Flange bushes
 材料 Material

d	f
1-6	0.3
6-12	0.5
12-20	0.8
>20	1.2

订购编码 Order PN	d ₁ [mm]	d ₁ -公差 After fitting [mm]	d ₂ [mm]	d ₂ [d13] [mm]	L[h13] [mm]	t _{max} [mm]
HPP1F-0304-03	3	+0.014/+0.054	4.5	7.5	3	0.75
HPP1F-0304-05	3	+0.014/+0.054	4.5	7.5	5	0.75
HPP1F-0405-03	4	+0.02/+0.068	5.5	9.5	3	0.75
HPP1F-0405-04	4	+0.02/+0.068	5.5	9.5	4	0.75
HPP1F-0405-06	4	+0.02/+0.068	5.5	9.5	6	0.75
HPP1F-0506-3.55	5	+0.01/+0.04	6	10	3.5	0.5
HPP1F-0506-055	5	+0.01/+0.04	6	10	5	0.5
HPP1F-050614-065	5	+0.01/+0.04	6	14	6	0.5
HPP1F-0507-03	5	+0.02/+0.068	7	11	3	1
HPP1F-0507-04	5	+0.02/+0.068	7	11	4	1
HPP1F-0507-05	5	+0.02/+0.068	7	11	5	1
HPP1F-0507-07	5	+0.02/+0.068	7	11	7	1
HPP1F-0607-10	6	+0.01/+0.04	7	11	10	0.5
HPP1F-608-04	6	+0.02/+0.068	8	12	4	1
HPP1F-0608-05	6	+0.02/+0.068	8	12	5	1
HPP1F-0608-06	6	+0.02/+0.068	8	12	6	1
HPP1F-0608-07	6	+0.02/+0.068	8	12	7	1
HPP1F-0608-08	6	+0.02/+0.068	8	12	8	1
HPP1F-0608-10	6	+0.02/+0.068	8	12	10	1
HPP1F-0708-085	7	+0.013/+0.049	8	12	8	0.5
HPP1F-0809-12	8	+0.013/+0.049	9	13	12	0.5
HPP1F-0810-04	8	+0.025/+0.083	10	15	4	1
HPP1F-0810-05	8	+0.025/+0.083	10	15	5	1
HPP1F-0810-07	8	+0.025/+0.083	10	15	7	1
HPP1F-0810-09	8	+0.025/+0.083	10	15	9	1
HPP1F-0810-10	8	+0.025/+0.083	10	15	10	1
HPP1F-0810-15	8	+0.025/+0.083	10	15	15	1
HPP1F-0810-30	8	+0.025/+0.083	10	15	30	1
HPP1F-1012-04	10	+0.025/+0.083	12	18	4	1
HPP1F-1012-05	10	+0.025/+0.083	12	18	5	1
HPP1F-1012-06	10	+0.025/+0.083	12	18	6	1
HPP1F-1012-07	10	+0.025/+0.083	12	18	7	1
HPP1F-101209	10	+0.025/+0.083	12	18	9	1
HPP1F-101210	10	+0.025/+0.083	12	18	10	1
HPP1F-1012-12	10	+0.025/+0.083	12	18	12	1
HPP1F-1012-15	10	+0.025/+0.083	12	18	15	1
HPP1F-1012-17	10	+0.025/+0.083	12	18	17	1
HPP1F-101216-06	10	+0.025/+0.083	12	16	6	1
HPP1F-101216-09	10	+0.025/+0.083	12	16	9	1
HPP1F-1213-125	12	+0.016/+0.059	13	17	12	0.5
HPP1F-1214-06	12	+0.032/+0.102	14	20	6	1
HPP1F-1214-07	12	+0.032/+0.102	14	20	7	1
HPP1F-1214-09	12	+0.032/+0.102	14	20	9	1
HPP1F-1214-10	12	+0.032/+0.102	14	20	10	1
HPP1F-1214-11	12	+0.032/+0.102	14	20	11	1
HPP1F-1214-12	12	+0.032/+0.102	14	20	12	1
HPP1F-1214-15	12	+0.032/+0.102	14	20	15	1

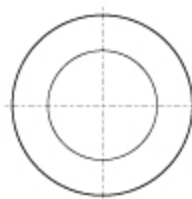
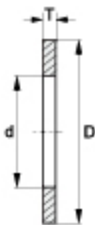
订购编码 Order PN	d ₁ [mm]	d ₁ -公差 After fitting [mm]	d ₂ [mm]	d ₂ [d13] [mm]	L[h13] [mm]	t _{max} [mm]
HPP1F-1214-17	12	+0.032/+0.102	14	20	17	1
HPP1F-1214-20	12	+0.032/+0.102	14	20	20	1
HPP1F-1214-24	12	+0.032/+0.102	14	20	24	1
HPP1F-1416-03	14	+0.032/+0.102	16	22	3	1
HPP1F-1416-04	14	+0.032/+0.102	16	22	4	1
HPP1F-1416-06	14	+0.032/+0.102	16	22	6	1
HPP1F-1416-08	14	+0.032/+0.102	16	22	8	1
HPP1F-1416-12	14	+0.032/+0.102	16	22	12	1
HPP1F-1416-17	14	+0.032/+0.102	16	22	17	1
HPP1F-1416-21	14	+0.032/+0.102	16	22	21	1
HPP1F-1517-05	15	+0.032/+0.102	17	23	5	1
HPP1F-1517-09	15	+0.032/+0.102	17	23	9	1
HPP1F-1517-12	15	+0.032/+0.102	17	23	12	1
HPP1F-1517-17	15	+0.032/+0.102	17	23	17	1
HPP1F-1517-20	15	+0.032/+0.102	17	23	20	1
HPP1F-1618-09	16	+0.032/+0.102	18	24	9	1
HPP1F-1618-12	16	+0.032/+0.102	18	24	12	1
HPP1F-1618-17	16	+0.032/+0.102	18	24	17	1
HPP1F-1618-21	16	+0.032/+0.102	18	24	21	1
HPP1F-1719-09	17	+0.032/+0.102	19	25	9	1
HPP1F-1719-25	17	+0.032/+0.102	19	25	25	1
HPP1F-1820-04	18	+0.032/+0.102	20	26	4	1
HPP1F-1820-06	18	+0.032/+0.102	20	26	6	1
HPP1F-1820-11	18	+0.032/+0.102	20	26	11	1
HPP1F-1820-12	18	+0.032/+0.102	20	26	12	1
HPP1F-1820-17	18	+0.032/+0.102	20	26	17	1
HPP1F-1820-22	18	+0.032/+0.102	20	26	22	1
HPP1F-1820-30	18	+0.032/+0.102	20	26	30	1
HPP1F-2023-3.2	20	+0.04/+0.124	23	30	3.2	1.5
HPP1F-2023-07	20	+0.04/+0.124	23	30	7	1.5
HPP1F-2023-11.5	20	+0.04/+0.124	23	30	11.5	1.5
HPP1F-2023-16.5	20	+0.04/+0.124	23	30	16.5	1.5
HPP1F-2023-21.5	20	+0.04/+0.124	23	30	21.5	1.5
HPP1F-222535-09	22	+0.04/+0.124	25	35	9	1.5
HPP1F-2427-10	24	+0.04/+0.124	27	32	10	1.5
HPP1F-2528-11.5	25	+0.04/+0.124	28	35	11.5	1.5
HPP1F-2528-16.5	25	+0.04/+0.124	28	35	16.5	1.5
HPP1F-2528-21.5	25	+0.04/+0.124	28	35	21.5	1.5
HPP1F-2528-30	25	+0.04/+0.124	28	35	30	1.5
HPP1F-2830-36	28	+0.04/+0.124	30	35	36	2
HPP1F-3032-12	30	+0.04/+0.124	32	37	12	1
HPP1F-3034-16	30	+0.04/+0.124	34	42	16	2
HPP1F-3034-20	30	+0.04/+0.124	34	42	20	2
HPP1F-3034-26	30	+0.04/+0.124	34	42	26	2
HPP1F-3034-37	30	+0.04/+0.124	34	42	37	2
HPP1F-3034-45	30	+0.04/+0.124	34	42	45	2
HPP1F-3236-16	32	+0.05/+0.15	36	40	16	2

订购编码 Order PN	d ₁ [mm]	d ₁ -公差 After fitting [mm]	d ₂ [mm]	d ₂ [d13] [mm]	L[h13] [mm]	t _{0.12} [mm]
HPP1F-3236-26	32	+0.05/+0.15	36	40	26	2
HPP1F-3539-07	35	+0.05/+0.15	39	47	7	2
HPP1F-3539-12	35	+0.05/+0.15	39	47	12	2
HPP1F-3539-16	35	+0.05/+0.15	39	47	16	2
HPP1F-3539-26	35	+0.05/+0.15	39	47	26	2
HPP1F-3539-36	35	+0.05/+0.15	39	47	36	2
HPP1F-4044-14	40	+0.05/+0.15	44	52	14	2
HPP1F-4044-20	40	+0.05/+0.15	44	52	20	2
HPP1F-4044-30	40	+0.05/+0.15	44	52	30	2
HPP1F-4044-40	40	+0.05/+0.15	44	52	40	2
HPP1F-4044-50	40	+0.05/+0.15	44	52	50	2
EP83F-4246-50	42	+0.05/+0.15	46	53	50	2
HPP1F-4550-30	45	+0.05/+0.15	50	58	30	2
HPP1F-4550-50	45	+0.05/+0.15	50	58	50	2

订购编码 Order PN	d ₁ [mm]	d ₁ -公差 After fitting [mm]	d ₂ [mm]	d ₂ [d13] [mm]	L[h13] [mm]	t _{0.12} [mm]
HPP1F-5055-10	50	+0.05/+0.15	55	63	10	2
HPP1F-5055-40	50	+0.05/+0.15	55	63	40	2
HPP1F-5055-50	50	+0.05/+0.15	55	63	50	2
HPP1F-6065-07	60	+0.06/+0.18	65	73	7	2
HPP1F-6065-22	60	+0.06/+0.18	65	73	22	2
HPP1F-6065-30	60	+0.06/+0.18	65	73	30	2
HPP1F-6065-50	60	+0.06/+0.18	65	73	50	2
HPP1F-6570-50	65	+0.06/+0.18	70	78	50	2
HPP1F-7075-50	70	+0.06/+0.18	75	83	50	2
HPP1F-9095-11	90	+0.072/+0.212	95	103	11	2.5
HPP1F-100105-11.5	100	+0.072/+0.212	105	113	11.5	2.5
HPP1F-100105-100	100	+0.072/+0.212	105	113	100	2.5

*d₁ 公差为压入标准 H7 座孔 (ISO3547-1) 后公差*Tolerance d₁ after being pressed into housing H7(ISO3547-1)

垫片 Metric Thrust Washers



订购编码 Order PN:

HPP1 W-0509-006



垫片 Washer

材料 Material

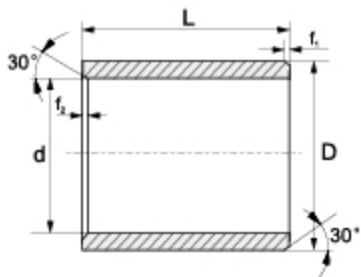
订购编码 Order PN	d ^{h25} [mm]	D _{h25} [mm]	T _{h05} [mm]
HPP1W-0509-006	5	9	0.6
HPP1W-0615-015	6	15	1.5
HPP1W-0620-015	6	20	1.5
HPP1W-0815-005	8	15	0.5
HPP1W-0815-015	8	15	1.5
HPP1W-0818-010	8	18	1.0
HPP1W-0818-015	8	18	1.5
HPP1W-1018-010	10	18	1.0
HPP1W-1018-015	10	18	1.5
HPP1W1-018-020	10	18	2.0
HPP1W-1224-015	12	24	1.5
HPP1W-1426-015	14	26	1.5
HPP1W-1524-015	15	24	1.5
HPP1W-1630-015	16	30	1.5

订购编码 Order PN	d ^{h25} [mm]	D _{h25} [mm]	T _{h05} [mm]
HPP1W-1832-015	18	32	1.5
HPP1W-2036-015	20	36	1.5
HPP1W-2238-015	22	38	1.5
HPP1W-2442-015	24	42	1.5
HPP1W-2640-0075	26	40	0.75
HPP1W-2644-015	26	44	1.5
HPP1W-2848-015	28	48	1.5
HPP1W-3254-015	32	54	1.5
HPP1W-3862-015	38	62	1.5
HPP1W-4266-015	42	66	1.5
HPP1W-4874-020	48	74	2.0
HPP1W-5278-020	52	78	2.0
HPP1W-6290-020	62	90	2.0

* 根据要求提供定位孔设计 The fixing bore design upon request

HPP2 标准规格 Standard

直套 Metric Cylindrical Bushings



推荐安装公差 Recommend fitting tolerance:

座孔 Housing: H7

轴 Shaft: h9

订购编码 Order P/N:

HPP2-0306-04

— | — | — | —
 d D L

材料 Material

d	t	t1
1-6	0.2	0.5
6-12	0.3	
12-30	0.4	
>30	1.2	

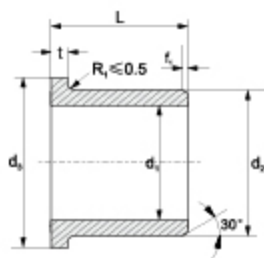
订购编码 Order PN	d [mm]	d- 公差 After fitting [mm]	D [mm]	L(h13) [mm]
HPP2-0306-04	3	+0.20/+0.080	6	4
HPP2-0509-05	5	+0.030/+0.105	9	5
HPP2-0509-08	5	+0.030/+0.105	9	8
HPP2-0610-04	6	+0.030/+0.105	10	4
HPP2-0610-06	6	+0.030/+0.105	10	6
HPP2-0610-08	6	+0.030/+0.105	10	8
HPP2-0610-10	6	+0.030/+0.105	10	10
HPP2-0612-06	6	+0.030/+0.105	12	6
HPP2-0612-10	6	+0.030/+0.105	12	10
HPP2-0812-04	8	+0.040/+0.130	12	4
HPP2-0812-06	8	+0.040/+0.130	12	6
HPP2-0812-08	8	+0.040/+0.130	12	8
HPP2-0812-10	8	+0.040/+0.130	12	10
HPP2-0812-12	8	+0.040/+0.130	12	12
HPP2-0814-06	8	+0.040/+0.130	14	6
HPP2-0814-10	8	+0.040/+0.130	14	10
HPP2-1014-06	10	+0.040/+0.130	14	6
HPP2-1014-08	10	+0.040/+0.130	14	8
HPP2-1014-10	10	+0.040/+0.130	14	10
HPP2-1014-12	10	+0.040/+0.130	14	12
HPP2-1016-06	10	+0.040/+0.130	16	6
HPP2-1016-08	10	+0.040/+0.130	16	8
HPP2-1016-10	10	+0.040/+0.130	16	10
HPP2-1216-10	12	+0.050/+0.160	16	10
HPP2-1216-15	12	+0.050/+0.160	16	15
HPP2-1216-20	12	+0.050/+0.160	16	20
HPP2-1218-08	12	+0.050/+0.160	18	8
HPP2-1218-10	12	+0.050/+0.160	18	10
HPP2-1218-12	12	+0.050/+0.160	18	12
HPP2-1218-15	12	+0.050/+0.160	18	15
HPP2-1218-20	12	+0.050/+0.160	18	20

订购编码 Order PN	d [mm]	d- 公差 After fitting [mm]	D [mm]	L(h13) [mm]
HPP2-1420-10	14	+0.050/+0.160	20	10
HPP2-1420-15	14	+0.050/+0.160	20	15
HPP2-1420-20	14	+0.050/+0.160	20	20
HPP2-1521-10	15	+0.050/+0.160	21	10
HPP2-1521-15	15	+0.050/+0.160	21	15
HPP2-1521-20	15	+0.050/+0.160	21	20
HPP2-1521-25	15	+0.050/+0.160	21	25
HPP2-1620-12	16	+0.050/+0.160	20	12
HPP2-1620-15	16	+0.050/+0.160	20	15
HPP2-1620-20	16	+0.050/+0.160	20	20
HPP2-1620-25	16	+0.050/+0.160	20	25
HPP2-1622-12	16	+0.050/+0.160	22	12
HPP2-1622-15	16	+0.050/+0.160	22	15
HPP2-1622-20	16	+0.050/+0.160	22	20
HPP2-1622-25	16	+0.050/+0.160	22	25
HPP2-2025-14	20	+0.065/+0.195	25	14
HPP2-2025-20	20	+0.065/+0.195	25	20
HPP2-2026-15	20	+0.065/+0.195	26	15
HPP2-2026-17	20	+0.065/+0.195	26	17
HPP2-2026-20	20	+0.065/+0.195	26	20
HPP2-2026-30	20	+0.065/+0.195	26	30
HPP2-2530-20	25	+0.065/+0.195	30	20
HPP2-2530-30	25	+0.065/+0.195	30	30
HPP2-2532-20	25	+0.065H-0.195	32	20
HPP2-2532-30	25	+0.065/+0.195	32	30
HPP2-3038-20	30	+0.065/+0.195	38	20
HPP2-3038-30	30	+0.065/+0.195	38	30
HPP2-3038-40	30	+0.065/+0.195	38	40

*d 公差为压入标准 H7 座孔 (ISO3547-1) 后公差

*Tolerance d: after being pressed into housing H7(ISO3547-1)

翻边轴套 Metric Flange Bushings



推荐安装公差 Recommend fitting tolerance:

座孔 Housing: H7

轴 Shaft: h9

订购编码 Order P/N:

HPP2 F-0306-04

翻边轴套 Flange bushes

材料 Material

d	f
1-4	0.3
6-12	0.5
12-20	0.8
>20	1.2

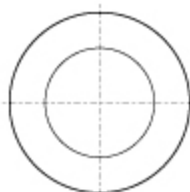
订购编码 Order PN	d ₁ [mm]	d ₁ -公差 After fitting [mm]	d ₂ [mm]	d ₃ [d13] [mm]	L[h13] [mm]	t _{0.12} [mm]
HPP2F-0306-04	3	+0.020/+0.080	6	9	4	1.5
HPP2F-0509-05	5	+0.030/+0.105	9	13	5	2
HPP2F-0509-06	5	+0.030/+0.105	9	13	6	2
HPP2F-0509-08	5	+0.030/+0.105	9	13	8	2
HPP2F-0610-04	6	+0.030/+0.105	10	14	4	2
HPP2F-0610-06	6	+0.030/+0.105	10	14	6	2
HPP2F-0610-08	6	+0.030/+0.105	10	14	8	2
HPP2F-0610-10	6	+0.030/+0.105	10	14	10	2
HPP2F-0612-06	6	+0.030/+0.105	12	14	6	3
HPP2F-0612-10	6	+0.030/+0.105	12	14	10	3
HPP2F-0812-06	8	+0.040/+0.130	12	16	6	2
HPP2F-0812-08	8	+0.040/+0.130	12	16	8	2
HPP2F-0812-10	8	+0.040/+0.130	12	16	10	2
HPP2F-0812-12	8	+0.040/+0.130	12	16	12	2
HPP2F-081416-06	8	+0.040/+0.130	14	16	6	3
HPP2F-081416-10	8	+0.040/+0.130	14	16	10	3
HPP2F-0814-06	8	+0.040/+0.130	14	18	6	3
HPP2F-0814-10	8	+0.040/+0.130	14	18	10	3
HPP2F-1014-06	10	+0.040/+0.130	14	19	6	2
HPP2F-1014-08	10	+0.040/+0.130	14	19	8	2
HPP2F-1014-10	10	+0.040/+0.130	14	19	10	2
HPP2F101420-12	10	+0.040/+0.130	14	20	12	2
HPP2F-101620-06	10	+0.040/+0.130	16	20	6	3
HPP2F-1016-08	10	+0.040/+0.130	16	22	8	3
HPP2F-101620-10	10	+0.040/+0.130	16	20	10	3
HPP2F-1216-10	12	+0.050/+0.160	16	22	10	2
HPP2F-1216-20	12	+0.050/+0.160	16	22	20	2
HPP2F-1218-08	12	+0.050/+0.160	18	24	8	3
HPP2F-1218-10	12	+0.050/+0.160	18	22	10	3
HPP2F-1218-12	12	+0.050/+0.160	18	24	12	3

订购编码 Order PN	d ₁ [mm]	d ₁ -公差 After fitting [mm]	d ₂ [mm]	d ₃ [d13] [mm]	L[h13] [mm]	t _{0.12} [mm]
HPP2F-1218-15	12	+0.050/+0.160	18	22	15	3
HPP2F-1218-20	12	+0.050/+0.160	18	22	20	3
HPP2F-1420-10	14	+0.050/+0.160	20	25	10	3
HPP2F-1420-15	14	+0.050/+0.160	20	25	15	3
HPP2F-1420-20	14	+0.050/+0.160	20	25	20	3
HPP2F-1521-10	15	+0.050/+0.160	21	27	10	3
HPP2F-1521-15	15	+0.050/+0.160	21	27	15	3
HPP2F-1521-20	15	+0.050/+0.160	21	27	20	3
HPP2F-1521-25	15	+0.050/+0.160	21	27	25	3
HPP2F-1620-12	16	+0.050/+0.160	20	27	12	3
HPP2F-1620-15	16	+0.050/+0.160	20	27	15	3
HPP2F-1620-20	16	+0.050/+0.160	20	27	20	3
HPP2F-1620-25	16	+0.050/+0.160	20	27	25	3
HPP2F-1622-12	16	+0.050/+0.160	22	28	12	3
HPP2F-1622-15	16	+0.050/+0.160	22	28	15	3
HPP2F-1622-20	16	+0.050/+0.160	22	28	20	3
HPP2F-1622-25	16	+0.050/+0.160	22	28	25	3
HPP2F-162230-15	16	+0.050/+0.160	22	30	15	2
HPP2F-2026-15	20	+0.065/+0.195	26	32	15	3
HPP2F-202620	20	+0.065/+0.195	26	32	20	3
HPP2F-2026-30	20	+0.065/+0.195	26	32	30	3
HPP2F-2430-30	24	+0.065/+0.195	30	36	30	3
HPP2F-2532-20	25	+0.065/+0.195	32	38	20	4
HPP2F-2532-30	25	+0.065/+0.195	32	38	30	4
HPP2F-3038-20	30	+0.065/+0.195	38	44	20	4
HPP2F-3038-30	30	+0.065/+0.195	38	44	30	4
HPP2F-3038-40	30	+0.065/+0.195	38	44	40	4

*d₁ 公差为压入标准 H7 座孔 (ISO3547-1) 后公差

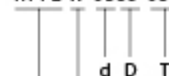
*Tolerance d₁: after being pressed into housing H7(ISO3547-1)

垫片 Metric Thrust Washers



订购编码 Order PN:

HPP2 W-0509-006



垫片 Washer

材料 Material

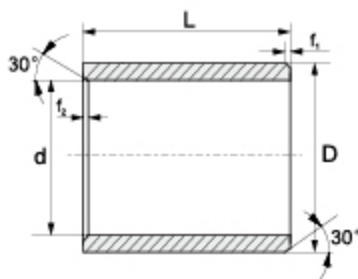
订购编码 Order PN	$d^{+0.25}$ [mm]	$D_{+0.25}$ [mm]	$T_{+0.25}$ [mm]
HPP2W-0509-006	5	9	0.6
HPP2W-0615-015	6	15	1.5
HPP2W-0620-015	6	20	1.5
HPP2W-0815-005	8	15	0.5
HPP2W-0815-015	8	15	1.5
HPP2W-0818-005	8	18	0.5
HPP2W-0818-010	8	18	1.0
HPP2W-0818-015	8	18	1.5
HPP2W-1018-010	10	18	1.0
HPP2W-1018-015	10	18	1.5
HPP2W-1018-020	10	18	2.0
HPP2W-1224-012	12	24	1.2
HPP2W-1224-015	12	24	1.5
HPP2W-1426-015	14	26	1.5
HPP2W-1524-015	15	24	1.5

订购编码 Order PN	$d^{+0.25}$ [mm]	$D_{+0.25}$ [mm]	$T_{+0.25}$ [mm]
HPP2W 1630-015	16	30	1.5
HPP2W-1832-015	18	32	1.5
HPP2W-2032-010	20	32	1.0
HPP2W-2036-015	20	36	1.5
HPP2W-2238-015	22	38	1.5
HPP2W-2442-015	24	42	1.5
HPP2W-2644-015	26	44	1.5
HPP2W-2848-015	28	48	1.5
HPP2W-3254-015	32	54	1.5
HPP2W-3862-015	38	62	1.5
HPP2W-4266-015	42	66	1.5
HPP2W-4874-020	48	74	2.0
HPP2W-5278-020	52	78	2.0
HPP2W-6290-020	62	90	2.0

* 根据要求提供定位孔设计 The fixing bore design upon request

HPP5\HPP7\HPP10\HPP11\HPP15 标准规格 Standard

直套 Metric Cylindrical Bushings



推荐安装公差 Recommend fitting tolerance:

座孔 Housing: H7

轴 Shaft: h9

订购编码 Order P/N:

HPP5-0304-03

— | — | — | —
 d D L

材料 Material

d	f ₁	f ₂
1-4	0.2	0.5
6-12	0.3	
12-20	0.4	
>20	1.2	

订购编码 Order PN	d [mm]	d-公差 After fitting [mm]	D [mm]	L(h13) [mm]
HPP5-0304-03	3	+0.006/+0.046	4.5	3
HPP5-0304-06	3	+0.006/+0.046	4.5	6
HPP5-0405-04	4	+0.010/+0.058	5.5	4
HPP5-0405-06	4	+0.010/+0.058	5.5	6
HPP5-0507-05	5	+0.010/+0.058	7	5
EP85-0507-08	5	+0.010/+0.058	7	8
HPP5-0608-06	6	+0.010/+0.058	8	6
HPP5-0608-08	6	+0.010/+0.058	8	8
HPP5-0608-10	6	+0.010/+0.058	8	10
HPP5-0810-06	8	+0.013/+0.071	10	6
HPP5-0810-08	8	+0.013/+0.071	10	8
HPP5-0810-10	8	+0.013/+0.071	10	10
HPP5-0810-12	8	+0.013/+0.071	10	12
HPP5-0810-15	8	+0.013/+0.071	10	15
HPP5-1012-06	10	+0.013/+0.071	12	6
HPP5-1012-08	10	+0.013/+0.071	12	8
HPP5-1012-10	10	+0.013/+0.071	12	10
HPP5-1012-12	10	+0.013/+0.071	12	12
HPP5-1012-15	10	+0.013/+0.071	12	15
HPP5-1012-20	10	+0.013/+0.071	12	20
HPP5-1214-06	12	+0.016/+0.086	14	6
HPP5-1214-08	12	+0.016/+0.086	14	8
HPP5-1214-10	12	+0.016/+0.086	14	10
HPP5-1214-12	12	+0.016/+0.086	14	12
HPP5-1214-15	12	+0.016/+0.086	14	15
HPP5-1214-20	12	+0.016/+0.086	14	20
HPP5-1214-25	12	+0.016/+0.086	14	25
HPP5-1416-12	14	+0.016/+0.086	16	12
HPP5-1416-15	14	+0.016/+0.086	16	15
HPP5-1416-20	14	+0.016/+0.086	16	20
HPP5-1517-07	15	+0.016/+0.086	17	7
HPP5-1517-10	15	+0.016/+0.086	17	10
HPP5-1517-15	15	+0.016/+0.086	17	15
HPP5-1517-20	15	+0.016/+0.086	17	20
HPP5-1517-25	15	+0.016/+0.086	17	25

订购编码 Order PN	d [mm]	d-公差 After fitting [mm]	D [mm]	L(h13) [mm]
HPP5-1618-10	16	+0.016/+0.086	18	10
HPP5-1618-12	16	+0.016/+0.086	18	12
HPP5-1618-15	16	+0.016/+0.086	18	15
HPP5-1618-20	16	+0.016/+0.086	18	20
HPP5-1618-25	16	+0.016/+0.086	18	25
HPP5-1618-35	16	+0.016/+0.086	18	35
HPP5-1719-20	17	+0.016/+0.086	19	20
HPP5-1820-15	18	+0.016/+0.086	20	15
HPP5-1820-20	18	+0.016/+0.086	20	20
HPP5-1820-25	18	+0.016/+0.086	20	25
HPP5-2023-10	20	+0.020/+0.104	23	10
HPP5-2023-15	20	+0.020/+0.104	23	15
HPP5-2023-20	20	+0.020/+0.104	23	20
HPP5-2023-25	20	+0.020/+0.104	23	25
HPP5-2023-30	20	+0.020/+0.104	23	30
HPP5-2225-15	22	+0.020/+0.104	25	15
HPP5-2225-20	22	+0.020/+0.104	25	20
HPP5-2528-09	25	+0.020/+0.104	28	9
HPP5-2528-12	25	+0.020/+0.104	28	12
HPP5-2528-13	25	+0.020/+0.104	28	13
HPP5-2528-15	25	+0.020/+0.104	28	15
HPP5-2528-20	25	+0.020/+0.104	28	20
HPP5-2528-30	25	+0.020/+0.104	28	30
HPP5-2528-35	25	+0.020/+0.104	28	35
HPP5-2832-20	28	+0.020/+0.104	32	20
HPP5-2832-30	28	+0.020/+0.104	32	30
HPP5-3034-15	30	+0.020/+0.104	34	15
HPP5-3034-20	30	+0.020/+0.104	34	20
HPP5-3034-25	30	+0.020/+0.104	34	25
HPP5-3034-30	30	+0.020/+0.104	34	30
HPP5-3034-40	30	+0.020/+0.104	34	40
HPP5-3034-60	30	+0.020/+0.104	34	60
HPP5-3236-25	32	+0.025/+0.125	36	25
HPP5-3236-30	32	+0.025/+0.125	36	30
HPP5-3236-40	32	+0.025/+0.125	36	40

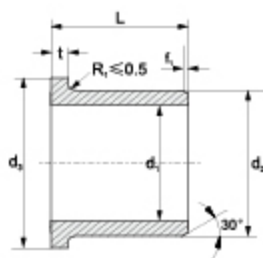
订购编码 Order PN	d [mm]	d- 公差 After fitting [mm]	D [mm]	L(h13) [mm]
HPP5-3539-20	35	+0.025/+0.125	39	20
HPP5-3539-30	35	+0.025/+0.125	39	30
HPP5-3539-40	35	+0.025/+0.125	39	40
HPP5-3539-50	35	+0.025/+0.125	39	50
HPP5-4044-20	40	+0.025/+0.125	44	20
HPP5-4044-30	40	+0.025/+0.125	44	30
HPP5-4044-40	40	+0.025/+0.125	44	40
HPP5-4044-50	40	+0.025/+0.125	44	50
HPP5-4550-30	45	+0.025/+0.125	50	30
HPP5-4550-50	45	+0.025/+0.125	50	50
HPP5-5055-30	50	+0.025/+0.125	55	30
HPP5-5055-40	50	+0.025/+0.125	55	40

订购编码 Order PN	d [mm]	d- 公差 After fitting [mm]	D [mm]	L(h13) [mm]
HPP5-5055-60	50	+0.025/+0.125	55	60
HPP5-5560-26	55	+0.030/+0.150	60	26
HPP5-5560-50	55	+0.030/+0.150	60	50
HPP5-6065-45	60	+0.030/+0.150	65	45
HPP5-6065-60	60	+0.030/+0.150	65	65
HPP5-6570-50	65	+0.030/+0.150	70	50
HPP5-7075-50	70	+0.030/+0.150	75	50
HPP5-7075-70	70	+0.030/+0.150	75	70
HPP5-7580-60	75	+0.030/+0.150	80	60

*d 公差为压入标准 H7 座孔 (ISO3547-1) 后公差

*Tolerance d: after being pressed into housing H7(ISO3547-1)

翻边轴套 Metric Flange Bushings



推荐安装公差 Recommend fitting tolerance:

座孔 Housing: H7

轴 Shaft: h9

订购编码 Order P/N:

HPP5 F-0304-05

d_1 d_2 L
 翻边轴套 Flange bushes
 材料 Material

d	f
1-6	0.2
6-12	0.3
12-30	0.4
>30	1.2

订购编码 Order PN	d ₁ [mm]	d ₁ - 公差 After fitting [mm]	d ₂ [mm]	d ₃ [d13] [mm]	L[h13] [mm]	t _{0.12} [mm]
HPP5F-0304-05	3	+0.006/+0.046	4.5	7.5	5	0.75
HPP5F-0405-04	4	+0.010/+0.058	5.5	9.5	4	0.75
HPP5F-0405-06	4	+0.010/+0.058	5.5	9.5	6	0.75
HPP5F-0507-05	5	+0.010/+0.058	7	11	5	1
HPP5F-0507-08	5	+0.010/+0.058	7	11	8	1
HPP5F-0608-04	6	+0.010/+0.058	8	12	4	1
HPP5F-0608-06	6	+0.010/+0.058	8	12	6	1
HPP5F-0608-08	6	+0.010/+0.058	8	12	8	1
HPP5F-0608-10	6	+0.010/+0.058	8	12	10	1
HPP5F-0810-05	8	+0.013/+0.071	10	15	5.5	1
HPP5F-0810-06	8	+0.013/+0.071	10	15	6	1
HPP5F-0810-07	8	+0.013/+0.071	10	15	7	1
HPP5F-0810-08	8	+0.013/+0.071	10	15	8	1
HPP5F-0810-09	8	+0.013/+0.071	10	15	9	1
HPP5F-0810-10	8	+0.013/+0.071	10	15	10	1
HPP5F-0810-15	8	+0.013/+0.071	10	15	15	1
HPP5F-0812-06	8	+0.025/+0.083	12	16	6	2
HPP5F-1012-04	10	+0.013/+0.071	12	18	4	1
HPP5F-1012-05	10	+0.013/+0.071	12	18	5	1

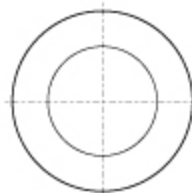
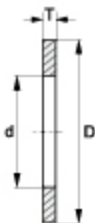
订购编码 Order PN	d ₁ [mm]	d ₁ - 公差 After fitting [mm]	d ₂ [mm]	d ₃ [d13] [mm]	L[h13] [mm]	t _{0.12} [mm]
HPP5F-1012-06	10	+0.013/+0.071	12	18	6	1
HPP5F-1012-08	10	+0.013/+0.071	12	18	8	1
HPP5F-1012-09	10	+0.013/+0.071	12	18	9	1
HPP5F-1012-10	10	+0.013/+0.071	12	18	10	1
HPP5F-1012-12	10	+0.013/+0.071	12	18	12	1
HPP5F-1012-15	10	+0.013/+0.071	12	18	15	1
HPP5F-1012-17	10	+0.013/+0.071	12	18	17	1
HPP5F-1012-20	10	+0.013/+0.071	12	18	20	1
HPP5F-1012-22	10	+0.013/+0.071	12	18	22	1
HPP5F-1012-25	10	+0.013/+0.071	12	18	25	1
HPP5F-1214-07	12	+0.016/+0.086	14	20	7	1
HPP5F-1214-09	12	+0.016/+0.086	14	20	9	1
HPP5F-1214-10	12	+0.016/+0.086	14	20	10	1
HPP5F-1214-12	12	+0.016/+0.086	14	20	12	1
HPP5F-1214-15	12	+0.016/+0.086	14	20	15	1
HPP5F-1214-20	12	+0.016/+0.086	14	20	20	1
HPP5F-1416-10	14	+0.016/+0.086	16	22	10	1
HPP5F-1416-12	14	+0.016/+0.086	16	22	12	1
HPP5F-1416-17	14	+0.016/+0.086	16	22	17	1

订购编码 Order PN	d_1 [mm]	d_1 -公差 After fitting [mm]	d_2 [mm]	d_2 [d13] [mm]	L[h13] [mm]	$t_{0.05}$ [mm]
HPP5F-1517-06	15	+0.016/+0.086	17	23	6	1
HPP5F-1517-12	15	+0.016/+0.086	17	23	12	1
HPP5F-1517-17	15	+0.016/+0.086	17	23	17	1
HPP5F-1618-10	16	+0.016/+0.086	18	24	10	1
HPP5F-1618-12	16	+0.016/+0.086	18	24	12	1
HPP5F-1618-13	16	+0.016/+0.086	18	24	13	1
HPP5F-1618-17	16	+0.016/+0.086	18	24	17	1
HPP5F-1618-25	16	+0.016/+0.086	18	24	25	1
HPP5F-1820-12	18	+0.016/+0.086	20	26	12	1
HPP5F-1820-17	18	+0.016/+0.086	20	26	17	1
HPP5F-2023-07	20	+0.020/+0.104	23	30	7	1.5
HPP5F-2023-11.5	20	+0.020/+0.104	23	30	11.5	1.5
HPP5F-2023-16.5	20	+0.020/+0.104	23	30	16.5	1.5
HPP5F-2023-21.5	20	+0.020/+0.104	23	30	21.5	1.5
HPP5F-2023-30	20	+0.020/+0.104	23	30	30	1.5
HPP5F-2528-13.5	25	+0.020/+0.104	28	35	13.5	1.5
HPP5F-2528-21.5	25	+0.020/+0.104	28	35	21.5	1.5
HPP5F-2528-30	25	+0.020/+0.104	28	35	30	1.5
HPP5F-3034-16	30	+0.020/+0.104	34	42	16	2

订购编码 Order PN	d_1 [mm]	d_1 -公差 After fitting [mm]	d_2 [mm]	d_2 [d13] [mm]	L[h13] [mm]	$t_{0.05}$ [mm]
HPP5F-3034-26	30	+0.020/+0.104	34	42	26	2
HPP5F-3034-40	30	+0.020/+0.104	34	42	40	2
HPP5F-3236-15	32	+0.025/+0.125	36	45	15	2
HPP5F-3236-26	32	+0.025/+0.125	36	45	26	2
HPP5F-3539-26	35	+0.025/+0.125	39	47	26	2
HPP5F-4044-22	40	+0.025/+0.125	44	52	22	2
HPP5F-4044-30	40	+0.025/+0.125	44	52	30	2
HPP5F-4044-40	40	+0.025/+0.125	44	52	40	2
HPP5F-4550-50	45	+0.025/+0.125	50	58	50	2
HPP5F-5055-40	50	+0.025/+0.125	55	63	40	2
HPP5F-5055-50	50	+0.025/+0.125	55	63	50	2
HPP5F-6065-40	60	+0.030/+0.150	65	75	40	2
HPP5F-6065-50	60	+0.030/+0.150	65	75	50	2
HPP5F-7075-40	70	+0.030/+0.150	75	83	40	2
HPP5F-7075-50	70	+0.030/+0.150	75	83	50	2
HPP5F-7580-50	75	+0.030/+0.150	80	88	50	2

* d_1 公差为压入标准 H7 座孔 (ISO3547-1) 后公差*Tolerance d_2 : after being pressed into housing H7 (ISO3547-1)

垫片 Metric Thrust Washers



订购编码 Order PN:

HPP5 W-0509-006

	d	D	T	

垫片 Washer

材料 Material

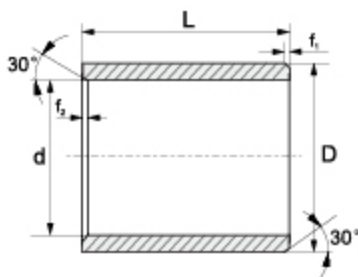
订购编码 Order PN	$d^{0.25}$ [mm]	$D_{0.25}$ [mm]	$T_{0.05}$ [mm]
HPP5W-0509-006	5	9	0.6
HPP5W-0615-015	6	15	1.5
HPP5W-0620-015	6	20	1.5
HPP5W-0815-005	8	15	0.5
HPP5W-0815-015	8	15	1.5
HPP5W-0818-010	8	18	1.0
HPP5W-0818-015	8	18	1.5
HPP5W-1018-010	10	18	1.0
HPP5W-1018-015	10	18	1.5
HPP5W-1018-020	10	18	2.0
HPP5W-1224-015	12	24	1.5
HPP5W-1426-015	14	26	1.5
HPP5W-1524-015	15	24	1.5
HPP5W-1630-015	16	30	1.5

订购编码 Order PN	$d^{0.25}$ [mm]	$D_{0.25}$ [mm]	$T_{0.05}$ [mm]
HPP5W-1832-015	18	32	1.5
HPP5W-2036-015	20	36	1.5
HPP5W-2238-015	22	38	1.5
HPP5W-2442-015	24	42	1.5
HPP5W-2640-0075	26	40	0.75
HPP5W-2644-015	26	44	1.5
HPP5W-2848-015	28	48	1.5
HPP5W-3254-015	32	54	1.5
HPP5W-3862-015	38	62	1.5
HPP5W-4266-015	42	66	1.5
HPP5W-4874-020	48	74	2.0
HPP5W-5278-020	52	78	2.0
HPP5W-6290-020	62	90	2.0

* 根据要求提供定位孔设计 The fixing bore design upon request

HPP4\HPP6\HPP18\HPP20\HPP28\HPP29 标准规格 Standard

直套 Metric Cylindrical Bushings



推荐安装公差 Recommend fitting tolerance:

座孔 Housing: H7

轴 Shaft: h9

订购编码 Order P/N:

HPP4-0304-03

d D L

材料 Material

d	t	t
1-6	0.3	0.5
6-12	0.5	
12-20	0.8	
>20	1.2	

订购编码 Order PN	d [mm]	d-公差 After fitting [mm]	D [mm]	L(h13) [mm]
HPP4-0304-03	3	+0.014/+0.054	4.5	3
HPP4-0304-05	3	+0.014/+0.054	4.5	5
HPP4-0304-06	3	+0.014/+0.054	4.5	6
HPP4-0405-04	4	+0.02/+0.068	5.5	4
HPP4-0405-06	4	+0.02/+0.068	5.5	6
HPP4-0405-08	4	+0.02/+0.068	5.5	8
HPP4-0405-10	4	+0.02/+0.068	5.5	10
HPP4-0507-05	5	+0.02/+0.068	7	5
HPP4-0507-08	5	+0.02/+0.068	7	8
HPP4-0507-10	5	+0.02/+0.068	7	10
HPP4-0608-06	6	+0.02/+0.068	8	6
HPP4-0608-08	6	+0.02/+0.068	8	8
HPP4-0608-09	6	+0.02/+0.068	8	9
HPP4-0608-10	6	+0.02/+0.068	8	10
HPP4-0608-11	6	+0.02/+0.068	8	11
HPP4-0810-06	8	+0.025/+0.083	10	6
HPP4-0810-08	8	+0.025/+0.083	10	8
HPP4-0810-10	8	+0.025/+0.083	10	10
HPP4-0810-12	8	+0.025/+0.083	10	12
HPP4-0810-13	8	+0.025/+0.083	10	13
HPP4-0810-15	8	+0.025/+0.083	10	15
HPP4-0810-21	8	+0.025/+0.083	10	21
HPP4-1012-04	10	+0.025/+0.083	12	4
HPP4-1012-06	10	+0.025/+0.083	12	6
HPP4-1012-08	10	+0.025/+0.083	12	8
HPP4-1012-10	10	+0.025/+0.083	12	10
HPP4-1012-12	10	+0.025/+0.083	12	12
HPP4-1012-20	10	+0.025/+0.083	12	20
HPP4-1214-05	12	+0.032/+0.102	14	5
HPP4-1214-06	12	+0.032/+0.102	14	6
HPP4-1214-10	12	+0.032/+0.102	14	10
HPP4-1214-12	12	+0.032/+0.102	14	12
HPP4-1214-15	12	+0.032/+0.102	14	15
HPP4-1214-20	12	+0.032/+0.102	14	20
HPP4-1214-25	12	+0.032/+0.102	14	25
HPP4-1416-10	14	+0.032/+0.102	16	10
HPP4-1416-15	14	+0.032/+0.102	16	15

订购编码 Order PN	d [mm]	d-公差 After fitting [mm]	D [mm]	L(h13) [mm]
HPP4-1416-20	14	+0.032/+0.102	16	20
HPP4-1416-25	14	+0.032/+0.102	16	25
HPP4-1517-10	15	+0.032/+0.102	17	10
HPP4-1517-20	15	+0.032/+0.102	17	20
HPP4-1517-25	15	+0.032/+0.102	17	25
HPP4-1618-08	16	+0.032/+0.102	18	8
HPP4-1618-15	16	+0.032/+0.102	18	15
HPP4-1618-20	16	+0.032/+0.102	18	20
HPP4-1618-25	16	+0.032/+0.102	18	25
HPP4-1820-20	18	+0.032/+0.102	20	20
HPP4-2022-15	20	+0.04/+0.124	22	15
HPP4-2023-10	20	+0.04/+0.124	23	10
HPP4-2023-15	20	+0.04/+0.124	23	15
HPP4-2023-20	20	+0.04/+0.124	23	20
HPP4-2023-23	20	+0.04/+0.124	23	23
HPP4-2023-30	20	+0.04/+0.124	23	30
HPP4-2225-15	22	+0.04/+0.124	25	15
HPP4-2225-20	22	+0.04/+0.124	25	20
HPP4-2225-25	22	+0.04/+0.124	25	25
HPP4-2225-30	22	+0.04/+0.124	25	30
HPP4-2528-12	25	+0.04/+0.124	28	12
HPP4-2528-20	25	+0.04/+0.124	28	20
HPP4-2528-25	25	+0.04/+0.124	28	25
HPP4-2528-30	25	+0.04/+0.124	28	30
HPP4-2832-20	28	+0.04/+0.124	32	20
HPP4-2832-25	28	+0.04/+0.124	32	25
HPP4-2832-30	28	+0.04/+0.124	32	30
HPP4-3034-20	30	+0.04/+0.124	34	20
HPP4-3034-25	30	+0.04/+0.124	34	25
HPP4-3034-30	30	+0.04/+0.124	34	30
HPP4-3034-40	30	+0.04/+0.124	34	40
HPP4-3236-20	32	+0.05/+0.15	36	20
HPP4-3236-30	32	+0.05/+0.15	36	30
HPP4-3236-40	32	+0.05/+0.15	36	40
HPP4-3539-20	35	+0.05/+0.15	39	20
HPP4-3539-30	35	+0.05/+0.15	39	30
HPP4-3539-40	35	+0.05/+0.15	39	40

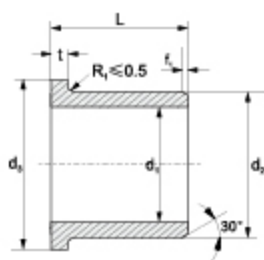
订购编码 Order PN	d [mm]	d- 公差 After fitting [mm]	D [mm]	L(h13) [mm]
HPP4-3539-50	35	+0.05/+0.15	39	50
HPP4-4044-20	40	+0.05/+0.15	44	20
HPP4-4044-30	40	+0.05/+0.15	44	30
HPP4-4044-40	40	+0.05/+0.15	44	40
HPP4-4044-50	40	+0.05/+0.15	44	50

订购编码 Order PN	d [mm]	d- 公差 After fitting [mm]	D [mm]	L(h13) [mm]
HPP4-5055-40	50	+0.05/+0.15	55	40
HPP4-5055-50	50	+0.05/+0.15	55	50

*d 公差为压入标准 H7 座孔 (ISO3547-1) 后公差

*Tolerance d: after being pressed into housing H7(ISO3547-1)

翻边轴套 Metric Flange Bushings



推荐安装公差 Recommend fitting tolerance:

座孔, Housing: H7

轴 Shaft: h9

订购编码 Order P/N:

HPP4 F-0304-03

d	f
1-6	0.3
6-12	0.5
12-20	0.8
>20	1.2

d_1 d_2 L
 翻边轴套 Flange bushes
 材料 Material

订购编码 Order PN	d ₁ [mm]	d ₁ - 公差 After fitting [mm]	d ₂ [mm]	d ₂ [d13] [mm]	L[h13] [mm]	t _{0.16} [mm]
HPP4F-0304-03	3	+0.014/+0.054	4.5	7.5	3	0.75
HPP4F-0304-05	3	+0.014/+0.054	4.5	7.5	5	0.75
HPP4F-0405-03	4	+0.02/+0.068	5.5	9.5	3	0.75
HPP4F-0405-04	4	+0.02/+0.068	5.5	9.5	4	0.75
HPP4F-0405-06	4	+0.02/+0.068	5.5	9.5	6	0.75
HPP4F-0506-15	5	+0.02/+0.068	6	10	15	0.5
HPP4F-0507-04	5	+0.02/+0.068	7	11	4	1
HPP4F-0507-05	5	+0.02/+0.068	7	11	5	1
HPP4F-0507-10	5	+0.02/+0.068	7	11	10	1
HPP4F-0608-04	6	+0.02/+0.068	8	12	4	1
HPP4F-0608-06	6	+0.02/+0.068	8	12	6	1
HPP4F-0608-08	6	+0.02/+0.068	8	12	8	1
HPP4F-0608-10	6	+0.02/+0.068	8	12	10	1
HPP4F-0810-04	8	+0.025/+0.083	10	15	4	1
HPP4F-0810-05	8	+0.025/+0.083	10	15	5	1
HPP4F-0810-07	8	+0.025/+0.083	10	15	7	1
HPP4F-0810-08F2.5	8	+0.025/+0.083	10	15	8	2.5
HPP4F-0810-09	8	+0.025/+0.083	10	15	9	1
HPP4F-0810-10	8	+0.025/+0.083	10	15	10	1
HPP4F-0810-30	8	+0.025/+0.083	10	15	30	1
HPP4F-1012-06	10	+0.025/+0.083	12	18	6	1
HPP4F-1012-07	10	+0.025/+0.083	12	18	7	1
HPP4F-1012-10	10	+0.025/+0.083	12	18	10	1
HPP4F-1012-12	10	+0.025/+0.083	12	18	12	1
HPP4F-1012-15	10	+0.025/+0.083	12	18	15	1
HPP4F-1012-17	10	+0.025/+0.083	12	18	17	1

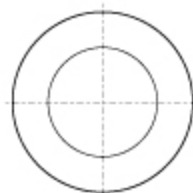
订购编码 Order PN	d ₁ [mm]	d ₁ - 公差 After fitting [mm]	d ₂ [mm]	d ₂ [d13] [mm]	L[h13] [mm]	t _{0.16} [mm]
HPP4F-1214-04	12	+0.032/+0.102	14	18	4	1
HPP4F-1214-07	12	+0.032/+0.102	14	20	7	1
HPP4F-1214-09	12	+0.032/+0.102	14	20	9	1
HPP4F-1214-10	12	+0.032/+0.102	14	20	10	1
HPP4F-1214-11	12	+0.032/+0.102	14	20	11	1
HPP4F-1214-12	12	+0.033/+0.102	14	20	12	1
HPP4F-1214-15	12	+0.032/+0.102	14	20	15	1
HPP4F-1214-17	12	+0.032/+0.102	14	20	17	1
HPP4F-1214-20	12	+0.032/+0.102	14	20	20	1
HPP4F-1416-12	14	+0.032/+0.102	16	22	12	1
HPP4F-1416-17	14	+0.032/+0.102	16	22	17	1
HPP4F-1517-12	15	+0.032/+0.102	17	23	12	1
HPP4F-1517-17	15	+0.032/+0.102	17	23	17	1
HPP4F-1517-20	15	+0.032/+0.102	17	23	20	1
HPP4F-1618-09	16	+0.032/+0.102	18	24	9	1
HPP4F-1618-12	16	+0.032/+0.102	18	24	12	1
HPP4F-1618-17	16	+0.032/+0.102	18	24	17	1
HPP4F-1820-17	18	+0.032/+0.102	20	26	17	1
HPP4F-1820-22	18	+0.032/+0.102	20	26	22	1
HPP4F-2023-11.5	20	+0.04/+0.124	23	30	11.5	1.5
HPP4F-2023-16.5	20	+0.04/+0.124	23	30	16.5	1.5
HPP4F-2023-21.5	20	+0.04/+0.124	23	30	21.5	1.5
HPP4F-2528-11.5	25	+0.04/+0.124	28	35	11.5	1.5
HPP4F-2528-16.5	25	+0.04/+0.124	28	35	16.5	1.5
HPP4F-2528-21.5	25	+0.04/+0.124	28	35	21.5	1.5
HPP4F-3034-16	30	+0.04/+0.124	34	42	16	2

订购编码 Order PN	d ₁ [mm]	d ₁ -公差 After fitting [mm]	d ₂ [mm]	d ₂ [d13] [mm]	L[h13] [mm]	t _{0.12} [mm]
HPP4F-3034-26	30	+0.04/+0.124	34	42	26	2
HPP4F-3034-37	30	+0.04/+0.124	34	42	37	2
HPP4F-3236-16	32	+0.05/+0.15	36	40	16	2
HPP4F-3236-26	32	+0.05/+0.15	36	40	26	2
HPP4F-3539-09	35	+0.05/+0.15	39	47	9	2
HPP4F-3539-16	35	+0.05/+0.15	39	47	16	2
HPP4F-3539-26	35	+0.05/+0.15	39	47	26	2

订购编码 Order PN	d ₁ [mm]	d ₁ -公差 After fitting [mm]	d ₂ [mm]	d ₂ [d13] [mm]	L[h13] [mm]	t _{0.12} [mm]
HPP4F-4044-30	40	+0.05/+0.15	44	52	30	2
HPP4F-4550-50	45	+0.05/+0.15	50	58	50	2
HPP4F-5055-40	50	+0.05/+0.15	55	63	40	2

*d₁ 公差为压入标准 H7 座孔 (ISO3547-1) 后公差*Tolerance d₁: after being pressed into housing H7 (ISO3547-1)

垫片 Metric Thrust Washers



订购编码 Order PN:

HPP4 W-0509-006

材料 Material

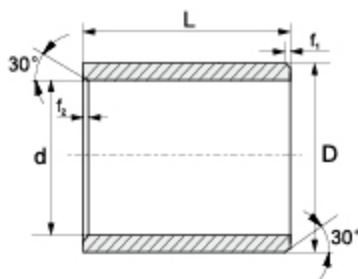
订购编码 Order PN	d ^{+0.25} [mm]	D _{0.25} [mm]	T _{0.05} [mm]
HPP4W-0509-006	5	9	0.6
HPP4W-0615-015	6	15	1.5
HPP4W-0620-015	6	20	1.5
HPP4W-0815-005	8	15	0.5
HPP4W-0815-015	8	15	1.5
HPP4W-0818-005	8	18	0.5
HPP4W-0818-010	8	18	1.0
HPP4W-0818-015	8	18	1.5
HPP4W-1018-010	10	18	1.0
HPP4W-1018-015	10	18	1.5
HPP4W-1018-020	10	18	2.0
HPP4W-1224-012	12	24	1.2
HPP4W-1224-015	12	24	1.5
HPP4W-1426-015	14	26	1.5
HPP4W-1524-015	15	24	1.5

订购编码 Order PN	d ^{+0.25} [mm]	D _{0.25} [mm]	T _{0.05} [mm]
HPP4W-1630-015	16	30	1.5
HPP4W-1832-015	18	32	1.5
HPP4W-2032-010	20	32	1.0
HPP4W-2036-015	20	36	1.5
HPP4W-2238-015	22	38	1.5
HPP4W-2442-015	24	42	1.5
HPP4W-2644-015	26	44	1.5
HPP4W-2848-015	28	48	1.5
HPP4W-3254-015	32	54	1.5
HPP4W-3862-015	38	62	1.5
HPP4W-4266-015	42	66	1.5
HPP4W-4874-020	48	74	2.0
HPP4W-5278-020	52	78	2.0
HPP4W-6290-020	62	90	2.0

* 根据要求提供定位孔设计 The fixing bore design upon request

HPP9\HPP27\HPP33\HPP34 标准规格 Standard

直套 Metric Cylindrical Bushings



推荐安装公差 Recommend fitting tolerance:

座孔 Housing: H7

轴 Shaft: h9

订购编码 Order P/N:

HPP34-0508-06

— | — | — | —
 d D L

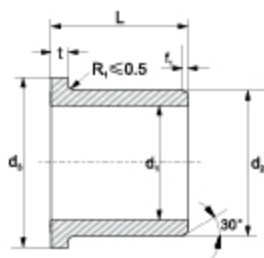
材料 Material

d	f ₁	f ₂
1-6	0.3	0.5
6-12	0.5	
12-20	0.8	
>20	1.2	

订购编码 Order PN	d [mm]	d 公差 Tolerance	D [mm]	L(h13) [mm]
HPP34-0508-06	5	+0.030/+0.105	8	6
HPP34-0609-08	6	+0.030/+0.105	9	8
HPP34-0812-08	8	+0.040/+0.130	12	8
HPP34-1014-10	10	+0.040/+0.130	14	10
HPP34-1216-10	12	+0.050/+0.160	16	10
HPP34-1521-15	15	+0.050/+0.160	21	15
HPP34-1622-15	16	+0.050/+0.160	22	15
HPP34-1824-20	18	+0.050/+0.160	24	20
HPP34-2026-20	20	+0.065/+0.195	26	20
HPP34-2228-20	22	+0.065/+0.195	28	20
HPP34-2530-25	25	+0.065/+0.195	30	25
HPP34-2532-30	25	+0.065/+0.195	32	30
HPP34-2834-30	28	+0.065/+0.195	34	30
HPP34-2836-30	28	+0.065/+0.195	36	30
HPP34-3036-30	30	+0.065/+0.195	36	30
HPP34-3038-30	30	+0.065/+0.195	38	30
HPP343240-30	32	+0.080/+0.240	40	30
HPP34-3543-35	35	+0.080/+0.240	43	35
HPP34-3545-40	35	+0.080/+0.240	45	40
EP814-4048-40	40	+0.080/+0.240	48	40
HPP34-4050-40	40	+0.080/+0.240	50	40
HPP34-4553-50	45	+0.080/+0.240	53	50
HPP34-4555-40	45	+0.080/+0.240	55	40
HPP34-5060-50	50	+0.080/+0.240	60	50

*d₁ 公差为压入标准 H7 座孔 (ISO3547-1) 后公差 *Tolerance d₁: after being pressed into housing H7 (ISO3547-1)

翻边轴套 Metric Flange Bushings



推荐安装公差 Recommend fitting tolerance:

座孔 Housing: H7

轴 Shaft: h9

订购编码 Order P/N:

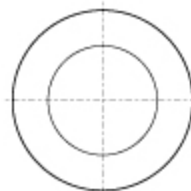
HPP34 F-0508-08

— | — | — | —
 d₁ d₂ L
 翻边轴套 Flange bushes
 材料 Material

d	f
1-6	0.3
6-12	0.5
12-20	0.8
>20	1.2

订购编码 Order PN	d ₁ [mm]	d ₁ 公差 Tolerance	d ₂ [mm]	d ₂ (d13) [mm]	L(h13) [mm]	t(h13)[mm]
HPP34F-0508-08	5	+0.030/+0.105	8	11	8	1.5
HPP34F-0609-08	6	+0.030/+0.105	9	12	8	2
HPP34F-0812-10	8	+0.040/+0.130	12	16	10	2
HPP34F-1014-15	10	+0.040/+0.130	14	18	15	2
HPP34F-1216-15	12	+0.050/+0.160	16	20	15	2
HPP34F-1521-20	15	+0.050/+0.160	21	27	20	3
HPP34F-1622-20	16	+0.050/+0.160	22	28	20	3
HPP34F-1824-20	18	+0.050/+0.160	24	30	20	3
HPP34F-2026-25	20	+0.065/+0.195	26	32	25	3
HPP34F-2228-25	22	+0.065/+0.195	28	34	25	3
HPP34F-2530-30	25	+0.065/+0.195	30	37	30	3
HPP34F-2532-30	25	+0.065/+0.195	32	38	30	4
HPP34F-2834-30	28	+0.065/+0.195	34	40	30	3
HPP34F-2836-30	28	+0.065/+0.195	36	42	30	4
HPP34F-3036-35	30	+0.065/+0.195	36	42	35	3
HPP34F-3038-30	30	+0.065/+0.195	38	44	30	4
EP814F-3240-35	32	+0.080/+0.240	40	48	35	4
HPP34F-3543-40	35	+0.080/+0.240	43	51	40	4
HPP34F-3545-40	35	+0.080/+0.240	45	50	40	5
HPP34F-4048-45	40	+0.080/+0.240	48	56	45	4
EP814F-4050-40	40	+0.080/+0.240	50	56	40	5
HPP34F-4553-50	45	+0.080/+0.240	53	61	50	4
HPP34F-4555-40	45	+0.080/+0.240	55	63	40	5
HPP34F-5060-50	50	+0.080/+0.240	60	70	50	5

垫片 Metric Thrust Washers



订购编码 Order PN:

HPP34 W-0613-008

材料 Material

订购编码 Order PN	d ^{0.25} [mm]	D _{0.25} [mm]	T _{0.25} [mm]
HPP34W-0613-008	6	13	0.8
HPP34W-0815-008	8	15	0.8
HPP34W-1020-008	10	20	0.8
HPP34W-1225-008	12	25	0.8
HPP34W-1530-008	15	30	0.8
HPP34W-2040-008	20	40	0.8
HPP34W-2245-008	22	45	0.8
HPP34W-2550-008	25	50	0.8

订购编码 Order PN	d ^{0.25} [mm]	D _{0.25} [mm]	T _{0.25} [mm]
HPP34W-2855-008	28	55	0.8
HPP34W-3060-008	30	60	0.8
HPP34W-3260-008	32	60	0.8
HPP34W-3565-008	35	65	0.8
HPP34W-4070-008	40	70	0.8
HPP34W-4575-008	45	75	0.8
HPP34W-5080-008	50	80	0.8

* 根据要求提供定位孔设计 The fixing bore design upon request

纤维缠绕轴承 Filament-wound bearings

产品特性 Product Features:

高承载量、优秀的抗冲击性、抗不同轴度、高的表面速度、好的抗污染性、摩擦系数、耐磨损、好的化学抗性。

High load capacity, excellent impact resistance, anti-coaxiality, high surface speed, good anti-pollution, friction coefficient, abrasion resistance, good chemical resistance.



XWM 通用型轴承 XWM universal bearings



内衬: PTFE 纤维 + 中等强度纤维 + 润滑剂
衬背: 玻璃纤维和增强高温环氧树脂

Lining: PTFE fiber + medium strength fiber + lubricant
Backing: Glass fiber and reinforced high temperature epoxy

XWP 高速型轴承 XWP high-speed bearings



内衬: PTFE 填充物 + 金属粉末
衬背: 高强度玻璃纤维和增强高温环氧树脂

Lining: PTFE filler + metal powder
Backing: High-strength glass fiber and reinforced high-temperature epoxy resin

XWB 标准型轴承 XWB standard bearings



内衬: PTFE 纤维 + 中等强度纤维 + 润滑剂
衬背: 玻璃纤维和增强高温环氧树脂

Lining: PTFE fiber + medium strength fiber + lubricant
Backing: Glass fiber and reinforced high temperature epoxy

纤维缠绕轴承 Filament-wound bearings

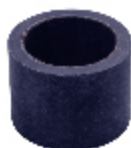
XWW 水下型轴承 XWW underwater bearings



内衬: PTFE 纤维 + 中等强度纤维 + 水下润滑剂
衬背: 高强度玻璃纤维和增强高温环氧树脂

Lining: PTFE fiber + medium strength fiber + underwater lubricant
Backing: High-strength glass fiber and reinforced high-temperature epoxy resin

XWG 高承载轴承 XWG high load bearing



内衬: PTFE 纤维 + 中等强度纤维 + 润滑剂
衬背: 高强度玻璃纤维和增强高温环氧树脂

Lining: PTFE fiber + medium strength fiber + lubricant
Backing: High-strength glass fiber and reinforced high-temperature epoxy resin

XWF 多用型轴承 XWF multi-purpose bearings



特种高强酚醛树脂 + 高强度纤维 + 专用润滑剂

Special high-strength phenolic resin + high-strength fiber + special lubricants

客户化的定产品 Customized products

产品特性 Product Features:

标准规格常备库存、设计巧妙、可提供专业的选材开模服务和半成品加工等。

Standing stock of standard specifications, clever design, can provide professional selection of mold opening services and semi-finished products processing.



KGD 系列卡箍轴承

KGD series of clamp bearings



应用于薄板
 双法兰设计
 对安装孔精度要求低
 免维护、自润滑

In thin plate
 Double flange design
 Low accuracy of mounting hole
 No maintenance, self-lubrication

KGS 系列薄壁轴承

KGS series of thin-walled bearings



补偿材料膨胀
 开槽设计、易于安装
 对安装孔精度要求低
 材料可选择：HPP2 和 HPP4

Compensation material expansion
 Open slot design, easy installation
 Low accuracy of mounting hole
 Materials
 can be selected: HPP2 and HPP4

DH 系列板簧

DH series leaf spring



吸震和降低噪音
 补偿轴向间隙和误差
 材料可选择：HPP3 HPP5 和 HPP20

Shock and reduce noise
 Compensate for axial clearance and error
 Materials available: HPP3 HPP5 and HPP20

客户化的定产品 Customized products

FLB 系列法兰轴承

FLB series flange bearings



安全的螺栓固定
对安装孔精度无要求
材料可选择：
HPP1、HPP3、HPP5 和 HPP20

Safety bolts are fixed
No requirement for mounting hole accuracy
Material optional:
HPP1, HPP3, HPP5 and HPP20

HSH 系列活塞环

HSH series piston ring

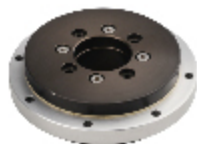


安装简单
耐腐蚀、质量轻
低免维护、自润滑
比 PTFE 制作的活塞环更耐磨

Simple installation
Corrosion resistant and lightweight
No maintenance, self-lubrication
More durable than PTFE's piston rings

HZB-01 高速回转支撑轴承

HZB-01 high-speed slewing bearings

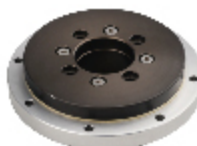


免维护、自润滑
滑动与滚动的组合
内部采用角接触滚动轴承
摩擦片采用 HPP4 材料

Maintenance-free, self-lubricating
Combination of moving and rolling
Internal angular contact with rolling bearings
Friction plate with HPP4 material

HZB-03 回转支撑轴承

HZB-03 slewing ring bearings



内外环采用铝合金
表面经过硬质氧化
摩擦片采用 HPP4 材料
可选不锈钢材料

Aluminum alloy for inner and outer ring
The surface is hard oxidized
HPP4 materials are used in friction tablets
Optional stainless steel material

客户化的定制产品 Customized products

转向器支撑轴承

Steering support bearing



抗冲击、高弹性
耐磨损、开口设计方便安装
为汽车转向器定制开发的支撑轴承

Shock, high elasticity
Wear-resistant, open design for easy installation
Custom bearings developed for automotive steering gear

自润滑回转链条

Car steering gear support sleeve



自润滑、抗冲击、
抗灰尘噪音低、
长使用寿命

Self-lubricating, impact-resistant, anti-dust low noise, long service life

客户化的其它定制产品 Other customized products



棒材 / 板材 Bar / board

产品特性 Product Features :

工程塑料半成品, 标准规格常备库存。可满足少量零件对高性能材料的需求; 针对需要开模的产品可根据不同工况选择相应材料, 按图迅速加工制作试样, 避免前期模具的投入, 节约成本。

Semi-finished plastic products. According to different conditions, select the appropriate material, according to the rapid processing of production drawings



HPP0



∅ 15 ~ ∅ 45
∅ 50 和 ∅ 60

HPP3



∅ 15 ~ ∅ 45

HPP4



∅ 15 ~ ∅ 45
∅ 50 和 ∅ 60

HPP5



∅ 15 ~ ∅ 45
∅ 50 和 ∅ 60

HPP20



∅ 15 ~ ∅ 45
∅ 50 和 ∅ 60

LT81



∅ 15 ~ ∅ 45
∅ 50 和 ∅ 60

HPP24



∅ 15 ~ ∅ 45
∅ 50 和 ∅ 60

HPP4



厚度 10mm - 30mm

MB81



厚度 10mm - 30mm

GB 系列关节轴承 Plastic spherical bearings

产品特性 Product Features:

免维护、自润滑、抗粉层和脏污、耐腐蚀、减震性好、可用于液体中、重量轻等。

Maintenance-free, self-lubricating, anti-powder layer and dirty, corrosion-resistant, shock absorption, can be used in liquids, light weight and so on.



GB-01 基座关节轴承

GB-01 pillow block spherical bearings



- 重量轻
- 良好的减震性
- 免维护，干运行
- 高强度，抗冲击载荷
- 耐腐蚀性以及耐化学性
- 补偿的对中误差和边缘负荷

- Light weight
- Good shock absorption
- Maintenance-free, dry operation
- High strength, impact load
- Corrosion resistance has been chemical resistance
- Compensation centering error and edge load

GB-02 基座关节轴承

GB-02 pillow block spherical bearings



- 免维护，自润滑
- 节省空间的设计
- 使用寿命可预测性

- Maintenance-free, self-lubricating
- Space-saving design
- Service life predictability

GB-03 法兰关节轴承

GB-03 flange spherical bearings



- 重量轻
- 抗拉强度高
- 高疲劳强度
- 补偿对中误差
- 补偿边缘载荷
- 免维护，干运行

- Light weight
- Tensile strength is good
- High fatigue strength
- Compensate the alignment error
- Compensation edge load
- Maintenance-free, dry operation

GB 系列关节轴承 Plastic spherical bearings

GB-04 法兰关节轴承

GB-04 flange spherical bearings



- 耐腐蚀
- 重量轻
- 易于装配
- 补偿对中误差
- 免维护、干运行
- 球体由高耐磨性材料 HPP4 制成

- Corrosion-resistant
- light weight
- Easy to assemble
- Compensate the alignment error
- Maintenance-free, dry operation
- The ball is made of high-wear material HPP4

GB-05 塑料角支轴承

GB-5 Plastic Spherical bearings



- 耐腐蚀
- 高耐湿性
- 优异的减震性
- 对中误差和边缘负荷补偿
- 适合于旋转、摆动和直线运动

- Corrosion resistant
- The high wet resistance
- Excellent shock absorption
- Compensation for medium and edge loads
- Suitable for rotation, swing and linear motion

BL 标准塑料球体

BL standard plastic balls



- 耐腐蚀
- 高弹性
- 重量轻
- 不同材料
- 高抗压强度
- 免维护，自润滑

- Corrosion-resistant
- High elasticity
- Light weight
- Different materials
- High compressive strength
- Maintenance-free, self-lubricating

GDB 双杆端关节轴承

GDB Double Spherical Bearings



- 自润滑、免维护
- 多种连接长度选择
- 无噪音运行和不导电
- 耐腐蚀，可用于液体介质环境
- 可连接两个单元组件并消除中心误差

- Self-lubricating, non-maintenance
- Multiple connection length options
- Noiseless running and non-conducting
- Corrosion resistant, can be used in liquid medium environment
- Can connect two unit components and eliminate the central error

GB 系列关节轴承 Plastic spherical bearings

	<p>GDB-F/GDB-R 双杆端关节轴承</p> <ul style="list-style-type: none"> ● 多种角度调节 ● 多种长度选择 ● 自润滑、免维护 ● 无噪音和易安装 ● 球体采用高耐磨材料 HPP28 制成 	<p>GDB-F/GDB-R Double Spherical Bearings</p> <ul style="list-style-type: none"> ● Variable angle between two components ● Variable distance between two components ● Maintenance-free dry operation ● No noise and easy installation ● Spherical ball made of highly wearresistant HPP28
	<p>GOB 杆端关节轴承，外螺</p> <ul style="list-style-type: none"> ● 补偿心中误差 ● 无噪音、重量轻 ● 自润滑、免维护 ● 光面设计耐灰尘 ● 很好的耐腐蚀性能 ● 球体采用高耐磨材料 HPP28 制成 	<p>GOB Rod End Bearings, Male Thread</p> <ul style="list-style-type: none"> ● Compensation of misalignment errors ● No noise and light weight ● Maintenance-free dry operation ● Smooth design has no dirt traps ● Absolute corrosion resistance ● Spherical ball made of highly wearresistant HPP28
	<p>GIB 杆端关节轴承、内螺纹</p> <ul style="list-style-type: none"> ● 补偿心中误差 ● 自润滑、免维护 ● 光面设计耐灰尘 ● 很好的耐腐蚀性能 ● 无噪音、重量轻 	<p>GIB Rod End Bearings, Female Thread</p> <ul style="list-style-type: none"> ● Compensation of misalignment errors ● Maintenance-free dry operation ● Smooth design has no dirt traps ● Absolute corrosion resistance ● No noise and light weight

塑料滚珠及陶瓷滚动轴承 Plastic ball and ceramic roller bearings

产品特性 Product Features :

免润滑、耐腐蚀、耐磨损、耐灰尘和污垢、摩擦系数小、运行极安静、重量轻。

Non-lubricated, corrosion-resistant, wear-resistant, dust and dirt-resistant, low coefficient of friction, very quiet operation, light weight.



BP-01 精密塑料滚动轴承

BP-01 precision plastic rolling bearings



内圈外圈：POM 或 PA
保持架：玻璃纤维增强 PA66
滚珠：玻璃、不锈钢或陶瓷

Inner ring outer ring: POM or PA
Cage: Glass fiber reinforced PA66
Ball: glass, stainless steel or ceramic

耐碱、不耐酸性腐蚀和强氧化剂

Alkali, acid corrosion resistance and strong oxidants

BP-02 耐腐蚀塑料滚动轴承

BP-02 corrosion-resistant plastic roller bearings



内圈外圈：PTFE 或 PVDF
保持架：PTFE 或 PVDF
滚珠：玻璃或陶瓷

Inner ring: PTFE or PVDF
Cages: PTFE or PVDF
Ball: glass or ceramic

浓酸、浓碱和高温场所

Concentrated acid, concentrated alkali and high temperature places

BP-03 耐酸碱塑料滚动轴承

BP-03 acid-resistant plastic roller bearings



内圈外圈：HDPE、PP 或 UPE
保持架：HDPE、PP 或 UPE
滚珠：玻璃、陶瓷或不锈钢

Inner ring: HDPE, PP or UPE
Cages: HDPE, PP or UPE
Ball: glass, ceramic or stainless steel

适用较弱的酸碱交叉环境；不适用于较大负荷和较高转速

Applicable to the weak acid-base cross-environment; not suitable for larger loads and higher speed

塑料滚珠及陶瓷滚动轴承 Plastic ball and ceramic roller bearings

BP-04 耐高温塑料滚动轴承

BP-04 high temperature plastic roller bearings



内圈外圈：PEEK 或 PI
保持架：PEEK 或 PI

Inner ring outer ring: PEEK or PI
Cage: PEEK or PI

滚珠：氧化锆和氮化硅陶瓷耐高温和腐蚀

Balls: Zirconia and silicon nitride ceramics withstand high temperatures and corrosion

BT-01 氧化锆全陶瓷轴承

BT-01 zirconia ceramic bearings



内圈外圈：氧化锆 (ZrO₂)
保持架：PTFE、PEEK、PI、不锈钢、黄铜等

Inner ring outer ring: Zirconia (ZrO₂)
Cages: PTFE, PEEK, PI, stainless steel, brass, etc.

滚珠：氧化锆 (ZrO₂)
抗磁、电绝缘、耐高温腐蚀、耐高温高寒等

Ball: Zirconia (ZrO₂)
Anti-magnetic, electrical insulation, high temperature corrosion, such as high temperature and cold

BT-02 氮化硅全陶瓷轴承

BT-02 silicon nitride ceramic bearings



内圈外圈：氮化硅 (Si₃N₄)
保持架：PTFE、PEEK、PI 等

Inner ring outer ring: Silicon nitride (Si₃N₄)
Cages: PTFE, PEEK, PI, etc.

滚珠：氮化硅 (Si₃N₄)
精度高、更高转速和负荷

Ball: Silicon nitride (Si₃N₄)
High precision, higher speed and load

BT-03 碳化硅全陶瓷轴承

BT-03 silicon carbide ceramic bearings



内圈外圈：碳化硅 (SiC)
保持架：PTFE

Inner ring outer ring: Silicon carbide (SiC)
Cage: PTFE

滚珠：碳化硅 (SiC)
兼具陶瓷各优点、适用于更苛刻的腐蚀性环境

Ball: Silicon Carbide (SiC)
Both ceramic advantages, for more demanding corrosive environment

BT-04 混合陶瓷轴承

BT-04 hybrid ceramic bearings



内圈外圈：轴承钢 (GCr15) 或不锈钢 (AISI440C、304、316)
保持架：不锈钢 (AISI440C、304、316)

Inner ring outer ring: Bearing steel (GCr15) or stainless steel (AISI440C, 304,316)
Cage: Stainless steel (AISI440C, 304,316)

滚珠：碳化硅 (SiC)、氮化硅 (Si₃N₄)、氧化锆 (ZrO₂) 兼具陶瓷各优点、载荷更大

Ball: silicon carbide (SiC), silicon nitride (Si₃N₄), zirconia (ZrO₂) both the advantages of ceramic, more load

直线轴承和轴端支撑 Linear bearings and shaft ends support

产品特性 Product Features

LAP linear bearing with high loading capability



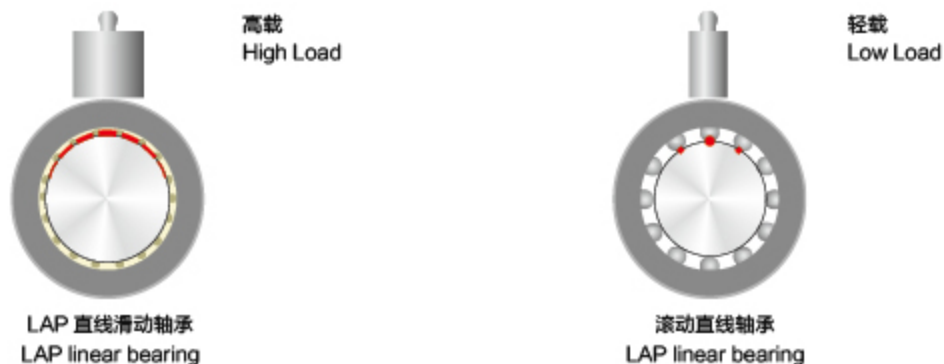
- 方便安装和更换;
 - 适合轻量化设计;
 - 免维护、无噪音;
 - 适合灰尘中长期运行;
 - 面接触滑动, 增强承载能力;
 - 耐腐蚀, 对消毒液清洗具有抵抗性;
 - 对轴材料表面硬度以及安装孔的精度要求较低。
- Convenient installation and replacement;
 - Suitable for lightweight design;
 - No maintenance, no noise;
 - Suitable for long and long running of dust;
 - Surface contact slip, enhance carrying capacity;
 - Anti-corrosion, anti-venom cleaning is resistant;
 - The hardness of the axial material and the precision of the mounting hole are lower.

LAP 直线轴承高承载能力

LAP linear bearing with high loading capability

LAP 直线轴承作为一种直线滑动轴承, 工作面是以面形式与轴表面接触, 而传统的滚珠直线轴承是以点线的形式和轴表面接触; 这就决定了较大接触面的 LAP 系列直线轴承具有比滚珠直线轴承更高的承载能力。

As a linear sliding bearings, the contacting of the bearing and the shaft is a surface instead of point contact of the traditional ball bearings. So it results in that the surface contacting LAP series linear sliding bearings are with better loading capability than the sliding ball bearings.



直线轴承和轴端支撑 Linear bearings and shaft ends support

LAP 直线轴承在污垢、灰尘中干运行

LAP linear bearing used in critical conditions of containments and dusts



LAP 直线轴承滑动膜是专门为干运行而开发的高性能材料；特殊的结构设计允许轴承在污垢、灰尘或沙粒中平稳运行，使脏物快速的落入到设计的凹槽中，并通过不断的直线运动，使脏物最终从凹槽中被带出直线轴承系统。而传统的金属滚动直线轴承在有污垢、灰尘或沙粒存在的情况下会很容易出现卡死、跑珠等现象，甚至会因卡死现象导致轴被拉伤。

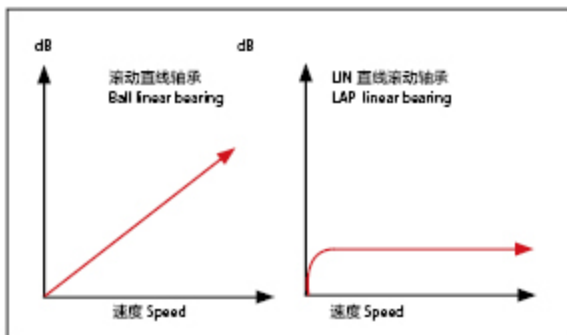
LAP linear bearing sliding film is a high-performance material developed specifically for dry running; the special structural design allows bearings to run smoothly in dirt, dust or sand, allowing dirt to quickly fall into the groove of the design and By continuous linear motion, the dirt is finally brought out of the groove by a linear bearing system. The traditional metal rolling linear bearings in the presence of dirt, dust or sand will be prone to stuck, running beads and other phenomena, and even stuck due to the phenomenon led to the shaft was injured.

LAP 直线轴承低噪音运行

LAP linear bearings operation with low noise

金属滚珠直线轴承由于滚珠在运动过程中与保持架体之间的撞击会发出噪音，而这种噪音会随着速度的加快而增高。但 LAP 直线轴承的工作面为滑动摩擦设计，所以在运行过程中只能发出较低的摩擦声，运行噪音非常低。

Metal ball linear bearings make noises due to the impact of the balls with the cage body during the movement, and the noise increases with increasing speed. However, LAP linear bearing face sliding friction design, so in the course of the operation can only be issued by the lower friction noise, the running noise is very low.



■ 噪音曲线对比图 Comparison of noise development

LAP 直线轴承允许经常接触清洗液

LAP linear bearings allows the access of cleaning solution

LAP 直线轴承被经常用于食品包装机械的导向机构中，经常受到清洗液的冲刷；多年的使用证明 LAP 直线轴承正如所设计的那样足够抵抗各类碱性清洗液的腐蚀，甚至能整体浸泡在液体介质中运行。

LAP linear sliding bearings are used in the food packing machine guiding system so it is easily access to the cleaning solutions. Years of application experience proves that the LAP series bearings are corrosion resistant to most kinds of Alkaline cleaning solutions or could be even immersed into the solutions.

直线轴承和轴端支撑 Linear bearings and shaft ends support

滑动膜性能数据表 Sliding Membrane Material Data Sheets

一般性能 Common Capability	试验方法 Testing Method	单位 Unit	HPP3	HPP5
密度 Density	IS01183	g/cm ³	1.48	1.44
颜色 Color			黄色 Yellow	黑色 Black
对钢的动摩擦系数 Dynamic friction /steel(dry)			0.05-0.15	0.09-0.25
最大 P.V 值 Max. PV (dry)		N/mm ² × mis	0.4	1.5
最大旋转速度值 Max. rotating velocity		m/s	1.5	1.5
最大摇摆速度值 Max. oscillating velocity		m/s	1.1	1.1
最大直线速度值 Max. linear velocity		m/s	8.0	5.0
抗拉强度 Tensile strength	IS0527	MPa	75	170
抗压强度 (轴向) Compressive strength (Axial)		MPa	60	100
弹性模量 E-module	IS0527	MPa	2400	7900
允许最大表面静压力 (20℃) Max. static pressure of the surface, 20℃		MPa	35	150
邵氏硬度 Shore hardness	IS0 868	D	74	85
连续工作温度 Continuous work temperature		℃	-50/+90	-100/+250
短时运行温度 Short-time work temperature		℃	-50/+120	-100/+315
导热性 Thermal conductivity	ASTME1461	W/m × k	0.25	0.6
线性热膨胀系数 Linear coef. of thermal expansion	ASTMD696	K ⁻¹ × 10 ⁻⁶	9	5
RH50/23℃时的吸湿性 Moisture absorption RH50/23℃	ASTMD570	%	0.2	0.1
最大吸水率 23℃ Max. water absorption, 23℃		%	1.2	0.5
燃烧性能 Flammability	UL94		HB	V0
体电阻率 Volume resistivity	IEC60093	Ω cm	>10 ¹³	>10 ⁸
面电阻率 Surface resistivity	IEC60093	Ω cm	>10 ¹²	>10 ⁷

LAP 直线轴承承载能力 LAP Bearing Load Capacity

■ 滑动膜材料 Sliding membrane material: HPP3

公称内径 Inside nominal diameter	最大许可动载荷 [N] Dynamic Load P=5MPa		最大许可静载荷 [N] Max. Static load P=35MPa	
	LAP-01 滑动膜	LAP-02 滑动膜	LAP-01 滑动膜	LAP-02 滑动膜
	LAP-01sliding membranes	LAP-02 sliding membranes	LAP-01sliding membranes	LAP-02 sliding membranes
10	870	780	6090	5460
12	1152	1008	8064	7056
16	1728	1008	12096	10080
20	2700	1800	18900	12600
25	4350	3000	30650	21000
30	6120	4500	42840	31500
40	9600	7200	67200	50400
50	15000	10500	67200	73500

直线轴承和轴端支撑 Linear bearings and shaft ends support

产品特性 Product Features:

免润滑、耐腐蚀、耐灰尘和脏污、摩擦系数小、运行极安静、重量轻、应用于短行程、低磁性、维修成本更低、安装方便。

Non-lubrication, corrosion resistance, dust and dirt resistance, small friction coefficient, very quiet operation, light weight, used in short stroke, low magnetic, lower maintenance costs, easy installation.



LAP 直线滑动膜

LAP linear sliding membrane



LAP-01 标准长度滑动膜
LAP-02 短系列滑动膜

LAP-01 standard length sliding film
LAP-02 short series of sliding film

LAPO 开口直线滑动膜

LAPO open linear sliding film



LAPO-01 开口式标准长度

LAPO-01 open standard length

LAP-00 全塑料直线轴承

LAP-00 all plastic linear bearings



全塑料封闭压装
高排污能力
低成本方案

All plastic pressure-mounted
High sewage capacity
Low cost program

直线轴承和轴端支撑 Linear bearings and shaft ends support

LAPJ-02 紧凑型轴承

LAPJ-02 compact bearings



压入式、低成本

Push-in, low cost

LAP-10

LAP-10



适合高速运动
 自润滑免维护
 质量轻、易安装
 适合硬轴配合使用

Suitable for high-speed movement
 Self-lubrication for maintenance
 Light and easy to install
 Suitable for hard shaft

LAP-20

LAP-20



适合高速运动
 自润滑免维护
 质量轻、易安装
 适合软轴配合使用

Suitable for high-speed movement
 Self-lubrication for maintenance
 Light and easy to install
 Suitable for soft shaft

LPM 全封闭直线轴承

LPM closed linear bearings



LPM-01 标准长度直线轴承
 LPM-02 短系列直线轴承
 LPM-03 自调心直线轴承

LPM-01 standard length linear bearings
 LPM-02 short series of linear bearings
 LPM-03 self-aligning linear bearings

直线轴承和轴端支撑 Linear bearings and shaft ends support

LPM 开口式直线轴承

LPM open linear bearings



LPM-01K 标准开口式
LPM-03 自调心开口式

LPM-01K standard open type
LPM-03 Self-aligning opening

LPMF 法兰式直线轴承座

LPMF Flanged Linear Bearing



LPMF-01 圆法兰标准长度设计
LPMF-02 方法兰标准长度设计

LPMF-01 round flange standard length design
LPMF-02 standard flange length design

LPMF 法兰式直线轴承座

LPMF Flanged Linear Bearing



LPMF-01L 圆法兰加长设计
LPMF-02L 方法兰加长设计

LPMF-01L Round flange extension design
LPMF-02L method flange longer design

LPM 和 LPME 封闭式轴承座

LPM and LPME closed housings



LPM-05 封闭式轴承座
LPME-05 封闭式间隙可调节短型轴承座

LPM-05 closed bearing
LPME-05 Closed Clearance Adjustable Short Housings

直线轴承和轴端支撑 Linear bearings and shaft ends support

LPM 长设计轴承座

LPM long design bearing seat



LPM-06 长设计封闭式轴承座
 LPM-06K 长设计开口轴承座

LPM-06 long design closed housing
 LPM-06K long design open bearing

LPME-06K 开口式可调节轴承

LPME-06K open adjustable bearings



开口式可调节基块设计
 可装配 LAPO-01 滑动膜
 阳极氧化铝合金外壳
 螺栓固定 免维护、低噪音
 适用于污垢或灰尘环境
 使用温度 -50°C /+90°C

Open and adjustable block design
 Assembled
 LIN-11K liners Anodized aluminum
 adapter
 Secured by bolts
 Maintenance-free and low noise
 Unaffected by dirt and dust
 Operation temperature -50°C /+90°C

LPM 封闭式长设计轴承座

LPM closed long design bearing

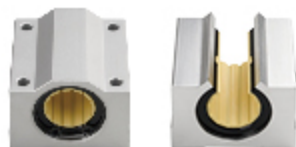


LPM-05L 封闭式长设计轴承座

LPM-05L closed long design bearing

LPMM 重载型长设计轴承座

LPMM heavy-duty long design bearing seat



LPMM-01 长设计重载封闭式轴承座
 LPMM-01K 长设计重载开口轴承座

LPMM-01 Long Design Heavy Duty
 Closed Housings
 LPMM-01K Long Design Heavy Duty
 Open Housings

直线轴承和轴端支撑 Linear bearings and shaft ends support

LPMM 串联式轴承座

LPMM series bearing



LPMM-01L 封闭式串联轴承座
LPMM-01KL 开口式串联轴承座

LPMM-01L enclosed series bearing
LPMM-01KL open series housing

LPMM 封闭式短型轴承座

LPMM closed short housings



LPMM-01LS 封闭式短型重载轴承座内
部可配: LAP-00、LPM-01、LPM-03

LPMM-01LS enclosed short heavy-
duty bearing internal can be equipped
with: LAP-00, LPM-01, LPM-03

LSH 轴支撑

LSH shaft support



LSH 和 LSHF 轴支撑
尺寸: $\varnothing 10 \sim \varnothing 50$

LSH and LSHF shaft support
Size: $\varnothing 10 \sim \varnothing 50$

LPP 弹性直线轴承

LPP flexible linear bearings



高排屑能力和低成本、易清洗

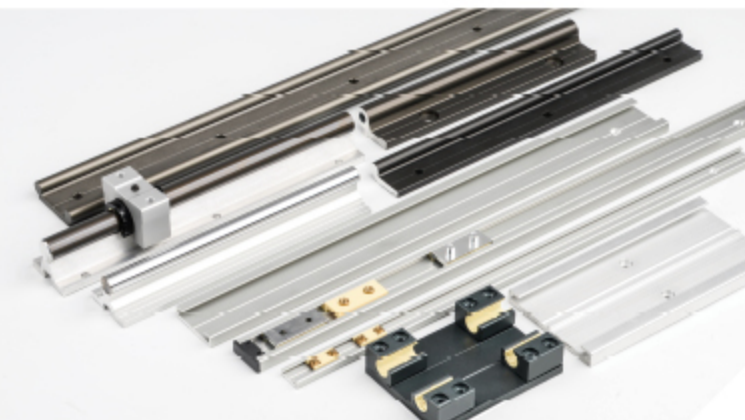
High chip removal capacity and low
cost, easy to clean

直线导轨和滑块 Linear guide and slider

产品特性 Product Features :

直线度好、低成本、低摩擦系数、标准规格常备库存、长度可定制。

Straight line, low cost, low coefficient of friction, standard stock standing, length can be customized.



LAS 精密铝轴

LAS precision aluminum shaft



重量轻
抗腐蚀
摩擦系数低

Light weight
Anti-corrosion
Low coefficient of friction

SLR 直线支撑轴

SLR linear support shaft



高承载
高精度
低成本

High load
High precision
low cost

LD 直线导轨

LD Linear Guides



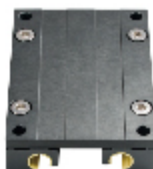
安装简单、免维护
重量轻、低噪音
铝合金表面阳极氧化
规格：10-40、10-80、10-120
16-60、20-80、25-120

Simple installation and maintenance
Light weight and low noise
Anodizing of aluminum alloy surface
Specifications: 10-40,10-80,10-120
16-60, 20-80, 25-120

直线导轨和滑块 Linear guide and slider

LDP 双导轨滑动滑块

LDP dual rail slide slider



面板采用铝合金制作
表面经过阳极氧化
样本规格常备库存
长度可订制

Panel made of aluminum
The surface is anodized
Sample size standing stock
Length can be customized

LDS 单导轨

LDS single rail



可自由设计导轨宽度
安装简单、免维护
样本规格常备库存
尺寸： $\varnothing 10$ 、 $\varnothing 16$ 、 $\varnothing 20$ 、 $\varnothing 25$

Free design guide width
Simple installation and maintenance
Sample size standing stock
Size: $\varnothing 10$, $\varnothing 16$, $\varnothing 20$, $\varnothing 25$

LDPS 单导轨滑块

LDPS single rail slider



铝合金加工滑块
表面阳极氧化
滑动膜常规材料：HPP3
可选择耐高温材料：HPP5
尺寸： $\varnothing 10$ 、 $\varnothing 16$ 、 $\varnothing 20$ 、 $\varnothing 25$

Aluminum alloy processing slider
Surface anodic oxidation
Surface anodic oxidation material: HPP3
Choice of high temperature materials: HPP5
Size: $\varnothing 10$, $\varnothing 16$, $\varnothing 20$, $\varnothing 25$

LN 紧凑型导轨

LN compact rail



铝合金表面经过硬质阳极氧化
安装高度低
尺寸：17、27、40、80

Aluminum alloy surface after hard anodizing
Low installation height
Size: 17, 27, 40, 80

LNB 低安装高度滑块

LNB low mounting height slider



滑块结构形式可多种多样
现有 4 种规格：标准型带安装孔
标准型带螺纹孔
注塑一体型带安装孔
注塑一体型带螺纹孔

Slider structure can be varied
The existing four kinds of specifications:
Standard with mounting holes
Standard with threaded hole
Injection molding with a mounting hole
Injection molding with threaded hole

丝杠和螺母 Screw and nut

产品特性 Product Features :

免维护、低噪音、耐腐蚀和耐脏污、螺母结构形式可定制。

Maintenance-free, low noise, corrosion and dirt, nut structure can be customized.



SG 系列单头梯形丝杠

SG series single head screw



可进行定制加工
丝杠材料可选择
可选择旋转方向
可提供各种公称直径及其导程

Can be customized processing
Screw material to choose from
You can choose the direction of rotation
Available in various nominal diameters and their lead

SGK 系列多头快速丝杠

SGK series fast lead screw



丝杠材料可选择
可进行定制加工
多头、大导程、进给速度快

The screw material is optional
Can be customized processing
Long, big lead, fast forward

梯形螺母

Trapezoidal nut



具有多种结构形式
螺母螺母材料可选择
HPP3/HPP4/HPP5
免维护、自润滑、干运行

With a variety of structural forms
Nut nut material optional
HPP3 / HPP4 / HPP5
Maintenance-free, self-lubricating, dry operation

丝杠和螺母 Screw and nut

快速螺母

Quick nut



耐腐蚀和脏污等
螺母材料可选择
HPP3/HPP4/HPP5
大导程、进给速度快
螺母具有多种结构形式
免维护、自润滑、干运行

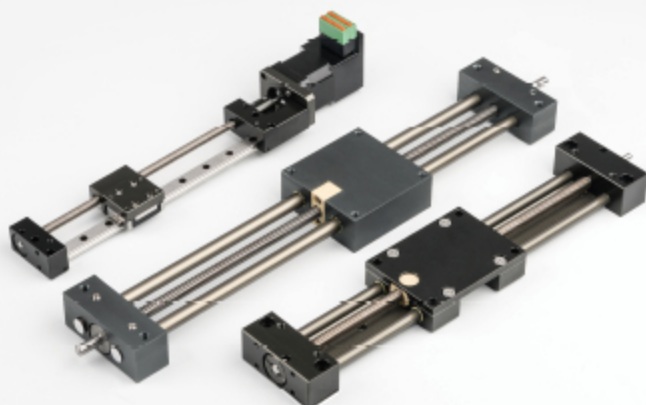
Corrosion and dirt and so on
Nut material optional
HPP3 / HPP4 / HPP5
Large lead, fast feed nut with a variety of
structural forms Maintenance-free, self-
lubricating, dry run

直线滑动平台 Linear sliding platform

产品特性 Product Features :

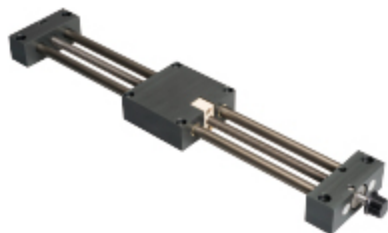
免维护、自润滑、结构紧凑、用于极端环境、低噪音、行程和结构形式可定制、驱动可选择手轮或者电动。

Maintenance-free, self-lubricating, compact, for extreme environments, low noise, stroke and structural forms can be customized, the drive can choose hand wheel or electric.



SLT 直线滑动平台

端头支撑和中间滑动块材料：
铝合金阳极氧化
导向轴材料可选择：
45# 钢、轴承钢、不锈钢、铝合金
丝杆材料：
45# 钢或者不锈钢
丝杠形式：
梯形丝杠或者快速丝杠
螺母：
材料可选：HPP3/HPP4/HPP5
自润滑、免维护
丝杠输出端：
可订制加工
行程：
可定制

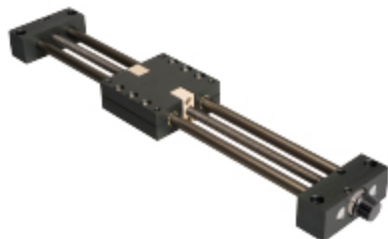


SLT linear sliding platform

End support and middle slider Material:
Anodized aluminum
Guide shaft material options:
45 # steel, bearing steel, stainless steel, aluminum
Screw material:
45 # steel or stainless steel
Screw form:
Trapezoidal screw or fast screw
Nut:
Material optional HPP3 / HPP4 / HPP5
Self-lubricating, maintenance-free
Screw output:
Can be customized processing
Itinerary:
customizable

SLT-PL 直线滑动平台

端头支撑和中间滑动块材料：
铝合金阳极氧化
导向轴材料可选择：
45# 钢、轴承钢、不锈钢、铝合金
丝杆材料：
45# 钢或者不锈钢
丝杠形式：
梯形丝杠或者快速丝杠
螺母：
预紧梯形丝杠螺母，预紧力 50N
螺母和丝杠间的间隙可手动调节
材料可选：HPP3/HPP4/HPP5
自润滑、免维护
丝杠输出端：
可订制加工
行程：
可定制



SLT-PL linear sliding platform

End Support and Center Slider Material:
Aluminum Anodized
Guide shaft material options:
45 # steel, bearing steel, stainless steel, aluminum
screw material:
45 # steel or stainless steel
Screw form:
Trapezoidal screw or fast screw
Nut:
Preloaded screw nut, preload 50N Nut and screw gap
can be adjusted manually Material Optional HPP3 /
HPP4 / HPP5
Self-lubricating, maintenance-free
Screw output:
Can be customized processing
Itinerary:
customizable

直线滑动平台 Linear sliding platform

SLD 直线滑动平台

SLD linear sliding platform

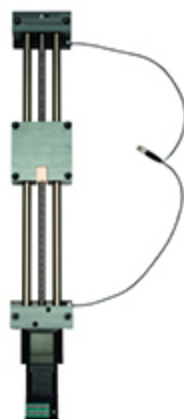


两端头支撑和中间滑动面板材料：
 铝合金阳极氧化
 导向部分：
 配 LD 系列双导轨
 丝杠材料：
 45# 钢或者不锈钢
 丝杠形式：
 梯形丝杠或者快速丝杠
 螺母：
 材料可选，HPP3/HPP4/HPP5
 免维护、自润滑
 驱动型号：
 手动

Both end support and middle sliding panel material:
 Anodized aluminum
 Guide part:
 With LD series double rail
 Screw material:
 45 # steel or stainless steel
 Screw form:
 Trapezoidal screw or fast screw
 Nut:
 Optional material, HPP3 / HPP4 / HPP5
 Maintenance-free, self-lubricating
 Drive Model:
 Manual

SLT-E 直线滑动平台

SLT-E linear sliding platform

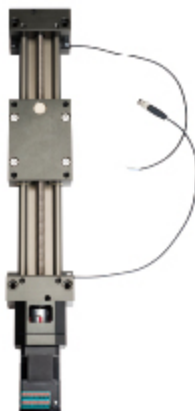


两端头支撑和中间滑动块材料：
 铝合金阳极氧化
 接受定制导向轴：
 45# 钢、轴承钢、不锈钢、铝合金
 丝杠材料：
 45# 钢或者不锈钢
 丝杠形式：
 梯形丝杠或者快速丝杠
 螺母：
 材料可选，HPP3/HPP4/HPP5
 自润滑、免维护
 丝杠输出端：
 可根据客户图纸加工
 行程：
 行程可定制
 电机：
 5 种步进电机

Both end support and middle slider Material:
 Anodized aluminum
 Accept customized guide shaft:
 Can be equipped with 45 # steel, bearing steel, stainless steel, aluminum alloy screw material:
 45 # steel or stainless steel
 Screw form:
 Trapezoidal screw or fast screw
 Nut:
 Optional material, HPP3 / HPP4 / HPP5
 Self-lubricating, maintenance-free
 Screw output:
 According to customer drawings processing
 Itinerary:
 Itinerary can be customized
 Motor:
 5 kinds of stepper motor

SLD-E 直线滑动平台

SLD-E linear sliding platform



两端头支撑和中间滑动块材料：
 铝合金阳极氧化
 导向部分：
 配 LD 系列双导轨
 丝杠材料：
 45# 钢或者不锈钢
 丝杠形式：
 梯形丝杠或者快速丝杠
 螺母：
 材料可选，HPP3/HPP4/HPP5
 自润滑、免维护
 丝杠输出端：
 可根据客户图纸加工
 行程：
 行程可定制
 电机：
 5 种步进电机

Both end support and middle slider Material:
 Aluminum anodized
 Guide part:
 With LD series double rail
 Screw material:
 45 # steel or stainless steel
 Screw form:
 Trapezoidal screw or fast screw
 Nut:
 Optional materials, HPP3 / HPP4 / HPP5
 self-lubricating, maintenance-free
 Screw output:
 According to customer drawings processing
 Itinerary:
 Itinerary can be customized
 Motor:
 5 kinds of stepper motor



上海市闵行区都园路 4288 号 3 幢（都园创意园）

电话：021-34503060

传真：021-34553221

邮箱：Janewang@jonzoo.com

网址：www.jonzoo.com

Building 3, No. 4288, DuYuan Road, MinHang
District, ShangHai, China

Tel : 021-34503060

Fax : 021-34553221

E-mail : Janewang@jonzoo.com

Website : www.jonzoo.com