

## HPP10-工程塑料轴承 Plastic Plain Bearings

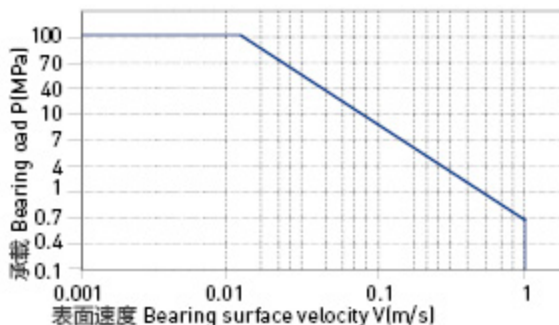
### 轴承PV值 PV Value

HPP10塑料轴承最大运行PV值为 $0.70\text{N}/\text{mm}^2 \times \text{m}/\text{s}$ ;由此决定轴承所承受的载荷与速度成反比, 详细查阅图表HPP10-1。

The max PV value of the HPP10 plastic bearing is  $0.70\text{N}/\text{mm}^2 \times \text{m}/\text{s}$  which determines the load capacity of bearing is inversely proportional to the speed. Please refer to the chart for more detailed information (Graph HPP10-1).

图表 HPP10-1: PV 图表

Graph HPP10-1: Permissible PV value for HPP10



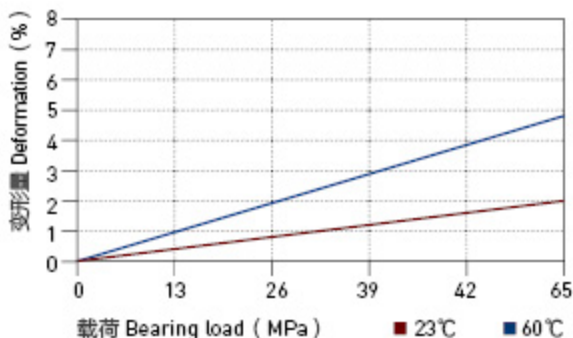
### 轴承的载荷、速度、温度 Load, Speed And Temperature

HPP10 系列轴承可承受最大静载荷为 110Mpa, 在此载荷下轴承的最大压缩变形量参考图表 HPP10-2, 轴承实际工作载荷略小于 110Mpa, 载荷还受到运行速度以及温度的影响, 速度越快 (Vmax: 1.0m/s) 会导致摩擦温度上升, 而温度上升 (Tmax: 200℃) 会导致轴承的承载能力逐渐减弱, 载荷随轴承工作温度变化情况参考图表 HPP10-3。

HPP10 allows the Max static load of 110Mpa, The max compressive deformation rate under the max load is listed in Graph HPP10-1, The actual load capacity of bearing is slightly less than 110Mpa, The bearing load is variable against the speed and temperature, Fast speed (Vmax: 1.0m/s) results into higher temperature (Tmax: 200℃) which decreases the load capacity of the bearing. Please refer to the Graph HPP10-3 for such variation.

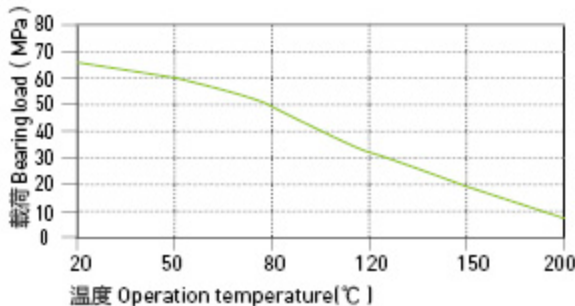
图表 HPP10-2: 载荷 - 温度 - 变形量图表

Graph HPP10-2: Load-Temperature deformation



图表 HPP10-3: 载荷 - 温度图表

Graph HPP10-3: Load-Temperature diagrams



## HPP10-工程塑料轴承 Plastic Plain Bearings

### 轴承的摩擦系数、磨损、轴材料 Friction Factor, Wear And Shaft Material

#### ■ 轴承的摩擦系数 Friction factor

图表 HPP10-4 表明 HPP10 轴承的摩擦系数在载荷保持不变的情况下受运行速度的增加影响相对较小；图表 HPP10-5 表明 HPP10 轴承在保持速度不变的情况下，载荷从 0 增加到 20Mpa 过程中摩擦系数会逐步降低，而当载荷高于 20Mpa 时摩擦系数随着载荷的增加影响较小。图表 HPP10-6 表明 HPP10 轴承的摩擦系数会随着轴表面粗糙度的增大而逐渐升高，我们推荐合适的轴粗糙度为 Ra0.1-0.6 $\mu$ m。

Graph HPP10-4 shows the friction factor of HPP10 is not obviously effected by the operation speed when the loading is stable and Graph HPP10-5 shows it will be decreasing along with the loading is increased from 0 to 20 Mpa when the operation speed is unchanged, furthermore the friction factor will not be changed when the loading reaches 20Mpa upward. The friction factor of HPP10 is increased along with the increasing of the shaft roughness. The recommended shaft roughness is Ra0.1 to Ra0.6.

HPP10	干运行 Dry	油脂 Grease	油 Oil	水 Water
摩擦系数 $\mu$ Friction coef.	0.10-0.30	0.09	0.04	0.04

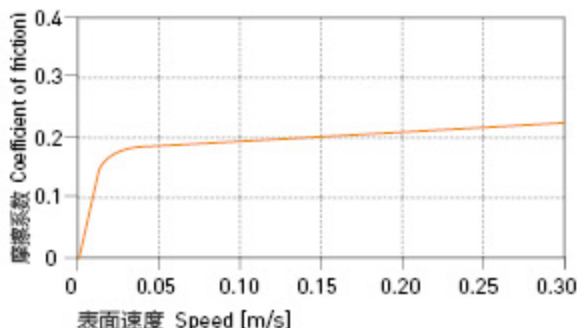
#### ■ 磨损与轴材料 Wearing and shaft material

图表 HPP10-7 与图表 HPP10-8 表明 HPP10 轴承同时适合用于硬质轴或软轴，在硬化钢轴和硬质阳极氧化轴上运行同样出色；但是硬铬钢轴不适合用于 HPP10 轴承。图表 HPP10-8 表明 HPP10 轴承在做摆动运动下的磨损要略好于旋转运动下的磨损，且当载荷超过 10Mpa 时轴承的磨损会很快增加。

Graph HPP10-7 and Graph HPP10-8 tells that the HPP10 is very good for Hardened shaft and soft shaft and it features excellent both on hardened steel shaft and hardened shaft but the hardened chrome steel shaft is not good for HPP10 bearings. Graph HPP10-8 shows that the wearing of HPP10 is better on oscillation operation than on rotation operation. The wearing will be increased when the loading is over 10Mpa.

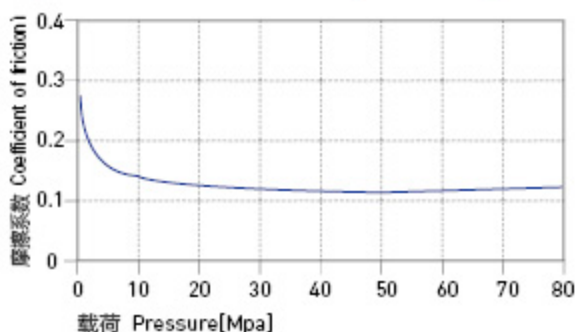
图表 HPP10-4: 摩擦系数与速度变化关系图表 P=2MPa

Graph HPP10-4: Coefficient of friction & the speed of bearing, P=2Mpa



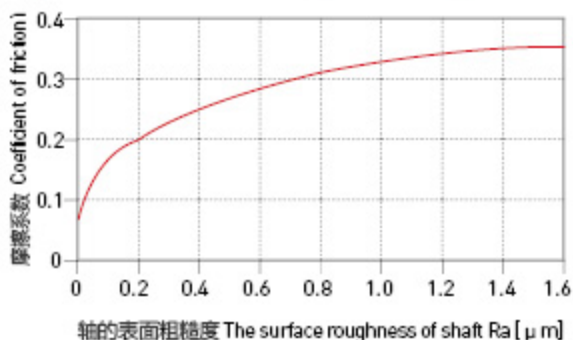
图表 HPP10-5: 摩擦系数与载荷变化关系图表 v=0.2m/s

Graph HPP10-5: Coefficient of friction & the pressure of bearing, v=0.2m/s



图表 HPP10-6: 摩擦系数与轴表面粗糙度关系图表

Graph HPP10-6: Coefficient of friction & the surface roughness of shaft



## HPP10-工程塑料轴承 Plastic Plain Bearings

### 轴承的摩擦系数、磨损、轴材料 Friction Factor, Wear And Shaft Material

#### ■ 化学抗性 Chemical Resistance

HPP10 塑料轴承具有很好的化学抗性，能抵抗绝大多数酸碱。

The Chemical Resistance of HPP10 is fairly good against most of Acid and Alkalis.

#### ■ 吸水性 Water Absorbability

在标准大气压中，HPP10 塑料轴承的吸水率极低小于 0.1%，浸泡水中最大平衡吸水率小于 0.1%；因此材料不会吸水而发生性能和尺寸变化，适合用于潮湿环境甚至水下。

The water absorb rate of HPP10 is less than 0.1% under the atmospheric pressure while it is less than 0.1% when the material is immersed into water. The material performance and dimensions of the material is stabilized for the applications under humid environment or even in the water.

#### ■ 抗UV性能 UV Resistance

HPP10 长久暴露在紫外线下材料表面会发生蜕变，抗压强度会下降。

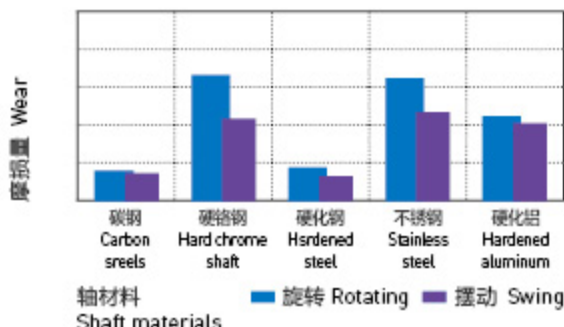
Disintegration could be possible for the material HPP10 after long period of exposing under the UV ray and therefore the compressive strength will be reduced.

#### ■ 安装公差 Installation Tolerances

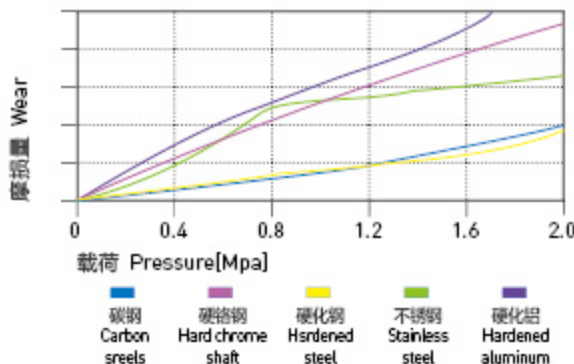
HPP10塑料轴承压装后公差Tolerances after pressfit

直径 DI. [ mm ]	HPP10 F10 [ mm ]	座孔 Housing H7 [ mm ]	轴 Shaft h9 [ mm ]
> 0~3	+0.006+0.046	0~+0.010	0~-0.025
> 3~6	+0.010+0.058	0~+0.012	0~-0.030
> 6~10	+0.013+0.071	0~+0.015	0~-0.036
> 10~18	+0.016+0.086	0~+0.018	0~-0.043
> 18~30	+0.020+0.104	0~+0.021	0~-0.052
> 30~50	+0.025+0.125	0~+0.025	0~-0.062
> 50~80	+0.030+0.150	0~+0.030	0~-0.074
> 0~120	+0.036+0.176	0~+0.035	0~-0.087
> 120~180	+0.043+0.203	0~+0.040	0~-0.100

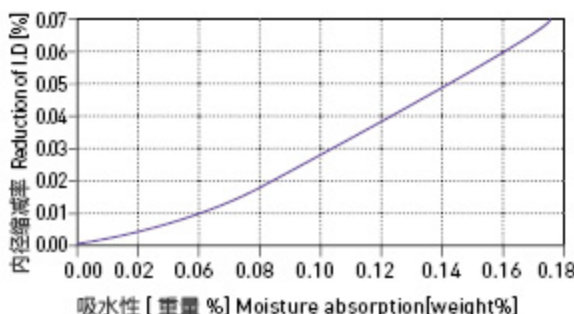
图表 HPP10-7: 在不同轴材料上旋转时的磨损量  $P=2MPa, v=0.2m/s$   
Graph HPP10-7: The bearing wear under rotating with different shaft materials,  $p=2MPa, v=0.2m/s$



图表 HPP10-8: 旋转磨损随轴材料与压力变化关系  $v=0.2m/s$   
Graph HPP10-8: The bearing wear & pressure under rotating with different shaft materials,  $v=0.2m/s$

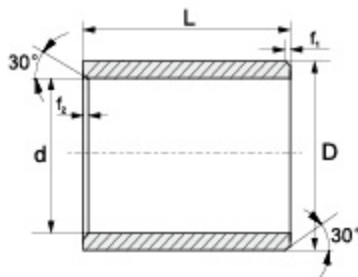


图表 HPP10-9: 吸水性的影响  
Graph HPP10-9: Effect of moisture absorption on HPP10 bearings





## HPP10标准规格Standard 直套Metric Cylindrical Bushings



推荐安装公差 Recommend fitting tolerance:

座孔 Housing: H7

轴 Shaft: h9

订购编码 Order P/N:

HPP10-0304-03

材料 Material

d	f <sub>1</sub>	f <sub>2</sub>
1-6	0.3	0.5
6-12	0.5	
12-30	0.8	
>30	1.2	

订购编码 Order PN	d [mm]	d- 公差 After fitting [mm]	D [mm]	L(h13) [mm]
HPP10-0304-03	3	+0.006/+0.046	4.5	3
HPP10-0304-06	3	+0.006/+0.046	4.5	6
HPP10-0405-04	4	+0.010/+0.058	5.5	4
HPP10-0405-06	4	+0.010/+0.058	5.5	6
HPP10-0507-05	5	+0.010/+0.058	7	5
HPP10-0507-08	5	+0.010/+0.058	7	8
HPP10-0608-06	6	+0.010/+0.058	8	6
HPP10-0608-08	6	+0.010/+0.058	8	8
HPP10-0608-10	6	+0.010/+0.058	8	10
HPP10-0810-06	8	+0.013/+0.071	10	6
HPP10-0810-08	8	+0.013/+0.071	10	8
HPP10-0810-10	8	+0.013/+0.071	10	10
HPP10-0810-12	8	+0.013/+0.071	10	12
HPP10-0810-15	8	+0.013/+0.071	10	15
HPP10-1012-06	10	+0.013/+0.071	12	6
HPP10-1012-08	10	+0.013/+0.071	12	8
HPP10-1012-10	10	+0.013/+0.071	12	10
HPP10-1012-12	10	+0.013/+0.071	12	12
HPP10-1012-15	10	+0.013/+0.071	12	15
HPP10-1012-20	10	+0.013/+0.071	12	20
HPP10-1214-06	12	+0.016/+0.086	14	6
HPP10-1214-08	12	+0.016/+0.086	14	8
HPP10-1214-10	12	+0.016/+0.086	14	10
HPP10-1214-12	12	+0.016/+0.086	14	12
HPP10-1214-15	12	+0.016/+0.086	14	15
HPP10-1214-20	12	+0.016/+0.086	14	20
HPP10-1214-25	12	+0.016/+0.086	14	25
HPP10-1416-12	14	+0.016/+0.086	16	12
HPP10-1416-15	14	+0.016/+0.086	16	15
HPP10-1416-20	14	+0.016/+0.086	16	20
HPP10-1517-07	15	+0.016/+0.086	17	7
HPP10-1517-10	15	+0.016/+0.086	17	10
HPP10-1517-15	15	+0.016/+0.086	17	15
HPP10-1517-20	15	+0.016/+0.086	17	20
HPP10-1517-25	15	+0.016/+0.086	17	25

订购编码 Order PN	d [mm]	d- 公差 After fitting [mm]	D [mm]	L(h13) [mm]
HPP10-1618-10	16	+0.016/+0.086	18	10
HPP10-1618-12	16	+0.016/+0.086	18	12
HPP10-1618-15	16	+0.016/+0.086	18	15
HPP10-1618-20	16	+0.016/+0.086	18	20
HPP10-1618-25	16	+0.016/+0.086	18	25
HPP10-1618-35	16	+0.016/+0.086	18	35
HPP10-1719-20	17	+0.016/+0.086	19	20
HPP10-1820-15	18	+0.016/+0.086	20	15
HPP10-1820-20	18	+0.016/+0.086	20	20
HPP10-1820-25	18	+0.016/+0.086	20	25
HPP10-2023-10	20	+0.020/+0.104	23	10
HPP10-2023-15	20	+0.020/+0.104	23	15
HPP10-2023-20	20	+0.020/+0.104	23	20
HPP10-2023-25	20	+0.020/+0.104	23	25
HPP10-2023-30	20	+0.020/+0.104	23	30
HPP10-2225-15	22	+0.020/+0.104	25	15
HPP10-2225-20	22	+0.020/+0.104	25	20
HPP10-2528-09	25	+0.020/+0.104	28	9
HPP10-2528-12	25	+0.020/+0.104	28	12
HPP10-2528-13	25	+0.020/+0.104	28	13
HPP10-2528-15	25	+0.020/+0.104	28	15
HPP10-2528-20	25	+0.020/+0.104	28	20
HPP10-2528-30	25	+0.020/+0.104	28	30
HPP10-2528-35	25	+0.020/+0.104	28	35
HPP10-2832-20	28	+0.020/+0.104	32	20
HPP10-2832-30	28	+0.020/+0.104	32	30
HPP10-3034-15	30	+0.020/+0.104	34	15
HPP10-3034-20	30	+0.020/+0.104	34	20
HPP10-3034-25	30	+0.020/+0.104	34	25
HPP10-3034-30	30	+0.020/+0.104	34	30
HPP10-3034-40	30	+0.020/+0.104	34	40
HPP10-3034-60	30	+0.020/+0.104	34	60
HPP10-3236-25	32	+0.025/+0.125	36	25
HPP10-3236-30	32	+0.025/+0.125	36	30
HPP10-3236-40	32	+0.025/+0.125	36	40

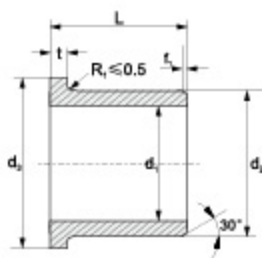
订购编码 Order PN	d [mm]	d- 公差 After fitting [mm]	D [mm]	L(h13) [mm]
HPP10-3539-20	35	+0.025/+0.125	39	20
HPP10-3539-30	35	+0.025/+0.125	39	30
HPP10-3539-40	35	+0.025/+0.125	39	40
HPP10-3539-50	35	+0.025/+0.125	39	50
HPP10-4044-20	40	+0.025/+0.125	44	20
HPP10-4044-30	40	+0.025/+0.125	44	30
HPP10-4044-40	40	+0.025/+0.125	44	40
HPP10-4044-50	40	+0.025/+0.125	44	50
HPP10-4550-30	45	+0.025/+0.125	50	30
HPP10-4550-50	45	+0.025/+0.125	50	50
HPP10-5055-30	50	+0.025/+0.125	55	30
HPP10-5055-40	50	+0.025/+0.125	55	40

订购编码 Order PN	d [mm]	d- 公差 After fitting [mm]	D [mm]	L(h13) [mm]
HPP10-5055-60	50	+0.025/+0.125	55	60
HPP10-5560-26	55	+0.030/+0.150	60	26
HPP10-5560-50	55	+0.030/+0.150	60	50
HPP10-6065-45	60	+0.030/+0.150	65	45
HPP10-6065-60	60	+0.030/+0.150	65	65
HPP10-6570-50	65	+0.030t/+0.150	70	50
HPP10-7075-50	70	+0.030/+0.150	75	50
HPP10-7075-70	70	+0.030/+0.150	75	70
HPP10-7580-60	75	+0.030/+0.150	80	60

\*d 公差为压入标准 H7 座孔 (ISO3547-1) 后公差

\*Tolerance d: after being pressed into housing H7(ISO3547-1)

## 翻边轴套 Metric Flange Bushings



推荐安装公差 Recommend fitting tolerance:

座孔 Housing: H7

轴 Shaft: h9

订购编码 Order P/N:

HPP10 F-0304-05

$d_1$   $d_2$  L  
 翻边轴套 Flange bushes  
 材料 Material

d	f
1-6	0.3
6-12	0.5
12-30	0.8
>30	1.2

订购编码 Order PN	d <sub>1</sub> [mm]	d <sub>1</sub> - 公差 After fitting [mm]	d <sub>2</sub> [mm]	d <sub>2</sub> [d13] [mm]	L[h13] [mm]	t <sub>0.14</sub> [mm]
HPP10F-0304-05	3	+0.006/+0.046	4.5	7.5	5	0.75
HPP10F-0405-04	4	+0.010/+0.058	5.5	9.5	4	0.75
HPP10F-0405-06	4	+0.010/+0.058	5.5	9.5	6	0.75
HPP10F-0507-05	5	+0.010/+0.058	7	11	5	1
HPP10F-0507-08	5	+0.010/+0.058	7	11	8	1
HPP10F-0608-04	6	+0.010/+0.058	8	12	4	1
HPP10F-0608-06	6	+0.010/+0.058	8	12	6	1
HPP10F-0608-08	6	+0.010/+0.058	8	12	8	1
HPP10F-0608-10	6	+0.010/+0.058	8	12	10	1
HPP10F-0810-05	8	+0.013/+0.071	10	15	5.5	1
HPP10F-0810-06	8	+0.013/+0.071	10	15	6	1
HPP10F-0810-07	8	+0.013/+0.071	10	15	7	1
HPP10F-0810-08	8	+0.013/+0.071	10	15	8	1
HPP10F-0810-09	8	+0.013/+0.071	10	15	9	1
HPP10F-0810-10	8	+0.013/+0.071	10	15	10	1
HPP10F-0810-15	8	+0.013/+0.071	10	15	15	1
HPP10F-0812-06	8	+0.025/+0.083	12	16	6	2
HPP10F-1012-04	10	+0.013/+0.071	12	18	4	1
HPP10F-1012-05	10	+0.013/+0.071	12	18	5	1

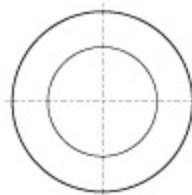
订购编码 Order PN	d <sub>1</sub> [mm]	d <sub>1</sub> - 公差 After fitting [mm]	d <sub>2</sub> [mm]	d <sub>2</sub> [d13] [mm]	L[h13] [mm]	t <sub>0.14</sub> [mm]
HPP10F-1012-06	10	+0.013/+0.071	12	18	6	1
HPP10F-1012-08	10	+0.013/+0.071	12	18	8	1
HPP10F-1012-09	10	+0.013/+0.071	12	18	9	1
HPP10F-1012-10	10	+0.013/+0.071	12	18	10	1
HPP10F-1012-12	10	+0.013/+0.071	12	18	12	1
HPP10F-1012-15	10	+0.013/+0.071	12	18	15	1
HPP10F-1012-17	10	+0.013/+0.071	12	18	17	1
HPP10F-1012-20	10	+0.013/+0.071	12	18	20	1
HPP10F-1012-22	10	+0.013/+0.071	12	18	22	1
HPP10F-1012-25	10	+0.013/+0.071	12	18	25	1
HPP10F-1214-07	12	+0.016/+0.086	14	20	7	1
HPP10F-1214-09	12	+0.016/+0.086	14	20	9	1
HPP10F-1214-10	12	+0.016/+0.086	14	20	10	1
HPP10F-1214-12	12	+0.016/+0.086	14	20	12	1
HPP10F-1214-15	12	+0.016/+0.086	14	20	15	1
HPP10F-1214-20	12	+0.016/+0.086	14	20	20	1
HPP10F-1416-10	14	+0.016/+0.086	16	22	10	1
HPP10F-1416-12	14	+0.016/+0.086	16	22	12	1
HPP10F-1416-17	14	+0.016/+0.086	16	22	17	1

订购编码 Order PN	d <sub>1</sub> [mm]	d <sub>1</sub> - 公差 After fitting [mm]	d <sub>2</sub> [mm]	d <sub>2</sub> [d13] [mm]	L[h13] [mm]	t <sub>0.15</sub> [mm]
HPP10F-1517-06	15	+0.016/+0.086	17	23	6	1
HPP10F-1517-12	15	+0.016/+0.086	17	23	12	1
HPP10F-1517-17	15	+0.016/+0.086	17	23	17	1
HPP10F-1618-10	16	+0.016/+0.086	18	24	10	1
HPP10F-1618-12	16	+0.016/+0.086	18	24	12	1
HPP10F-1618-13	16	+0.016/+0.086	18	24	13	1
HPP10F-1618-17	16	+0.016/+0.086	18	24	17	1
HPP10F-1618-25	16	+0.016/+0.086	18	24	25	1
HPP10F-1820-12	18	+0.016/+0.086	20	26	12	1
HPP10F-1820-17	18	+0.016/+0.086	20	26	17	1
HPP10F-2023-07	20	+0.020/+0.104	23	30	7	1.5
HPP10F-2023-11.5	20	+0.020/+0.104	23	30	11.5	1.5
HPP10F-2023-16.5	20	+0.020/+0.104	23	30	16.5	1.5
HPP10F-2023-21.5	20	+0.020/+0.104	23	30	21.5	1.5
HPP10F-2023-30	20	+0.020/+0.104	23	30	30	1.5
HPP10F-2528-13.5	25	+0.020/+0.104	28	35	13.5	1.5
HPP10F-2528-21.5	25	+0.020/+0.104	28	35	21.5	1.5
HPP10F-2528-30	25	+0.020/+0.104	28	35	30	1.5
HPP10F-3034-16	30	+0.020/+0.104	34	42	16	2

订购编码 Order PN	d <sub>1</sub> [mm]	d <sub>1</sub> - 公差 After fitting [mm]	d <sub>2</sub> [mm]	d <sub>2</sub> [d13] [mm]	L[h13] [mm]	t <sub>0.15</sub> [mm]
HPP10F-3034-26	30	+0.020/+0.104	34	42	26	2
HPP10F-3034-40	30	+0.020/+0.104	34	42	40	2
HPP10F-3236-15	32	+0.025/+0.125	36	45	15	2
HPP10F-3236-26	32	+0.025/+0.125	36	45	26	2
HPP10F-3539-26	35	+0.025/+0.125	39	47	26	2
HPP10F-4044-22	40	+0.025/+0.125	44	52	22	2
HPP10F-4044-30	40	+0.025/+0.125	44	52	30	2
HPP10F-4044-40	40	+0.025/+0.125	44	52	40	2
HPP10F-4550-50	45	+0.025/+0.125	50	58	50	2
HPP10F-5055-40	50	+0.025/+0.125	55	63	40	2
HPP10F-5055-50	50	+0.025/+0.125	55	63	50	2
HPP10F-6065-40	60	+0.030/+0.150	65	75	40	2
HPP10F-6065-50	60	+0.030/+0.150	65	75	50	2
HPP10F-7075-40	70	+0.030/+0.150	75	83	40	2
HPP10F-7075-50	70	+0.030/+0.150	75	83	50	2
HPP10F-7580-50	75	+0.030/+0.150	80	88	50	2

\*d<sub>1</sub> 公差为压入标准 H7 座孔 (ISO3547-1) 后公差\*Tolerance d<sub>1</sub>: after being pressed into housing H7(ISO3547-1)

## 垫片Metric Thrust Washers



订购编码 Order PN:

HPP10 W-0509-006



材料 Material

订购编码 Order PN	d <sup>+0.25</sup> [mm]	D <sub>0.25</sub> [mm]	T <sub>0.15</sub> [mm]
HPP10W-0509-006	5	9	0.6
HPP10W-0615-015	6	15	1.5
HPP10W-0620-015	6	20	1.5
HPP10W-0815-005	8	15	0.5
HPP10W-0815-015	8	15	1.5
HPP10W-0818-010	8	18	1.0
HPP10W-0818-015	8	18	1.5
HPP10W-1018-010	10	18	1.0
HPP10W-1018-015	10	18	1.5
HPP10W-1018-020	10	18	2.0
HPP10W-1224-015	12	24	1.5
HPP10W-1426-015	14	26	1.5
HPP10W-1524-015	15	24	1.5
HPP10W-1630-015	16	30	1.5

订购编码 Order PN	d <sup>+0.25</sup> [mm]	D <sub>0.25</sub> [mm]	T <sub>0.25</sub> [mm]
HPP10W-1832-015	18	32	1.5
HPP10W-2036-015	20	36	1.5
HPP10W-2238-015	22	38	1.5
HPP10W-2442-015	24	42	1.5
HPP10W-2640-0075	26	40	0.75
HPP10W-2644-015	26	44	1.5
HPP10W-2848-015	28	48	1.5
HPP10W-3254-015	32	54	1.5
HPP10W-3862-015	38	62	1.5
HPP10W-4266-015	42	66	1.5
HPP10W-4874-020	48	74	2.0
HPP10W-5278-020	52	78	2.0
HPP10W-6290-020	62	90	2.0

\* 根据要求提供定位孔设计 The fixing bore design upon request