

XWF 多用型缠绕轴承常规尺寸表

XWF Multi-Purpose Winding Bearing Conventional Size Table

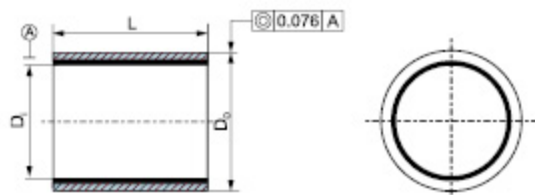
订购编码 Order PN

可供规格 Specifications:

订购编码 Order P/N:

XWF-2025-30

长度 L
 外径 D_o
 内径 D_i
 材料 Material:



长度公差表 Length tolerance table	L			
	≥75 mm	> 75 to < 150 mm	≥150 mm	
D_i	≤75 mm	-0.50 mm	-1.00 mm	-1.50 mm
	> 75 to ≤120 mm	-1.00 mm	-1.00 mm	-1.50 mm
	> 120 to ≤150 mm	-1.00 mm	-1.50 mm	-1.50 mm

轴承座孔和轴心直径公差分别 -1.50 mm 为 H 7/H 8 和 h7/h8。

可根据要求提供更小的长度公差。均以毫米为单位进行测量。
 The bearing housing bore and shaft diameter tolerances are -1.50 mm for H 7/H 8 and h7/h8 respectively.
 Smaller length tolerances are available upon request. All measured in millimeters

轴承零件编号 Bearing part number	内径 D_i Inner diameter D_i	外径 D_o Outer diameter D_o	建议的轴承座孔 Recommended housing bore	建议的轴心尺寸 Recommended shaft size	运行间隙 Running clearance	长度公差 Length tolerance
XWF-015020-010	15 ^{+0.200} / _{+0.120}	20 ^{+0.100} / _{+0.050}	20 ^{+0.025} / ₀	15 ⁰ / _{-0.02}	15 ^{+0.200} / _{+0.020}	10 ^{+0.250} / ₀
XWF-015020-015	15 ^{+0.200} / _{+0.120}	20 ^{+0.100} / _{+0.050}	20 ^{+0.025} / ₀	15 ⁰ / _{-0.02}	15 ^{+0.200} / _{+0.020}	15 ^{+0.250} / ₀
XWF-015020-020	15 ^{+0.200} / _{+0.120}	20 ^{+0.100} / _{+0.050}	20 ^{+0.025} / ₀	15 ⁰ / _{-0.02}	15 ^{+0.200} / _{+0.020}	20 ^{+0.250} / ₀
XWF-015020-025	15 ^{+0.200} / _{+0.120}	20 ^{+0.100} / _{+0.050}	20 ^{+0.025} / ₀	15 ⁰ / _{-0.02}	15 ^{+0.200} / _{+0.020}	25 ^{+0.250} / ₀
XWF-015020-030	15 ^{+0.200} / _{+0.120}	20 ^{+0.100} / _{+0.050}	20 ^{+0.025} / ₀	15 ⁰ / _{-0.02}	15 ^{+0.200} / _{+0.020}	30 ^{+0.250} / ₀
XWF-020024-015	20 ^{+0.200} / _{+0.120}	24 ^{+0.100} / _{+0.050}	24 ^{+0.025} / ₀	20 ⁰ / _{-0.02}	20 ^{+0.200} / _{+0.020}	15 ^{+0.250} / _{-0.025}
XWF-020024-020	20 ^{+0.200} / _{+0.120}	24 ^{+0.100} / _{+0.050}	24 ^{+0.025} / ₀	20 ⁰ / _{-0.02}	20 ^{+0.200} / _{+0.020}	20 ^{+0.250} / _{-0.025}
XWF-020024-025	20 ^{+0.200} / _{+0.120}	24 ^{+0.100} / _{+0.050}	24 ^{+0.025} / ₀	20 ⁰ / _{-0.02}	20 ^{+0.200} / _{+0.020}	25 ^{+0.250} / _{-0.025}
XWF-020024-030	20 ^{+0.200} / _{+0.120}	24 ^{+0.100} / _{+0.050}	24 ^{+0.025} / ₀	20 ⁰ / _{-0.02}	20 ^{+0.200} / _{+0.020}	30 ^{+0.250} / _{-0.025}
XWF-020024-035	20 ^{+0.200} / _{+0.120}	24 ^{+0.100} / _{+0.050}	24 ^{+0.025} / ₀	20 ⁰ / _{-0.02}	20 ^{+0.200} / _{+0.020}	35 ^{+0.250} / _{-0.025}
XWF-025030-015	25 ^{+0.200} / _{+0.120}	30 ^{+0.100} / _{+0.050}	30 ^{+0.025} / ₀	25 ⁰ / _{-0.02}	25 ^{+0.200} / _{+0.020}	15 ^{+0.250} / ₀
XWF-025030-025	25 ^{+0.200} / _{+0.120}	30 ^{+0.100} / _{+0.050}	30 ^{+0.025} / ₀	25 ⁰ / _{-0.02}	25 ^{+0.200} / _{+0.020}	25 ^{+0.250} / ₀
XWF-025030-035	25 ^{+0.200} / _{+0.120}	30 ^{+0.100} / _{+0.050}	30 ^{+0.025} / ₀	25 ⁰ / _{-0.02}	25 ^{+0.200} / _{+0.020}	35 ^{+0.250} / ₀
XWF-025030-040	25 ^{+0.200} / _{+0.120}	30 ^{+0.100} / _{+0.050}	30 ^{+0.025} / ₀	25 ⁰ / _{-0.02}	25 ^{+0.200} / _{+0.020}	40 ^{+0.250} / ₀
XWF-025030-050	25 ^{+0.200} / _{+0.120}	30 ^{+0.100} / _{+0.050}	30 ^{+0.025} / ₀	25 ⁰ / _{-0.02}	25 ^{+0.200} / _{+0.020}	50 ^{+0.250} / ₀
XWF-030036-020	30 ^{+0.200} / _{+0.120}	36 ^{+0.100} / _{+0.050}	36 ^{+0.025} / ₀	30 ⁰ / _{-0.02}	30 ^{+0.200} / _{+0.020}	20 ^{+0.250} / ₀
XWF-030036-030	30 ^{+0.200} / _{+0.120}	36 ^{+0.100} / _{+0.050}	36 ^{+0.025} / ₀	30 ⁰ / _{-0.02}	30 ^{+0.200} / _{+0.020}	30 ^{+0.250} / ₀
XWF-030036-040	30 ^{+0.200} / _{+0.120}	36 ^{+0.100} / _{+0.050}	36 ^{+0.025} / ₀	30 ⁰ / _{-0.02}	30 ^{+0.200} / _{+0.020}	40 ^{+0.250} / ₀
XWF-030036-050	30 ^{+0.200} / _{+0.120}	36 ^{+0.100} / _{+0.050}	36 ^{+0.025} / ₀	30 ⁰ / _{-0.02}	30 ^{+0.200} / _{+0.020}	50 ^{+0.250} / ₀

轴承零件编号 Bearing part number	内径 D_i Inner diameter D_i	外径 D_o Outer diameter D_o	建议的轴承座孔 Recommended housing bore	建议的轴心尺寸 Recommended shaft size	运行间隙 Running clearance	长度公差 Length tolerance
XWF-030036-060	30 ^{+0.200} / _{+0.120}	36 ^{+0.100} / _{+0.050}	36 ^{+0.025} / ₀	30 ⁰ / _{-0.02}	30 ^{+0.200} / _{+0.020}	60 ^{+0.250} / ₀
XWF-035041-025	35 ^{+0.200} / _{+0.120}	41 ^{+0.100} / _{+0.050}	41 ^{+0.025} / ₀	35 ⁰ / _{-0.02}	35 ^{+0.200} / _{+0.020}	25 ^{+0.250} / ₀
XWF-035041-035	35 ^{+0.200} / _{+0.120}	41 ^{+0.100} / _{+0.050}	41 ^{+0.025} / ₀	35 ⁰ / _{-0.02}	35 ^{+0.200} / _{+0.020}	35 ^{+0.250} / ₀
XWF-035041-050	35 ^{+0.200} / _{+0.120}	41 ^{+0.100} / _{+0.050}	41 ^{+0.025} / ₀	35 ⁰ / _{-0.02}	35 ^{+0.200} / _{+0.020}	50 ^{+0.250} / ₀
XWF-035041-060	35 ^{+0.200} / _{+0.120}	41 ^{+0.100} / _{+0.050}	41 ^{+0.025} / ₀	35 ⁰ / _{-0.02}	35 ^{+0.200} / _{+0.020}	60 ^{+0.250} / ₀
XWF-035041-070	35 ^{+0.200} / _{+0.120}	41 ^{+0.100} / _{+0.050}	41 ^{+0.025} / ₀	35 ⁰ / _{-0.02}	35 ^{+0.200} / _{+0.020}	70 ^{+0.250} / ₀
XWF-040048-025	40 ^{+0.200} / _{+0.120}	48 ^{+0.100} / _{+0.050}	48 ^{+0.025} / ₀	40 ⁰ / _{-0.02}	40 ^{+0.200} / _{+0.020}	25 ^{+0.250} / ₀
XWF-040048-035	40 ^{+0.200} / _{+0.120}	48 ^{+0.100} / _{+0.050}	48 ^{+0.025} / ₀	40 ⁰ / _{-0.02}	40 ^{+0.200} / _{+0.020}	35 ^{+0.250} / ₀
XWF-040048-050	40 ^{+0.200} / _{+0.120}	48 ^{+0.100} / _{+0.050}	48 ^{+0.025} / ₀	40 ⁰ / _{-0.02}	40 ^{+0.200} / _{+0.020}	50 ^{+0.250} / ₀
XWF-040048-070	40 ^{+0.200} / _{+0.120}	48 ^{+0.100} / _{+0.050}	48 ^{+0.025} / ₀	40 ⁰ / _{-0.02}	40 ^{+0.200} / _{+0.020}	70 ^{+0.250} / ₀
XWF-040048-080	40 ^{+0.200} / _{+0.120}	48 ^{+0.105} / _{+0.055}	48 ^{+0.025} / ₀	40 ⁰ / _{-0.02}	40 ^{+0.200} / _{+0.020}	80 ^{+0.250} / ₀
XWF-045053-025	45 ^{+0.230} / _{+0.130}	53 ^{+0.105} / _{+0.055}	53 ^{+0.030} / ₀	45 ⁰ / _{-0.02}	45 ^{+0.230} / _{+0.025}	25 ^{+0.250} / ₀
XWF-045053-035	45 ^{+0.230} / _{+0.130}	53 ^{+0.105} / _{+0.055}	53 ^{+0.030} / ₀	45 ⁰ / _{-0.02}	45 ^{+0.230} / _{+0.025}	35 ^{+0.250} / ₀
XWF-045053-050	45 ^{+0.230} / _{+0.130}	53 ^{+0.105} / _{+0.055}	53 ^{+0.030} / ₀	45 ⁰ / _{-0.02}	45 ^{+0.230} / _{+0.025}	50 ^{+0.250} / ₀
XWF-045053-070	45 ^{+0.230} / _{+0.130}	53 ^{+0.105} / _{+0.055}	53 ^{+0.030} / ₀	45 ⁰ / _{-0.02}	45 ^{+0.230} / _{+0.025}	70 ^{+0.250} / ₀
XWF-045053-090	45 ^{+0.230} / _{+0.130}	53 ^{+0.105} / _{+0.055}	53 ^{+0.030} / ₀	45 ⁰ / _{-0.02}	45 ^{+0.230} / _{+0.025}	90 ^{+0.250} / ₀
XWF-050058-025	50 ^{+0.230} / _{+0.130}	58 ^{+0.105} / _{+0.055}	58 ^{+0.030} / ₀	50 ⁰ / _{-0.02}	50 ^{+0.230} / _{+0.025}	25 ^{+0.250} / ₀
XWF-050058-035	50 ^{+0.230} / _{+0.130}	58 ^{+0.105} / _{+0.055}	58 ^{+0.030} / ₀	50 ⁰ / _{-0.02}	50 ^{+0.230} / _{+0.025}	35 ^{+0.250} / ₀
XWF-050058-050	50 ^{+0.230} / _{+0.130}	58 ^{+0.105} / _{+0.055}	58 ^{+0.030} / ₀	50 ⁰ / _{-0.02}	50 ^{+0.230} / _{+0.025}	50 ^{+0.250} / ₀
XWF-050058-075	50 ^{+0.230} / _{+0.130}	58 ^{+0.105} / _{+0.055}	58 ^{+0.030} / ₀	50 ⁰ / _{-0.02}	50 ^{+0.230} / _{+0.025}	75 ^{+0.250} / ₀
XWF-050058-100	50 ^{+0.230} / _{+0.130}	58 ^{+0.120} / _{+0.070}	58 ^{+0.030} / ₀	50 ⁰ / _{-0.02}	50 ^{+0.230} / _{+0.025}	100 ^{+0.250} / ₀
XWF-055063-040	55 ^{+0.245} / _{+0.145}	63 ^{+0.120} / _{+0.070}	63 ^{+0.030} / ₀	55 ⁰ / _{-0.03}	55 ^{+0.235} / _{+0.025}	40 ^{+0.250} / ₀
XWF-055063-055	55 ^{+0.245} / _{+0.145}	63 ^{+0.120} / _{+0.070}	63 ^{+0.030} / ₀	55 ⁰ / _{-0.03}	55 ^{+0.235} / _{+0.025}	55 ^{+0.250} / ₀
XWF-055063-075	55 ^{+0.245} / _{+0.145}	63 ^{+0.120} / _{+0.070}	63 ^{+0.030} / ₀	55 ⁰ / _{-0.03}	55 ^{+0.235} / _{+0.025}	75 ^{+0.250} / ₀
XWF-055063-090	55 ^{+0.245} / _{+0.145}	63 ^{+0.120} / _{+0.070}	63 ^{+0.030} / ₀	55 ⁰ / _{-0.03}	55 ^{+0.235} / _{+0.025}	90 ^{+0.250} / ₀
XWF-055063-110	55 ^{+0.245} / _{+0.145}	63 ^{+0.120} / _{+0.070}	63 ^{+0.030} / ₀	55 ⁰ / _{-0.03}	55 ^{+0.235} / _{+0.025}	110 ^{+0.250} / ₀
XWF-060070-030	60 ^{+0.245} / _{+0.145}	70 ^{+0.120} / _{+0.070}	70 ^{+0.030} / ₀	60 ⁰ / _{-0.03}	60 ^{+0.235} / _{+0.025}	30 ^{+0.250} / ₀
XWF-060070-045	60 ^{+0.245} / _{+0.145}	70 ^{+0.120} / _{+0.070}	70 ^{+0.030} / ₀	60 ⁰ / _{-0.03}	60 ^{+0.235} / _{+0.025}	45 ^{+0.250} / ₀
XWF-060070-060	60 ^{+0.245} / _{+0.145}	70 ^{+0.120} / _{+0.070}	70 ^{+0.030} / ₀	60 ⁰ / _{-0.03}	60 ^{+0.235} / _{+0.025}	60 ^{+0.250} / ₀
XWF-060070-090	60 ^{+0.245} / _{+0.145}	70 ^{+0.120} / _{+0.070}	70 ^{+0.030} / ₀	60 ⁰ / _{-0.03}	60 ^{+0.235} / _{+0.025}	90 ^{+0.250} / ₀
XWF-060070-120	60 ^{+0.245} / _{+0.145}	70 ^{+0.120} / _{+0.070}	70 ^{+0.030} / ₀	60 ⁰ / _{-0.03}	60 ^{+0.235} / _{+0.025}	120 ^{+0.250} / ₀
XWF-065075-050	65 ^{+0.245} / _{+0.145}	75 ^{+0.120} / _{+0.070}	75 ^{+0.030} / ₀	65 ⁰ / _{-0.03}	65 ^{+0.235} / _{+0.025}	50 ^{+0.250} / ₀
XWF-065075-065	65 ^{+0.245} / _{+0.145}	75 ^{+0.120} / _{+0.070}	75 ^{+0.030} / ₀	65 ⁰ / _{-0.03}	65 ^{+0.235} / _{+0.025}	65 ^{+0.250} / ₀

轴承零件编号 Bearing part number	内径 D _i Inner diameter D _i	外径 D _o Outer diameter D _o	建议的轴承座孔 Recommended housing bore	建议的轴心尺寸 Recommended shaft size	运行间隙 Running clearance	长度公差 Length tolerance
XWF-065075-075	65 ^{+0.245} / _{+0.145}	75 ^{+0.120} / _{+0.070}	75 ^{+0.030} / ₀	65 ⁰ / _{-0.03}	65 ^{+0.235} / _{+0.025}	75 ^{+0.250} / ₀
XWF-065075-100	65 ^{+0.245} / _{+0.145}	75 ^{+0.120} / _{+0.070}	75 ^{+0.030} / ₀	65 ⁰ / _{-0.03}	65 ^{+0.235} / _{+0.025}	100 ^{+0.250} / ₀
XWF-065075-130	65 ^{+0.245} / _{+0.145}	75 ^{+0.120} / _{+0.070}	75 ^{+0.030} / ₀	65 ⁰ / _{-0.03}	65 ^{+0.235} / _{+0.025}	130 ^{+0.250} / ₀
XWF-070080-050	70 ^{+0.245} / _{+0.145}	80 ^{+0.120} / _{+0.070}	80 ^{+0.030} / ₀	70 ⁰ / _{-0.03}	70 ^{+0.235} / _{+0.025}	50 ^{+0.250} / ₀
XWF-070080-070	70 ^{+0.245} / _{+0.145}	80 ^{+0.120} / _{+0.070}	80 ^{+0.030} / ₀	70 ⁰ / _{-0.03}	70 ^{+0.235} / _{+0.025}	70 ^{+0.250} / ₀
XWF-070080-100	70 ^{+0.245} / _{+0.145}	80 ^{+0.120} / _{+0.070}	80 ^{+0.030} / ₀	70 ⁰ / _{-0.03}	70 ^{+0.235} / _{+0.025}	100 ^{+0.250} / ₀
XWF-070080-125	70 ^{+0.245} / _{+0.145}	80 ^{+0.120} / _{+0.070}	80 ^{+0.030} / ₀	70 ⁰ / _{-0.03}	70 ^{+0.235} / _{+0.025}	125 ^{+0.250} / ₀
XWF-070080-140	70 ^{+0.245} / _{+0.145}	80 ^{+0.120} / _{+0.070}	80 ^{+0.030} / ₀	70 ⁰ / _{-0.03}	70 ^{+0.235} / _{+0.025}	140 ^{+0.250} / ₀
XWF-075085-050	75 ^{+0.275} / _{+0.175}	85 ^{+0.125} / _{+0.075}	85 ^{+0.035} / ₀	75 ⁰ / _{-0.03}	75 ^{+0.265} / _{+0.050}	50 ^{+0.250} / ₀
XWF-075085-075	75 ^{+0.275} / _{+0.175}	85 ^{+0.125} / _{+0.075}	85 ^{+0.035} / ₀	75 ⁰ / _{-0.03}	75 ^{+0.265} / _{+0.050}	75 ^{+0.250} / ₀
XWF-075085-100	75 ^{+0.275} / _{+0.175}	85 ^{+0.125} / _{+0.075}	85 ^{+0.035} / ₀	75 ⁰ / _{-0.03}	75 ^{+0.265} / _{+0.050}	100 ^{+0.250} / ₀
XWF-075085-125	75 ^{+0.275} / _{+0.175}	85 ^{+0.125} / _{+0.075}	85 ^{+0.035} / ₀	75 ⁰ / _{-0.03}	75 ^{+0.265} / _{+0.050}	125 ^{+0.250} / ₀
XWF-075085-150	75 ^{+0.275} / _{+0.175}	85 ^{+0.125} / _{+0.075}	85 ^{+0.035} / ₀	75 ⁰ / _{-0.03}	75 ^{+0.265} / _{+0.050}	150 ^{+0.250} / ₀
XWF-080090-050	80 ^{+0.275} / _{+0.175}	90 ^{+0.125} / _{+0.075}	90 ^{+0.035} / ₀	80 ⁰ / _{-0.03}	80 ^{+0.265} / _{+0.050}	50 ^{+0.250} / ₀
XWF-080090-075	80 ^{+0.275} / _{+0.175}	90 ^{+0.125} / _{+0.075}	90 ^{+0.035} / ₀	80 ⁰ / _{-0.03}	80 ^{+0.265} / _{+0.050}	75 ^{+0.250} / ₀
XWF-080090-100	80 ^{+0.275} / _{+0.175}	90 ^{+0.125} / _{+0.075}	90 ^{+0.035} / ₀	80 ⁰ / _{-0.03}	80 ^{+0.265} / _{+0.050}	100 ^{+0.250} / ₀
XWF-080090-125	80 ^{+0.275} / _{+0.175}	90 ^{+0.125} / _{+0.075}	90 ^{+0.035} / ₀	80 ⁰ / _{-0.03}	80 ^{+0.265} / _{+0.050}	125 ^{+0.250} / ₀
XWF-080090-150	80 ^{+0.275} / _{+0.175}	90 ^{+0.125} / _{+0.075}	90 ^{+0.035} / ₀	80 ⁰ / _{-0.03}	80 ^{+0.265} / _{+0.050}	150 ^{+0.250} / ₀
XWF-085095-050	85 ^{+0.275} / _{+0.175}	95 ^{+0.125} / _{+0.075}	95 ^{+0.035} / ₀	85 ⁰ / _{-0.03}	85 ^{+0.265} / _{+0.050}	50 ^{+0.250} / ₀
XWF-085095-085	85 ^{+0.275} / _{+0.175}	95 ^{+0.125} / _{+0.075}	95 ^{+0.035} / ₀	85 ⁰ / _{-0.03}	85 ^{+0.265} / _{+0.050}	85 ^{+0.250} / ₀
XWF-085095-100	85 ^{+0.275} / _{+0.175}	95 ^{+0.125} / _{+0.075}	95 ^{+0.035} / ₀	85 ⁰ / _{-0.03}	85 ^{+0.265} / _{+0.050}	100 ^{+0.250} / ₀
XWF-085095-125	85 ^{+0.275} / _{+0.175}	95 ^{+0.125} / _{+0.075}	95 ^{+0.035} / ₀	85 ⁰ / _{-0.03}	85 ^{+0.265} / _{+0.050}	125 ^{+0.250} / ₀
XWF-085095-150	85 ^{+0.275} / _{+0.175}	95 ^{+0.125} / _{+0.075}	95 ^{+0.035} / ₀	85 ⁰ / _{-0.03}	85 ^{+0.265} / _{+0.050}	150 ^{+0.250} / ₀
XWF-090105-050	90 ^{+0.275} / _{+0.175}	105 ^{+0.125} / _{+0.075}	105 ^{+0.035} / ₀	90 ⁰ / _{-0.035}	90 ^{+0.270} / _{+0.050}	50 ^{+0.250} / ₀
XWF-090105-090	90 ^{+0.275} / _{+0.175}	105 ^{+0.125} / _{+0.075}	105 ^{+0.035} / ₀	90 ⁰ / _{-0.035}	90 ^{+0.270} / _{+0.050}	90 ^{+0.250} / ₀
XWF-090105-125	90 ^{+0.275} / _{+0.175}	105 ^{+0.125} / _{+0.075}	105 ^{+0.035} / ₀	90 ⁰ / _{-0.035}	90 ^{+0.270} / _{+0.050}	125 ^{+0.250} / ₀
XWF-090105-150	90 ^{+0.275} / _{+0.175}	105 ^{+0.125} / _{+0.075}	105 ^{+0.035} / ₀	90 ⁰ / _{-0.035}	90 ^{+0.270} / _{+0.050}	150 ^{+0.250} / ₀
XWF-090105-180	90 ^{+0.275} / _{+0.175}	105 ^{+0.125} / _{+0.075}	105 ^{+0.035} / ₀	90 ⁰ / _{-0.035}	90 ^{+0.270} / _{+0.050}	180 ^{+0.250} / ₀
XWF-095110-050	95 ^{+0.310} / _{+0.185}	110 ^{+0.135} / _{+0.085}	110 ^{+0.035} / ₀	95 ⁰ / _{-0.035}	95 ^{+0.295} / _{+0.050}	50 ^{+0.250} / ₀
XWF-095110-100	95 ^{+0.310} / _{+0.185}	110 ^{+0.135} / _{+0.085}	110 ^{+0.035} / ₀	95 ⁰ / _{-0.035}	95 ^{+0.295} / _{+0.050}	100 ^{+0.250} / ₀
XWF-095110-125	95 ^{+0.310} / _{+0.185}	110 ^{+0.135} / _{+0.085}	110 ^{+0.035} / ₀	95 ⁰ / _{-0.035}	95 ^{+0.295} / _{+0.050}	125 ^{+0.250} / ₀
XWF-095110-150	95 ^{+0.310} / _{+0.185}	110 ^{+0.135} / _{+0.085}	110 ^{+0.035} / ₀	95 ⁰ / _{-0.035}	95 ^{+0.295} / _{+0.050}	150 ^{+0.250} / ₀
XWF-095110-175	95 ^{+0.310} / _{+0.185}	110 ^{+0.135} / _{+0.085}	110 ^{+0.035} / ₀	95 ⁰ / _{-0.035}	95 ^{+0.295} / _{+0.050}	175 ^{+0.250} / ₀

轴承零件编号 Bearing part number	内径 D_i Inner diameter D_i	外径 D_o Outer diameter D_o	建议的轴承座孔 Recommended housing bore	建议的轴心尺寸 Recommended shaft size	运行间隙 Running clearance	长度公差 Length tolerance
XWF-100115-075	100 ^{+0.310} _{+0.185}	115 ^{+0.135} _{+0.085}	115 ^{+0.035} ₀	100 ⁰ _{-0.035}	100 ^{+0.295} _{+0.050}	750 ^{+0.250} ₀
XWF-100115-100	100 ^{+0.310} _{+0.185}	115 ^{+0.135} _{+0.085}	115 ^{+0.035} ₀	100 ⁰ _{-0.035}	100 ^{+0.295} _{+0.050}	100 ^{+0.250} ₀
XWF-100115-125	100 ^{+0.310} _{+0.185}	115 ^{+0.135} _{+0.085}	115 ^{+0.035} ₀	100 ⁰ _{-0.035}	100 ^{+0.295} _{+0.050}	125 ^{+0.250} ₀
XWF-100115-150	100 ^{+0.310} _{+0.185}	115 ^{+0.135} _{+0.085}	115 ^{+0.035} ₀	100 ⁰ _{-0.035}	100 ^{+0.295} _{+0.050}	150 ^{+0.250} ₀
XWF-100115-175	100 ^{+0.310} _{+0.185}	115 ^{+0.135} _{+0.085}	115 ^{+0.035} ₀	100 ⁰ _{-0.035}	100 ^{+0.295} _{+0.050}	175 ^{+0.250} ₀
XWF-110125-075	110 ^{+0.310} _{+0.185}	125 ^{+0.135} _{+0.085}	125 ^{+0.035} ₀	110 ⁰ _{-0.035}	110 ^{+0.295} _{+0.050}	75 ^{+0.250} ₀
XWF-110125-100	110 ^{+0.310} _{+0.185}	125 ^{+0.135} _{+0.085}	125 ^{+0.035} ₀	110 ⁰ _{-0.035}	110 ^{+0.295} _{+0.050}	100 ^{+0.250} ₀
XWF-110125-125	110 ^{+0.310} _{+0.185}	125 ^{+0.135} _{+0.085}	125 ^{+0.035} ₀	110 ⁰ _{-0.035}	110 ^{+0.295} _{+0.050}	125 ^{+0.250} ₀
XWF-110125-150	110 ^{+0.310} _{+0.185}	125 ^{+0.135} _{+0.085}	125 ^{+0.035} ₀	110 ⁰ _{-0.035}	110 ^{+0.295} _{+0.050}	150 ^{+0.250} ₀
XWF-110125-175	110 ^{+0.310} _{+0.185}	125 ^{+0.135} _{+0.085}	125 ^{+0.035} ₀	110 ⁰ _{-0.035}	110 ^{+0.295} _{+0.050}	175 ^{+0.250} ₀
XWF-120135-075	120 ^{+0.340} _{+0.215}	135 ^{+0.140} _{+0.090}	135 ^{+0.040} ₀	120 ⁰ _{-0.035}	120 ^{+0.325} _{+0.050}	75 ^{+0.250} ₀
XWF-120135-100	120 ^{+0.340} _{+0.215}	135 ^{+0.140} _{+0.090}	135 ^{+0.040} ₀	120 ⁰ _{-0.035}	120 ^{+0.325} _{+0.050}	100 ^{+0.250} ₀
XWF-120135-125	120 ^{+0.340} _{+0.215}	135 ^{+0.140} _{+0.090}	135 ^{+0.040} ₀	120 ⁰ _{-0.035}	120 ^{+0.325} _{+0.050}	125 ^{+0.250} ₀
XWF-120135-150	120 ^{+0.340} _{+0.215}	135 ^{+0.140} _{+0.090}	135 ^{+0.040} ₀	120 ⁰ _{-0.035}	120 ^{+0.325} _{+0.050}	150 ^{+0.250} ₀
XWF-120135-175	120 ^{+0.340} _{+0.215}	135 ^{+0.140} _{+0.090}	135 ^{+0.040} ₀	120 ⁰ _{-0.035}	120 ^{+0.325} _{+0.050}	175 ^{+0.250} ₀
XWF-130145-075	130 ^{+0.340} _{+0.215}	145 ^{+0.140} _{+0.090}	145 ^{+0.040} ₀	130 ⁰ _{-0.035}	130 ^{+0.325} _{+0.050}	75 ^{+0.250} ₀
XWF-130145-125	130 ^{+0.340} _{+0.215}	145 ^{+0.140} _{+0.090}	145 ^{+0.040} ₀	130 ⁰ _{-0.035}	130 ^{+0.325} _{+0.050}	125 ^{+0.250} ₀
XWF-130145-150	130 ^{+0.340} _{+0.215}	145 ^{+0.140} _{+0.090}	145 ^{+0.040} ₀	130 ⁰ _{-0.035}	130 ^{+0.325} _{+0.050}	150 ^{+0.250} ₀
XWF-130145-175	130 ^{+0.340} _{+0.215}	145 ^{+0.140} _{+0.090}	145 ^{+0.040} ₀	130 ⁰ _{-0.035}	130 ^{+0.325} _{+0.050}	175 ^{+0.250} ₀
XWF-130145-200	130 ^{+0.340} _{+0.215}	145 ^{+0.140} _{+0.090}	145 ^{+0.040} ₀	130 ⁰ _{-0.035}	130 ^{+0.325} _{+0.050}	200 ^{+0.250} ₀
XWF-140155-075	140 ^{+0.340} _{+0.215}	155 ^{+0.140} _{+0.090}	155 ^{+0.040} ₀	140 ⁰ _{-0.035}	140 ^{+0.325} _{+0.050}	75 ^{+0.250} ₀
XWF-140155-125	140 ^{+0.340} _{+0.215}	155 ^{+0.140} _{+0.090}	155 ^{+0.040} ₀	140 ⁰ _{-0.035}	140 ^{+0.325} _{+0.050}	125 ^{+0.250} ₀
XWF-140155-150	140 ^{+0.340} _{+0.215}	155 ^{+0.140} _{+0.090}	155 ^{+0.040} ₀	140 ⁰ _{-0.035}	140 ^{+0.325} _{+0.050}	150 ^{+0.250} ₀
XWF-140155-175	140 ^{+0.340} _{+0.215}	155 ^{+0.140} _{+0.090}	155 ^{+0.040} ₀	140 ⁰ _{-0.035}	140 ^{+0.325} _{+0.050}	175 ^{+0.250} ₀
XWF-140155-200	140 ^{+0.340} _{+0.215}	155 ^{+0.140} _{+0.090}	155 ^{+0.040} ₀	140 ⁰ _{-0.035}	140 ^{+0.325} _{+0.050}	200 ^{+0.250} ₀
XWF-150165-075	150 ^{+0.340} _{+0.215}	165 ^{+0.140} _{+0.090}	165 ^{+0.040} ₀	150 ⁰ _{-0.035}	150 ^{+0.325} _{+0.050}	75 ^{+0.250} ₀
XWF-150165-125	150 ^{+0.340} _{+0.215}	165 ^{+0.140} _{+0.090}	165 ^{+0.040} ₀	150 ⁰ _{-0.035}	150 ^{+0.325} _{+0.050}	125 ^{+0.250} ₀
XWF-150165-150	150 ^{+0.340} _{+0.215}	165 ^{+0.140} _{+0.090}	165 ^{+0.040} ₀	150 ⁰ _{-0.035}	150 ^{+0.325} _{+0.050}	150 ^{+0.250} ₀
XWF-150165-200	150 ^{+0.340} _{+0.215}	165 ^{+0.140} _{+0.090}	165 ^{+0.040} ₀	150 ⁰ _{-0.035}	150 ^{+0.325} _{+0.050}	200 ^{+0.250} ₀
XWF-150165-250	150 ^{+0.340} _{+0.215}	165 ^{+0.140} _{+0.090}	165 ^{+0.040} ₀	150 ⁰ _{-0.035}	150 ^{+0.325} _{+0.050}	250 ^{+0.250} ₀