

## GB0 杆端关节轴承，外螺纹

### GB0 Rod End Bearings, Male Thread

#### 产品特性 Product Features

- 球体采用高耐磨材料HPP28制成
  - 连接器采用高强度和尺寸稳定性材料M163制成
  - 自润滑、免维护
  - 光面设计耐灰尘
  - 很好的耐腐蚀性能
  - 补偿心中误差
  - 无噪音、重量轻
- Spherical ball made of highly wear-resistant HPP28
  - Connection rod made of high strength and shape-stable M163
  - Maintenance free dry operation
  - Smooth design has no dirt traps
  - Absolute corrosion resistance
  - Compensation of misalignment errors
  - No noise and light weight



#### 订购编码 Order PN

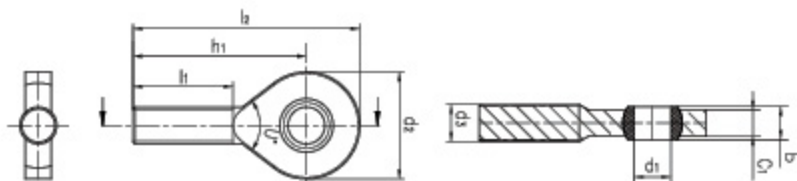
订购编码 Order PN:

GBOR-06

内径 Inner diameter

R: 右旋 Right

L: 左旋 Left



订购编码 Order PN	d <sub>1</sub> [mm]	d <sub>2</sub> [mm]	d <sub>3</sub> [mm]	B [mm]	l <sub>1</sub> [mm]	l <sub>2</sub> [mm]	h <sub>1</sub> [mm]	C <sub>1</sub> [mm]	最大静态抗拉强度 Max. static tensile strength		最大径向静态负荷 Max. axial static load		最小螺纹深度 Min. tread depth	球体最大扭矩 Max. tightening torque through ball	重量 Weight [g]
									短期 Sort-term [N]	长期 Long-term [N]	短期 Sort-term [N]	长期 Long-term [N]			
GBOR-06	6	21	M6	6	20	46.5	36	4.4	850	425	800	40	14	0.5	2.7
GBOR-08	8	24	M8	8	24	53	41	6	1600	800	160	80	17	2	5.1
GBOR-10	10	29	M10	9	27	62	47.5	7	2600	1300	250	125	19	5	8.4
GBOL-06	6	21	M6	6	20	46.5	36	4.4	850	425	80	40	14	0.5	2.7
GBOL-08	8	24	M8	8	24	53	41	6	1600	800	160	80	17	2	5.1
GBOL-10	10	29	M10	9	27	62	47.5	7	2600	1300	250	125	19	5	8.4